

# WOODLAND VILLAGE 6TH ADDITION

CITY OF BLAINE  
COUNTY OF ANOKA  
SEC. 12, T. 31, R. 23

KNOW ALL PERSONS BY THESE PRESENTS: That Village Bank, a Minnesota corporation, owner, and Woodland Development Corporation, a Minnesota corporation, contract purchaser of the following described property:

Outlot B, WOODLAND VILLAGE, Anoka County, Minnesota.

Have caused the same to be surveyed and platted as WOODLAND VILLAGE 6TH ADDITION and do hereby dedicate to the public for public use the drainage and utility easements as shown on this plat.

In witness whereof said Village Bank, a Minnesota corporation, has caused these presents to be signed by its proper officer this 5 day of SEPTEMBER, 2014.

VILLAGE BANK  
Randy L. Diers  
Randy L. Diers, President

STATE OF MINNESOTA  
COUNTY OF Anoka  
This instrument was acknowledged before me this 5th day of Sept, 2014 by Randy L. Diers, President of Village Bank, a Minnesota corporation, on behalf of the corporation.

In witness whereof said Woodland Development Corporation, a Minnesota corporation, has caused these presents to be signed by its proper officer this 5th day of SEPTEMBER, 2014.

WOODLAND DEVELOPMENT CORPORATION  
Byron D. Westlund  
Byron D. Westlund, President

STATE OF MINNESOTA  
COUNTY OF ANOKA  
This instrument was acknowledged before me this 5th day of SEPTEMBER, 2014 by Byron D. Westlund, as President of Woodland Development Corporation, a Minnesota corporation, on behalf of the corporation.

Debra J. Marohn  
DEBRA J. MAROHN  
Notary Public, Minnesota  
My commission expires 1-31-2015

STATE OF MINNESOTA  
COUNTY OF ANOKA  
This instrument was acknowledged before me this 5th day of September, 2014 by Charles R. Christopherson.  
Seth M. Monroe  
Seth M. Monroe  
Notary Public, Minnesota  
My commission expires January 31, 2019

City Council, City of Blaine, Minnesota  
This plat of WOODLAND VILLAGE 6TH ADDITION was approved and accepted by the City Council of the City of Blaine, Minnesota at a regular meeting thereof held this 20th day of February, 2014, and said plat is in compliance with the provisions of Minnesota Statutes, Section 505.03, Subd. 2.

City Council, City of Blaine, Minnesota  
By: Tom Ryan, Mayor By: Charles F. Letzner, Clerk

ANOKA COUNTY SURVEYOR  
I hereby certify that in accordance with Minnesota Statutes, Section 505.021, Subd. 11, this plat has been reviewed and approved this 10th day of September, 2014.  
Larry D. Holm by Charles F. Letzner  
Larry D. Holm, Anoka County Surveyor Deputy

I, Charles R. Christopherson do hereby certify that this plat was prepared by me or under my direct supervision; that I am a duly Licensed Land Surveyor in the State of Minnesota; that this plat is a correct representation of the boundary survey; that all mathematical data and labels are correctly designated on this plat; that all monuments depicted on this plat have been, or will be correctly set within one year; that all water boundaries and wet lands, as defined in Minnesota Statutes, Section 505.01, Subd. 3, as of the date of this certificate are shown and labeled on this plat; and all public ways are shown and labeled on this plat.  
Dated this 5th day of September, 2014.

Charles R. Christopherson  
Charles R. Christopherson, Licensed Land Surveyor  
Minnesota License No. 18420

Dorlene A. Jones  
Dorlene A. Jones  
Notary Public, Minnesota  
My commission expires 6/31/15  
585569.001

Office of RECORDER/REGISTRAR

### OF TITLES

STATE OF MINNESOTA COUNTY OF ANOKA

I hereby certify that the within instrument was filed

this office for record on the 10 day of

Sept, 2014 at 10:17 AM

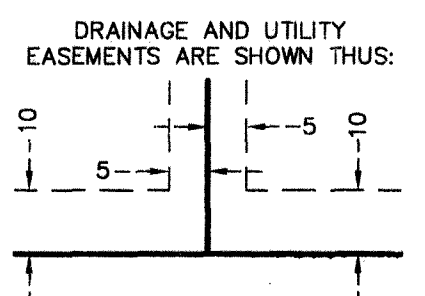
and was duly recorded in book 22

of page 60

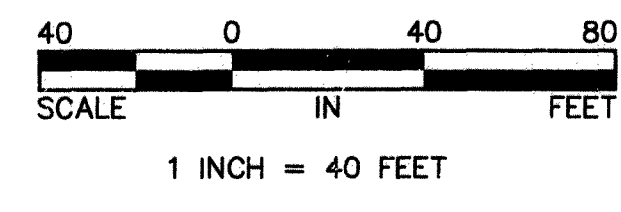
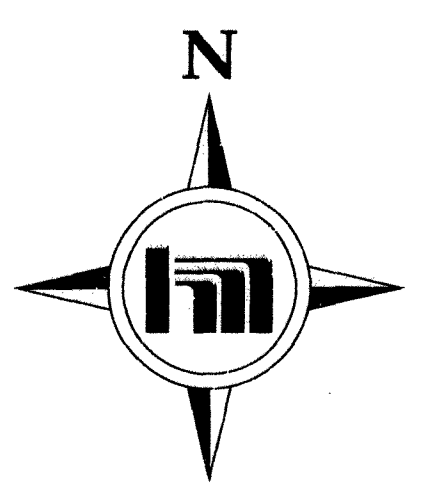
of the Office of Recorder/Registrar of Anoka County, Minnesota.

Jonell M. Sawyer  
Jonell M. Sawyer  
Recorder/Registrar of Anoka County, Minnesota

Schultz  
Schultz  
Deputy



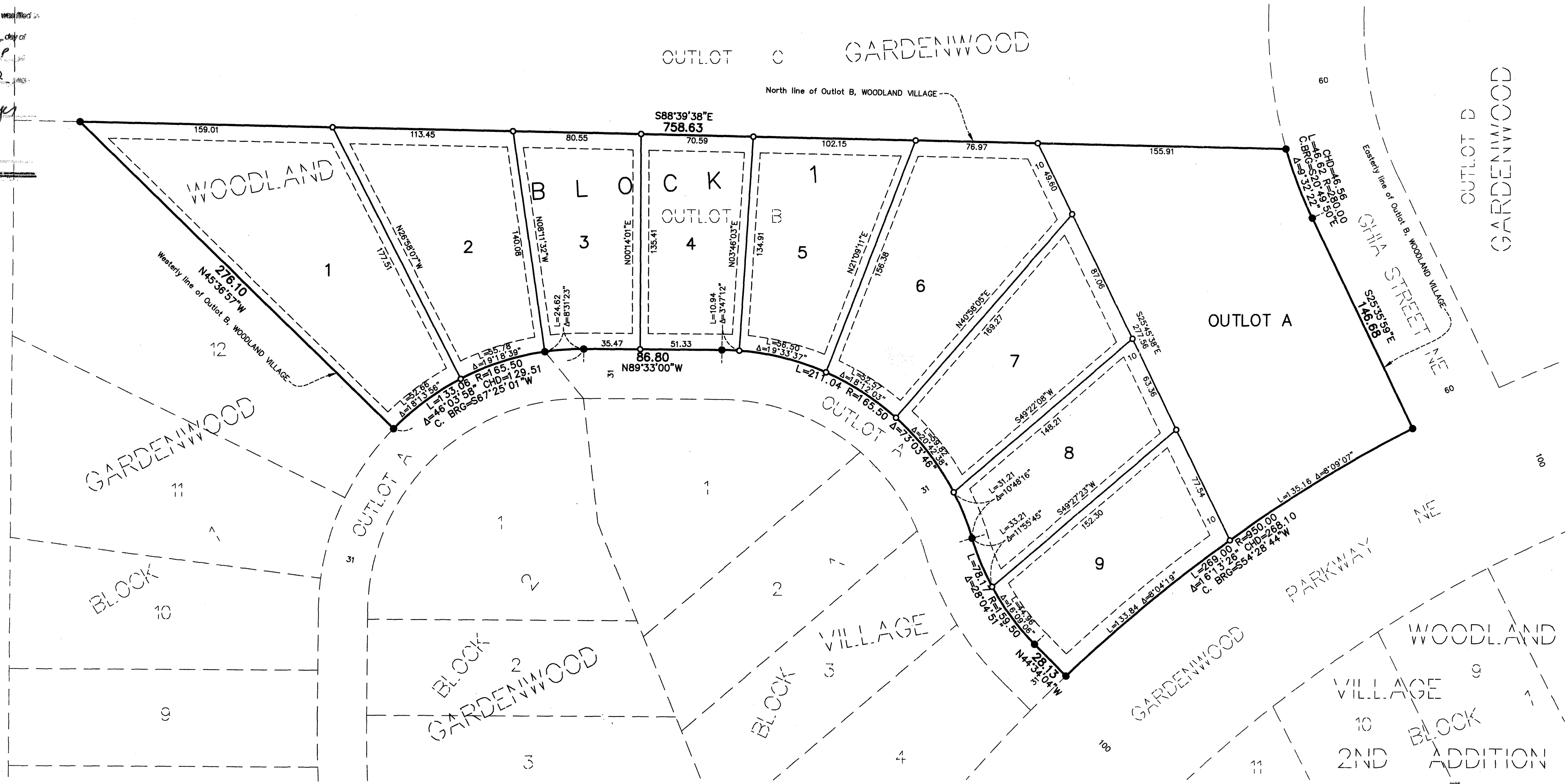
(NOT TO SCALE)  
Being 5.00 feet in width and adjoining side lot lines unless otherwise shown on this plat and being 10.00 feet in width and adjoining right of way lines and rear lot lines unless otherwise shown on this plat.



For the purposes of this plat the North line of Outlot B, WOODLAND VILLAGE is assumed to bear S88°39'38"E.

- Denotes 1/2 inch by 14 inch iron monument set and marked with Minnesota License No. 18420.
- Denotes found iron monument

I HEREBY CERTIFY THAT THE CURRENT AND DELINQUENT TAXES ON THE LANDS DESCRIBED WITHIN ARE PAID AND THE TRANSFER IS ENTERED  
Jonell M. Sawyer  
PROFESSIONAL ADMINISTRATOR  
Schultz  
DEPUTY PROPERTY TAX ADMINISTRATOR



\$56.00