

WOODLAND VILLAGE 7TH ADDITION

BOOK 22 OF TORN PAGE 7

CITY OF BLAINE
COUNTY OF ANOKA
SEC. 12, TWP. 31, RNG. 23

KNOW ALL PERSONS BY THESE PRESENTS: That Village Bank, a Minnesota corporation, owner, and Woodland Development Corporation, a Minnesota corporation, contract purchaser of the following described property:

Outlot C, GARDENWOOD, Anoka County, Minnesota

and

Outlot A, WOODLAND VILLAGE 6TH ADDITION, Anoka County, Minnesota

Have caused the same to be surveyed and platted as WOODLAND VILLAGE 7TH ADDITION and do hereby dedicate to the public for public use the drainage and utility easements as shown on this plat.

In witness whereof said Village Bank, a Minnesota corporation, has caused these presents to be signed by its proper officer this 5 day of SEPTEMBER, 2014.

VILLAGE BANK

Randy L. Diers
Randy L. Diers, President

STATE OF Minnesota
COUNTY OF Anoka

This instrument was acknowledged before me on September 5, 2014 by Randy L. Diers, President of Village Bank, a Minnesota corporation, on behalf of the corporation.

Dorlene A. Jones
Notary Public, Anoka County, Minnesota
My commission expires 1/31/15

In witness whereof said Woodland Development Corporation, a Minnesota corporation, has caused these presents to be signed by its proper officer this 28th day of AUGUST, 2014.

WOODLAND DEVELOPMENT CORPORATION

Byron D. Westlund
Byron D. Westlund, President

STATE OF MINNESOTA
COUNTY OF ANOKA

This instrument was acknowledged before me on AUGUST 28, 2014 by Byron D. Westlund, President of Woodland Development Corporation, a Minnesota corporation, on behalf of the corporation.

Debra J. Marohn
DEBRA J. MAROHN
Notary Public, ANOKA COUNTY, MINNESOTA
My commission expires 1-31-2015

I, Thomas R. Balluff do hereby certify that this plat was prepared by me or under my direct supervision; that I am a duly Licensed Land Surveyor in the State of Minnesota; that this plat is a correct representation of the boundary survey; that all mathematical data and labels are correctly designated on this plat; that all monuments depicted on this plat have been, or will be correctly set within one year; that all water boundaries and wet lands, as defined in Minnesota Statutes, Section 505.01, Subd. 3, as of the date of this certificate are shown and labeled on this plat; and all public ways are shown and labeled on this plat.

Dated this 27th day of AUGUST, 2014.

Thomas R. Balluff
Thomas R. Balluff, Licensed Land Surveyor
Minnesota License No. 40361

STATE OF Minnesota
COUNTY OF Anoka

This instrument was acknowledged before me on August 27th, 2014 by Thomas R. Balluff.

Cynthia J. Morical
Cynthia J. Morical
Notary Public, Hennepin County, Minnesota
My commission expires January 31, 2015

CITY COUNCIL, CITY OF BLAINE, MINNESOTA

This plat of WOODLAND VILLAGE 7TH ADDITION was approved and accepted by the City Council of the City of Blaine, Minnesota at a regular meeting thereof held this 21st day of August, 2014 and said plat is in compliance with the provisions of Minnesota Statutes, Section 505.03, Subd. 2.

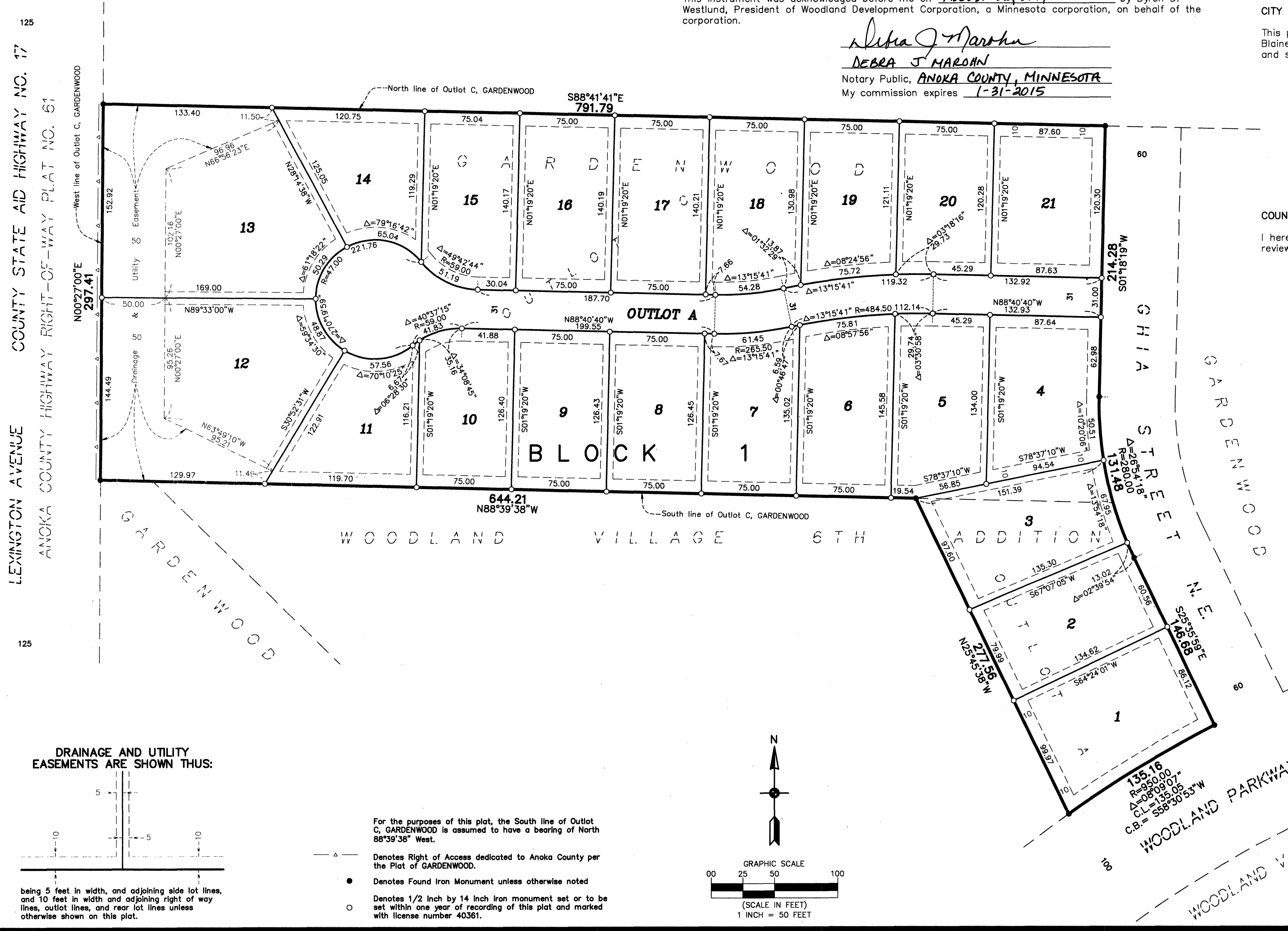
CITY COUNCIL, CITY OF BLAINE, MINNESOTA

By: Tom Ryan, Mayor
By: Colleen Jensen, Clerk

COUNTY SURVEYOR

I hereby certify that in accordance with Minnesota Statutes, Section 505.021, Subd. 11, this plat has been reviewed and approved this 10th day of September, 2014.

By: Larry D. Holm by Charles F. Setzer, Deputy
Larry D. Holm
Anoka County Surveyor



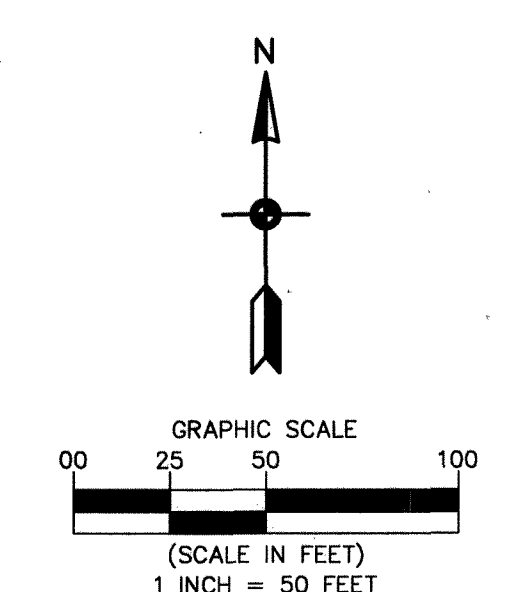
DRAINAGE AND UTILITY EASEMENTS ARE SHOWN THUS:

— 5 — 10 — 5 — 10 —

being 5 feet in width, and adjoining side lot lines, and 10 feet in width and adjoining right of way lines, outlot lines, and rear lot lines unless otherwise shown on this plat.

For the purposes of this plat, the South line of Outlot C, GARDENWOOD is assumed to have a bearing of North 88°39'38" West.

- denotes Right of Access dedicated to Anoka County per the Plat of GARDENWOOD.
- denotes Found Iron Monument unless otherwise noted
- denotes 1/2 inch by 14 inch iron monument set or to be set within one year of recording of this plat and marked with license number 40361.



525596.003
Office of RECORDER/REGISTRAR OF TITLES
STATE OF MINNESOTA COUNTY OF ANOKA
I hereby certify that the within instrument was filed in this office for record on the 11 day of Sept 2014 at 2:22 o'clock P.M. and was duly recorded in book 22 page 7
Jonelle M. Hawyer
Recorder/Registrar of Titles
By: Shirley Deputy

I HEREBY CERTIFY THAT THE CURRENT AND DELINQUENT TAXES ON THE LANDS DESCRIBED WITHIN ARE PAID AND THE TRANSFER IS ENTERED 9/11/14
Jonelle M. Hawyer
PROPERTY TAX ADMINISTRATOR
By: Shirley DEPUTY PROPERTY TAX ADMINISTRATOR

Carlson McCain
ENVIRONMENTAL · ENGINEERING · SURVEYING

\$56.00