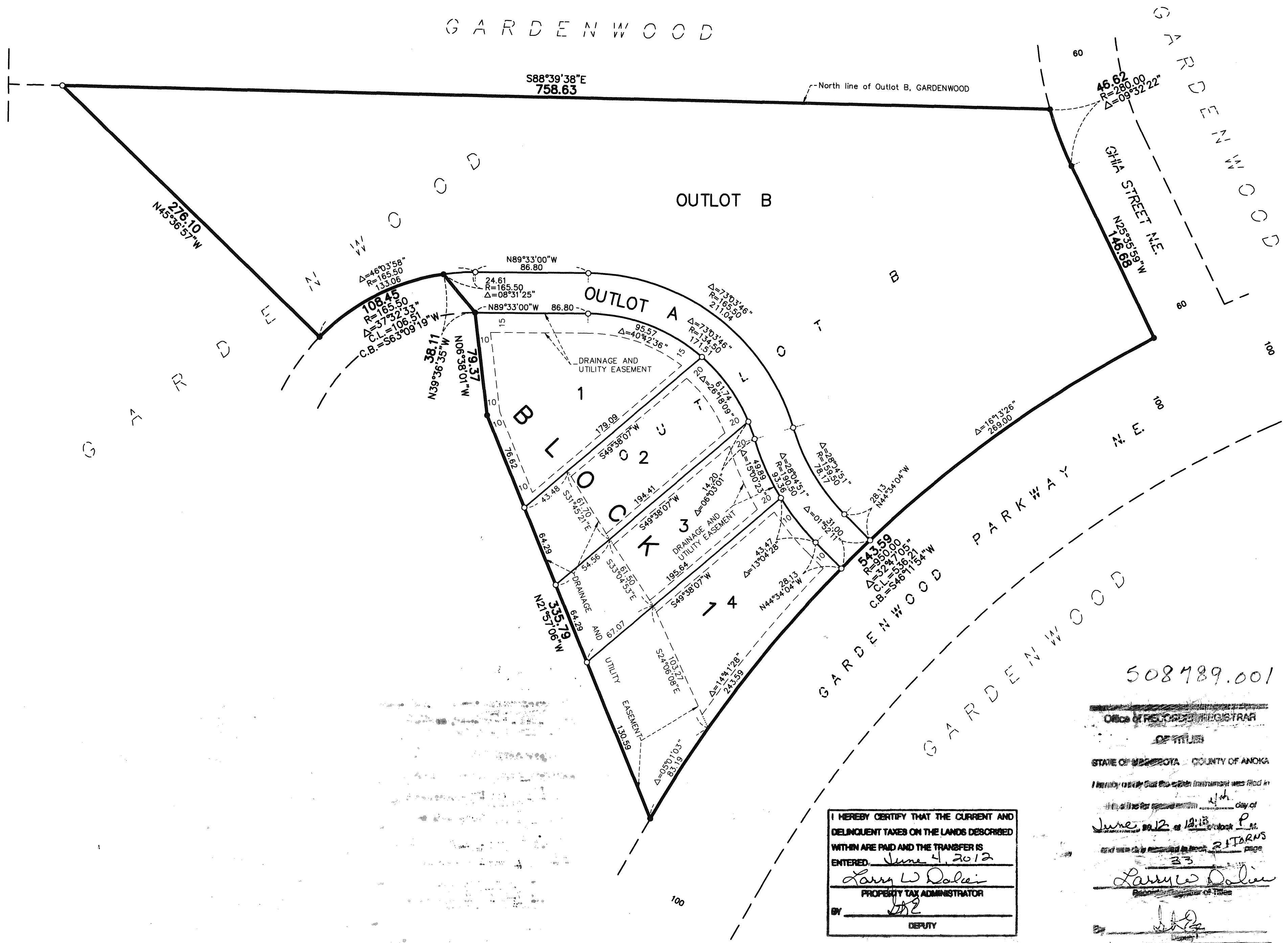


WOODLAND VILLAGE

Book 21 TOWNS Pg 33

CITY OF BLAINE
COUNTY OF ANOKA
Sec. 12, Twp. 31, Rge. 23



KNOW ALL PERSONS BY THESE PRESENTS: That Village Bank, a Minnesota corporation, owner, and Woodland Development Corporation, a Minnesota corporation, contract purchaser, of the following described property:

OUTLOT B, GARDENWOOD, Anoka County, Minnesota.

Have caused the same to be surveyed and platted as WOODLAND VILLAGE and do hereby dedicate to the public for public use the drainage and utility easements as shown on this plat.

In witness whereof said Village Bank, a Minnesota corporation, has caused these presents to be signed by its proper officer this 10 day of May, 2012.

VILLAGE BANK

Thomas R. Schaffhausen
Thomas R. Schaffhausen, Chief Credit Officer

STATE OF MINNESOTA
COUNTY OF Anoka

This instrument was acknowledged before me on May 10, 2012 by Thomas R. Schaffhausen, Chief Credit Officer of Village Bank, a Minnesota corporation, on behalf of the corporation.

Darlene A. Jones
Darlene A. Jones
Notary Public, Anoka County Minnesota
My commission expires 1/31/13

In witness whereof said Woodland Development Corporation, a Minnesota corporation, has caused these presents to be signed by its proper officer this 9th day of May, 2012.

WOODLAND DEVELOPMENT CORPORATION

Byron D. Westlund
Byron D. Westlund, President

STATE OF MINNESOTA
COUNTY OF Anoka

This instrument was acknowledged before me on MAY 9, 2012 by Byron D. Westlund, President of Woodland Development Corporation, a Minnesota corporation, on behalf of the corporation.

Debra J. March
DEBRA J. MARCH
Notary Public, ANOKA COUNTY MINNESOTA
My commission expires 1-31-2015

I, Thomas R. Balluff do hereby certify that this plat was prepared by me or under my direct supervision; that I am a duly Licensed Land Surveyor in the State of Minnesota; that this plat is a correct representation of the boundary survey; that all mathematical data and labels are correctly designated on this plat; that all monuments depicted on this plat have been, or will be correctly set within one year; that all water boundaries and wet lands, as defined in Minnesota Statutes, Section 505.01, Subd. 3, as of the date of this certificate are shown and labeled on this plat; and all public ways are shown and labeled on this plat.

Dated this 8th day of MAY, 2012.

Thomas R. Balluff
Thomas R. Balluff, Licensed Land Surveyor
Minnesota License No. 40361

STATE OF MINNESOTA
COUNTY OF Anoka

This instrument was acknowledged before me on May 8, 2012 by Thomas R. Balluff.

Kelly H. Street
KELLY H. STREET
Notary Public, Anoka County Minnesota
My commission expires 1-31-2014

CITY COUNCIL, CITY OF BLAINE, MINNESOTA

This plat of WOODLAND VILLAGE was approved and accepted by the City Council of the City of Blaine, Minnesota at a regular meeting thereof held this 5th day of April, 2012 and said plat is in compliance with the provisions of Minnesota Statutes, Section 505.03, Subd. 2.

CITY COUNCIL, CITY OF BLAINE, MINNESOTA

By *Tom Ryan* Mayor
By *John Cross* Clerk

COUNTY SURVEYOR

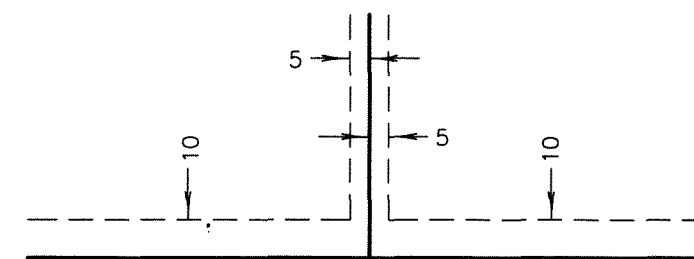
I hereby certify that in accordance with Minnesota Statutes, Section 505.021, Subd. 11, this plat has been reviewed and approved this 10th day of JUNE, 2012.

By *Larry D. Holm*
Larry D. Holm
Anoka County Surveyor

I HEREBY CERTIFY THAT THE CURRENT AND DELINQUENT TAXES ON THE LANDS DESCRIBED WITHIN ARE PAID AND THE TRANSFER IS ENTERED June 4, 2012
Larry W. Dolan
PROPERTY TAX ADMINISTRATOR
BY *[Signature]*
DEPUTY

508789.001
Office of RECORDS & REGISTRATION
OF TITLES
STATE OF MINNESOTA COUNTY OF ANOKA
I hereby certify that this instrument was filed in this office on June 04, 2012 at 12:15 P.M.
and was duly recorded in Book 21 TOWNS Page 33
Larry W. Dolan
Recorder of Titles

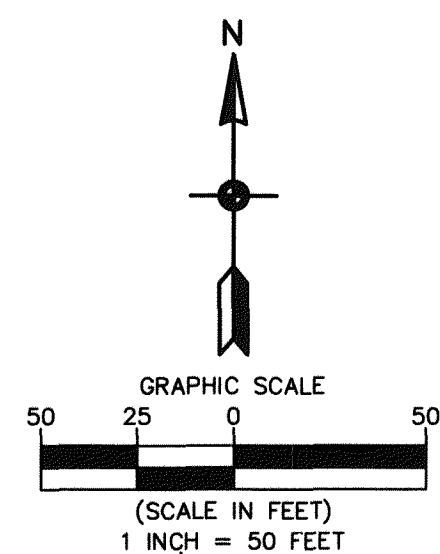
DRAINAGE AND UTILITY EASEMENTS ARE SHOWN THUS:



being 5 feet in width, and adjoining side lot lines, and 10 feet in width and adjoining right of way lines and rear lot lines unless otherwise shown on this plat.

For the purposes of this plat, the north line of Outlot B, GARDENWOOD is assumed to have a bearing of South 88°39'38" East.

- Denotes 1/2 inch by 14 inch iron monument set or to be set within one year of recording of this plat and marked with license number 40361
- Denotes Found Iron Monument marked with RLS 20595



\$56.00