

# WOODLANDS 2ND ADDITION

CITY OF RAMSEY  
COUNTY OF ANOKA  
SEC. 16, T. 32, R. 25  
Book 22 Jans Page 33

KNOW ALL PERSONS BY THESE PRESENTS: That U.S. Home Corporation, a Delaware corporation, owner of the following described property:

Outlot A and Outlot C, WOODLANDS, according to the recorded plat thereof, Anoka County, Minnesota

Has caused the same to be surveyed and platted as WOODLANDS 2ND ADDITION and does hereby dedicate to the public for public use the public way and the drainage and utility easements as created on this plat.

In witness whereof said U.S. Home Corporation, a Delaware corporation, has caused these presents to be signed by its proper officer this 3 day of MAY, 2016.

U.S. Home Corporation

By: [Signature]  
Jonathan A. Aune, Vice President

STATE OF Minnesota  
COUNTY OF Hennepin

This instrument was acknowledged before me on 3rd day of May, 2016, by Jonathan A. Aune, Vice President of U.S. Home Corporation, a Delaware corporation, on behalf of the corporation.

[Signature] Carole Toohay  
Hennepin County, MN  
My commission expires Jan 31 2017

I Marcus F. Hampton do hereby certify that this plat was prepared by me or under my direct supervision; that I am a duly Licensed Land Surveyor in the State of Minnesota; that this plat is a correct representation of the boundary survey; that all mathematical data and labels are correctly designated on this plat; that all monuments depicted on this plat have been, or will be correctly set within one year; that all water boundaries and wet lands, as defined in Minnesota Statutes, Section 505.01, Subd. 3, as of the date of this certificate are shown and labeled on this plat; and all public ways are shown and labeled on this plat.

Dated this 28 day of April, 2016.

[Signature]  
Marcus F. Hampton, Licensed Land Surveyor, Minnesota License No. 47481

STATE OF MINNESOTA  
COUNTY OF Dakota

This instrument was acknowledged before me on this 28 day of April, 2016 by Marcus F. Hampton.

[Signature] Patrick Miller  
Scott County, MN  
My commission expires January 31, 2019

### CITY COUNCIL, CITY OF RAMSEY, MINNESOTA

This plat of WOODLANDS 2ND ADDITION was approved and accepted by the City Council of the City of Ramsey, Minnesota at a regular meeting thereof held this 12 day of April, 2016 and said plat is in compliance with the provisions of Minnesota Statutes, Section 505.03, Subd. 2.

By: [Signature] [Signature]  
Mayor Clerk

### ANOKA COUNTY SURVEYOR

I hereby certify that in accordance with Minnesota Statutes, Section 505.021, Subd. 11, this plat has been reviewed and approved this 18 day of MAY, 2016.

[Signature]  
Larry D. Hojtm, Anoka County Surveyor

### ANOKA COUNTY AUDITOR/TREASURER

Pursuant to Minnesota Statutes, Section 505.021, Subd. 9, taxes payable in the year 2016 on the land hereinbefore described have been paid. Also, pursuant to Minnesota Statutes, Section 272.12, there are no delinquent taxes and transfer entered this 18 day of May, 2016.

[Signature]  
Property Tax Administrator

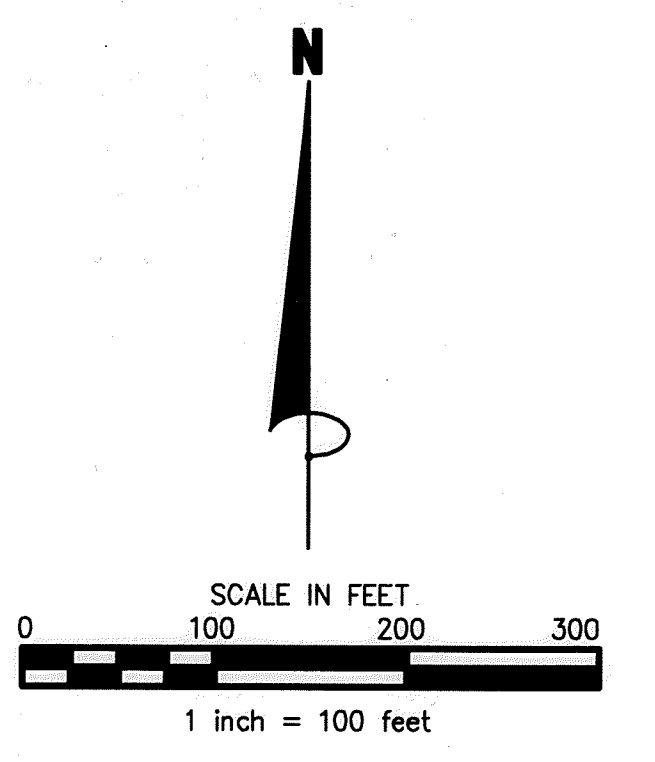
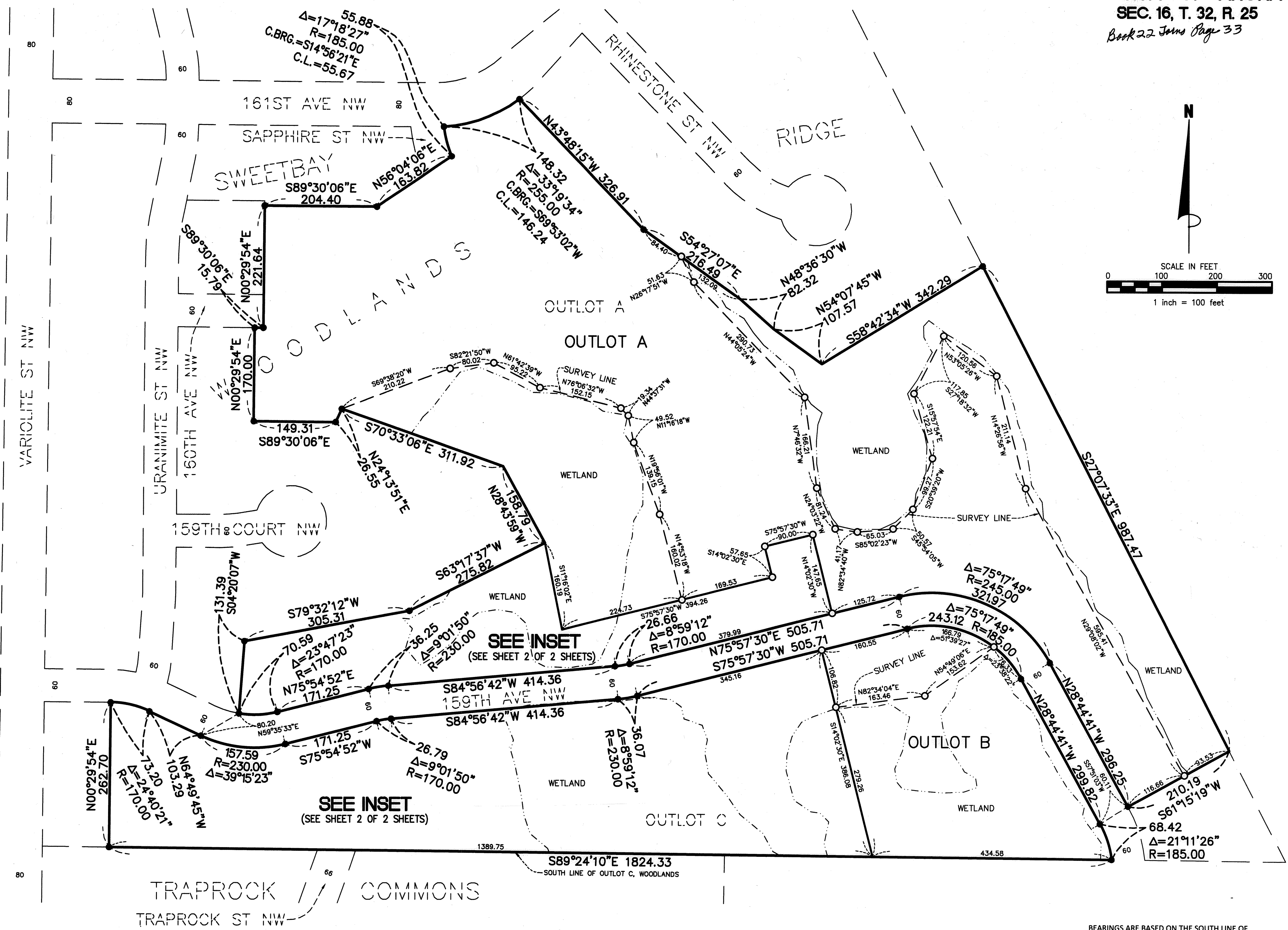
By: [Signature] Deputy

### COUNTY RECORDER/REGISTRAR OF TITLES, COUNTY OF ANOKA, STATE OF MINNESOTA

I hereby certify that this plat of WOODLANDS 2ND ADDITION was filed in the office of the County Recorder/Registrar of Titles for public record on this 18 day of May, 2016, at 10:23 o'clock P. M. and was duly recorded in Book 22 Jans Page 33, as Document Number 539819-002.

[Signature]  
County Recorder/Registrar of Titles

By: [Signature] Deputy



BEARINGS ARE BASED ON THE SOUTH LINE OF OUTLOT C, WOODLANDS, WHICH IS ASSUMED TO HAVE A BEARING OF S 89°24'10\"/>

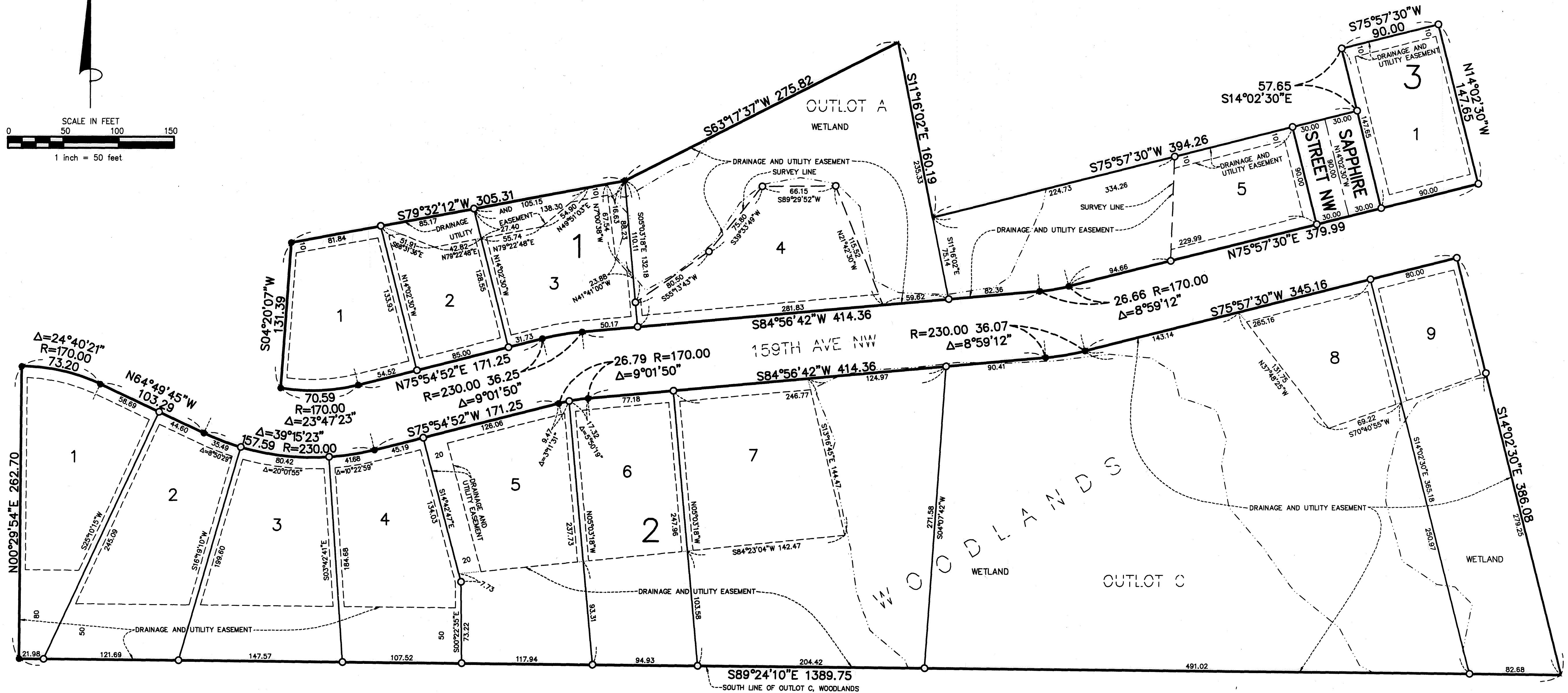
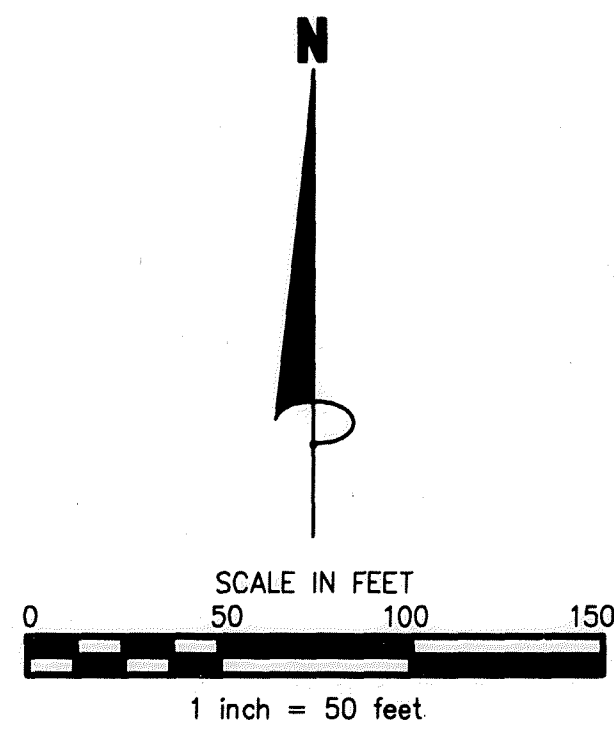
- DENOTES 1/2 INCH IRON MONUMENT FOUND
- DENOTES SET 1/2 INCH IRON MONUMENT WITH CAP MARKED R.L.S. NO. 47481
- - - DENOTES WETLAND DELINEATED BY KJOLHAUG ENVIRONMENTAL SERVICES COMPANY, JULY 2014

\$5600 JAMES R. HILL, INC.  
SHEET 1 OF 2 SHEETS

# WOODLANDS 2ND ADDITION

CITY OF RAMSEY  
COUNTY OF ANOKA  
SEC. 16, T. 32, R. 25  
Book 22 Irons Page 33

## INSET

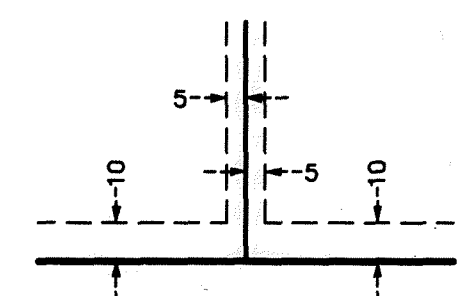


BEARINGS ARE BASED ON THE SOUTH LINE OF OUTLOT C, WOODLANDS, WHICH IS ASSUMED TO HAVE A BEARING OF S 89°24'10" E

- DENOTES 1/2 INCH IRON MONUMENT FOUND
- DENOTES SET 1/2 INCH IRON MONUMENT WITH CAP MARKED R.L.S. NO. 47481

--- DENOTES WETLAND DELINEATED BY KJOLHAUG ENVIRONMENTAL SERVICES COMPANY, JULY 2014

DRAINAGE AND UTILITY EASEMENTS ARE SHOWN THUS:



DRAINAGE AND UTILITY EASEMENTS BEING 5 FEET IN WIDTH, UNLESS OTHERWISE INDICATED, ADJOINING LOT LINES, AND BEING 10 FEET IN WIDTH, UNLESS OTHERWISE INDICATED, ADJOINING RIGHT OF WAY LINES, AS SHOWN ON THE PLAT.