

OFFICIAL PLAT

WOODLANDS 3RD ADDITION

Blk 22 of Towns Range 37

CITY OF RAMSEY
COUNTY OF ANOKA
SEC. 16, T. 32, R. 25

KNOW ALL PERSONS BY THESE PRESENTS: That U.S. Home Corporation, a Delaware corporation, owner of the following described property:

Outlot A, WOODLANDS 2ND ADDITION, according to the recorded plat thereof, Anoka County, Minnesota

Has caused the same to be surveyed and platted as WOODLANDS 3RD ADDITION and does hereby dedicate to the public for public use the public ways and the drainage and utility easements as created on this plat.

In witness whereof said U.S. Home Corporation, a Delaware corporation, has caused these presents to be signed by its proper officer this 20th day of July, 2016.

U.S. Home Corporation

By: Jonathan A. Aune, Vice President

STATE OF Minnesota
COUNTY OF Hennepin

This instrument was acknowledged before me on 20th day of July, 2016, by Jonathan A. Aune, Vice President of U.S. Home Corporation, a Delaware corporation, on behalf of the corporation.

Carole Toohay
Hennepin County, Minnesota
My commission expires Jan 31 2017

I Marcus F. Hampton do hereby certify that this plat was prepared by me or under my direct supervision; that I am a duly Licensed Land Surveyor in the State of Minnesota; that this plat is a correct representation of the boundary survey; that all mathematical data and labels are correctly designated on this plat; that all monuments depicted on this plat have been, or will be correctly set within one year; that all water boundaries and wet lands, as defined in Minnesota Statutes, Section 505.01, Subd. 3, as of the date of this certificate are shown and labeled on this plat; and all public ways are shown and labeled on this plat.

Dated this 25th day of July, 2016.

Marcus F. Hampton, Licensed Land Surveyor, Minnesota License No. 47481

STATE OF MINNESOTA
COUNTY OF Dakota

This instrument was acknowledged before me on this 25th day of July, 2016, by Marcus F. Hampton.

Jessika C. Bell
Dakota County, Minnesota
My commission expires January 31, 2021

CITY COUNCIL, CITY OF RAMSEY, MINNESOTA

This plat of WOODLANDS 3RD ADDITION was approved and accepted by the City Council of the City of Ramsey, Minnesota at a regular meeting thereof held this 14th day of June, 2016, and said plat is in compliance with the provisions of Minnesota Statutes, Section 505.03, Subd. 2.

City Council, City of Ramsey, Minnesota

By: Saul Dean, Mayor
Clerk: Jessika C. Bell

ANOKA COUNTY SURVEYOR

I hereby certify that in accordance with Minnesota Statutes, Section 505.021, Subd. 11, this plat has been reviewed and approved this 3rd day of August, 2016.

Larry D. Holm, Anoka County Surveyor

ANOKA COUNTY AUDITOR/TREASURER

Pursuant to Minnesota Statutes, Section 505.021, Subd. 9, taxes payable in the year 2016 on the land hereinbefore described have been paid. Also, pursuant to Minnesota Statutes, Section 272.12, there are no delinquent taxes and transfer entered this 3rd day of August, 2016.

Jonell M. Sawyer, Property Tax Administrator

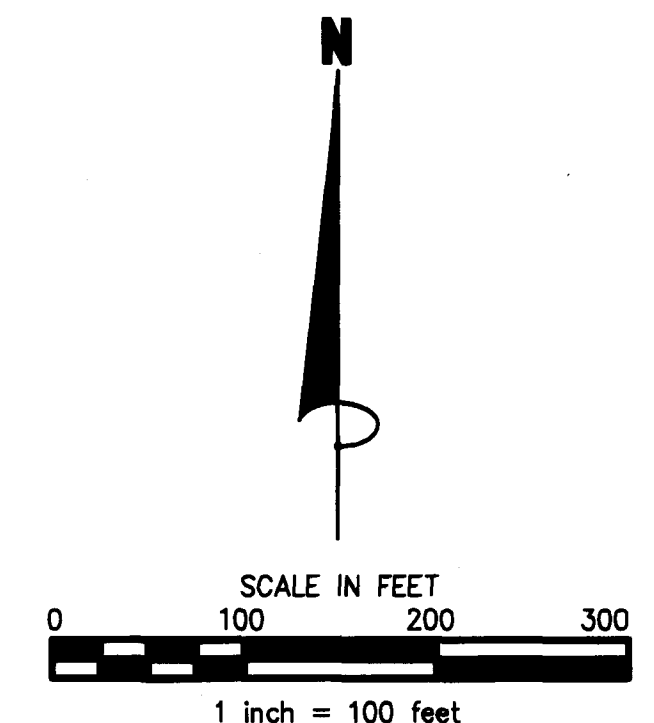
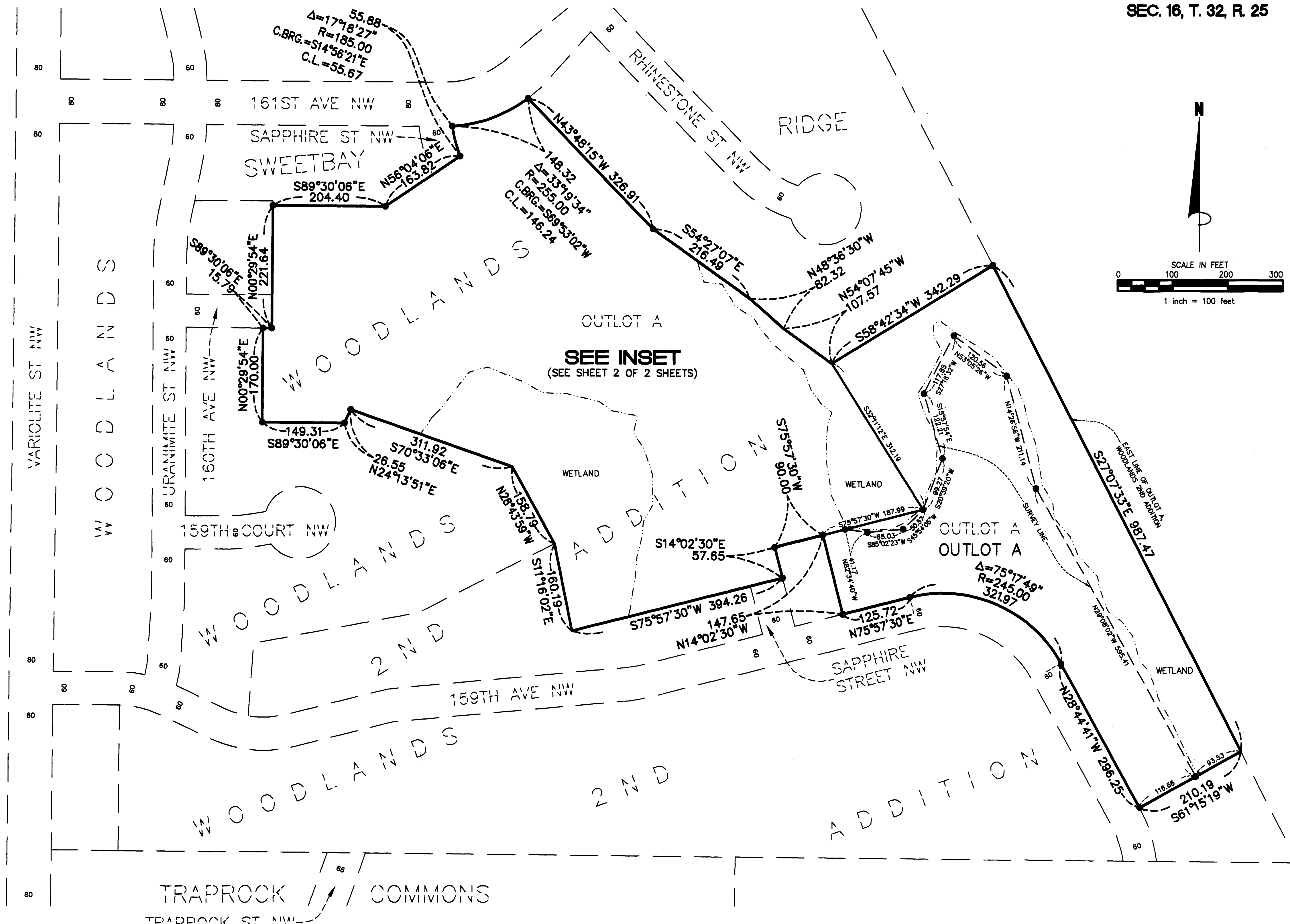
By: J. M. Buchner, Deputy

COUNTY RECORDER/REGISTRAR OF TITLES, COUNTY OF ANOKA, STATE OF MINNESOTA

I hereby certify that this plat of WOODLANDS 3RD ADDITION was filed in the office of the County Recorder/Registrar of Titles for public record on this 3rd day of August, 2016, at 1:11 o'clock P. M. and was duly recorded in Book 22 of Towns, Page 37, as Document Number 540841.001.

Jonell M. Sawyer, County Recorder/Registrar of Titles

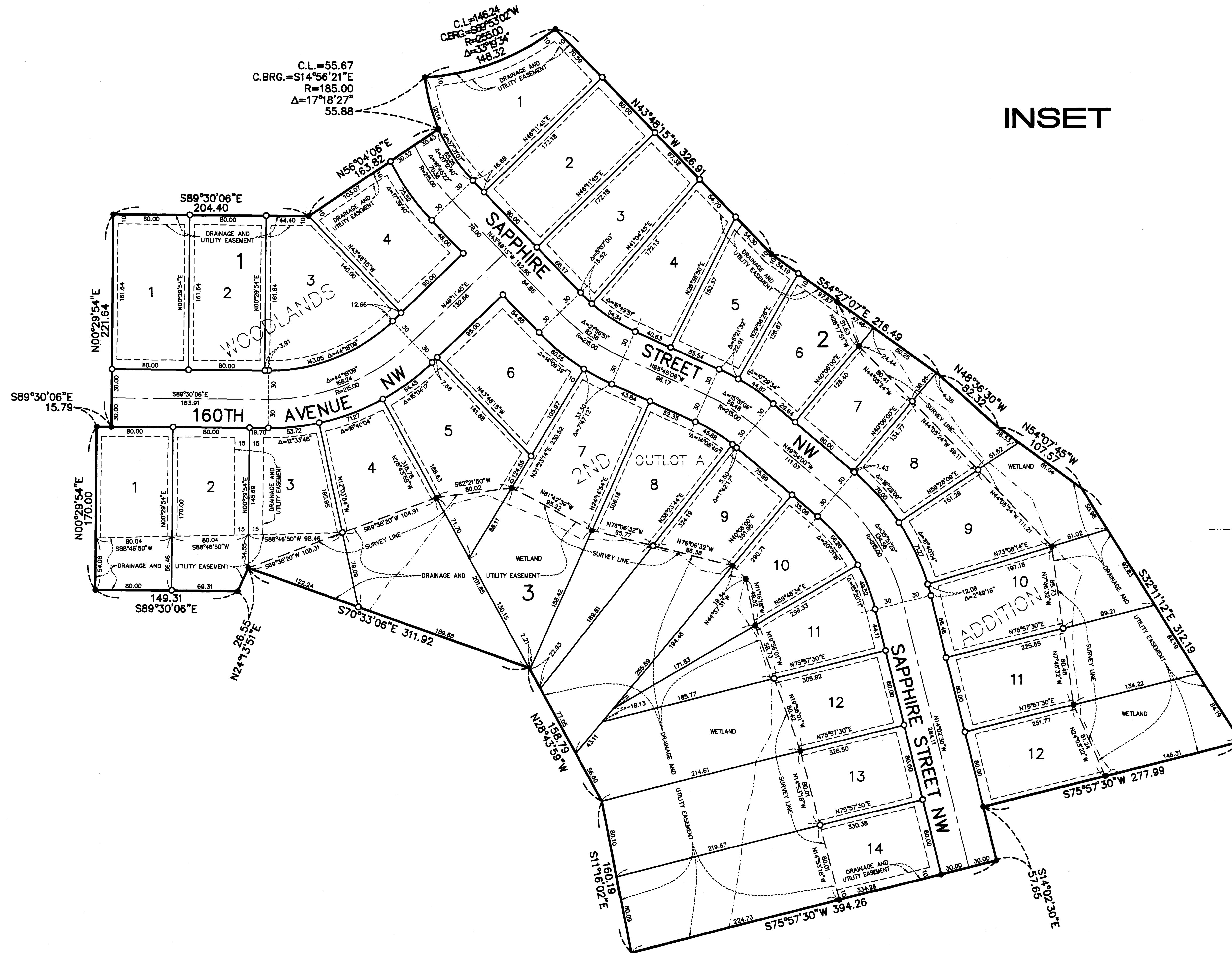
By: J. M. Buchner, Deputy



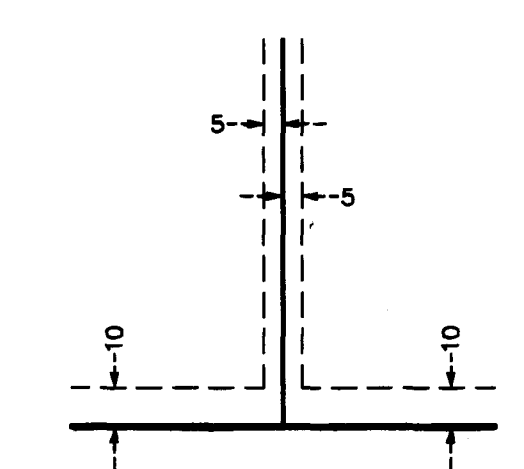
- BEARINGS ARE BASED ON THE EAST LINE OF OUTLOT A, WOODLANDS 2ND ADDITION, WHICH IS ASSUMED TO HAVE A BEARING OF S 27°07'33\" E
- DENOTES 1/2 INCH IRON MONUMENT FOUND
- DENOTES SET 1/2 INCH IRON MONUMENT WITH CAP MARKED R.L.S. NO. 47481
- DENOTES WETLAND DELINEATED BY KJOLHAUG ENVIRONMENTAL SERVICES COMPANY, JULY 2014

WOODLANDS 3RD ADDITION

INSET



DRAINAGE AND UTILITY EASEMENTS ARE SHOWN THUS:



DRAINAGE AND UTILITY EASEMENTS BEING 5 FEET IN WIDTH, UNLESS OTHERWISE INDICATED, ADJOINING LOT LINES, AND BEING 10 FEET IN WIDTH, UNLESS OTHERWISE INDICATED, ADJOINING RIGHT OF WAY LINES, AS SHOWN ON THE PLAT.

BEARINGS ARE BASED ON THE EAST LINE OF OUTLOT A, WOODLANDS 2ND ADDITION, WHICH IS ASSUMED TO HAVE A BEARING OF S 27°07'33" E

- DENOTES 1/2 INCH IRON MONUMENT FOUND
- DENOTES SET 1/2 INCH IRON MONUMENT WITH CAP MARKED R.L.S. NO. 47481
- - - DENOTES WETLAND DELINEATED BY KJOLHAUG ENVIRONMENTAL SERVICES COMPANY, JULY 2014

