

# WOODLANDS 4TH ADDITION

KNOW ALL PERSONS BY THESE PRESENTS: That U.S. Home Corporation, a Delaware corporation, owner of the following described property:

Outlot B, WOODLANDS, according to the recorded plat thereof, Anoka County, Minnesota.

And

Outlot B, WOODLANDS 2ND ADDITION, according to the recorded plat thereof, Anoka County, Minnesota.

And

Outlot A, WOODLANDS 3RD ADDITION, according to the recorded plat thereof, Anoka County, Minnesota.

And

That part of the Southeast Quarter of the Southeast Quarter of Section 16, Township 32, Range 25, Anoka County, Minnesota, described as follows:

Commencing at the northwest corner of said Southeast Quarter of the Southeast Quarter; thence on an assumed bearing of South 89 degrees 24 minutes 10 seconds East, along the north line of said Southeast Quarter of the Southeast Quarter, a distance of 352.58 feet to the point of beginning of the land to be described; thence continuing South 89 degrees 24 minutes 10 seconds East, along said north line, a distance of 968.77 feet to the northeast corner of said Southeast Quarter of the Southeast Quarter; thence South 00 degrees 52 minutes 52 seconds West, along the east line of said Southeast Quarter of the Southeast Quarter, a distance of 805.01 feet; thence North 89 degrees 24 minutes 10 seconds West a distance of 810.01 feet; thence North 00 degrees 52 minutes 52 seconds East a distance of 555.01 feet; thence North 31 degrees 37 minutes 00 seconds West a distance of 295.48 feet to the point of beginning.

Has caused the same to be surveyed and platted as WOODLANDS 4TH ADDITION and does hereby dedicate to the public for public use the public ways and the drainage and utility easements as created on this plat.

In witness whereof said U.S. Home Corporation, a Delaware corporation, has caused these presents to be signed by its proper officer this 28 day of Dec, 2017.

U.S. Home Corporation

By: [Signature]  
Jonathan A. Aune, Vice President

STATE OF Minnesota  
COUNTY OF Hennepin

This instrument was acknowledged before me on 28 day of December, 2017 by Jonathan A. Aune, Vice President of U.S. Home Corporation, a Delaware corporation, on behalf of the corporation.

Amanda Hofman [Signature]  
Hennepin County, Minnesota  
My commission expires Jan 31, 2019

I, Marcus F. Hampton do hereby certify that this plat was prepared by me or under my direct supervision; that I am a duly Licensed Land Surveyor in the State of Minnesota; that this plat is a correct representation of the boundary survey; that all mathematical data and labels are correctly designated on this plat; that all monuments depicted on this plat have been, or will be correctly set within one year; that all water boundaries and wet lands, as defined in Minnesota Statutes, Section 505.01, Subd. 3, as of the date of this certificate are shown and labeled on this plat; and all public ways are shown and labeled on this plat.

Dated this 18 day of December, 2017.

[Signature]  
Marcus F. Hampton, Licensed Land Surveyor, Minnesota License No. 47481

STATE OF MINNESOTA  
COUNTY OF Dakota

This instrument was acknowledged before me on this 18<sup>th</sup> day of December, 2017 by Marcus F. Hampton.

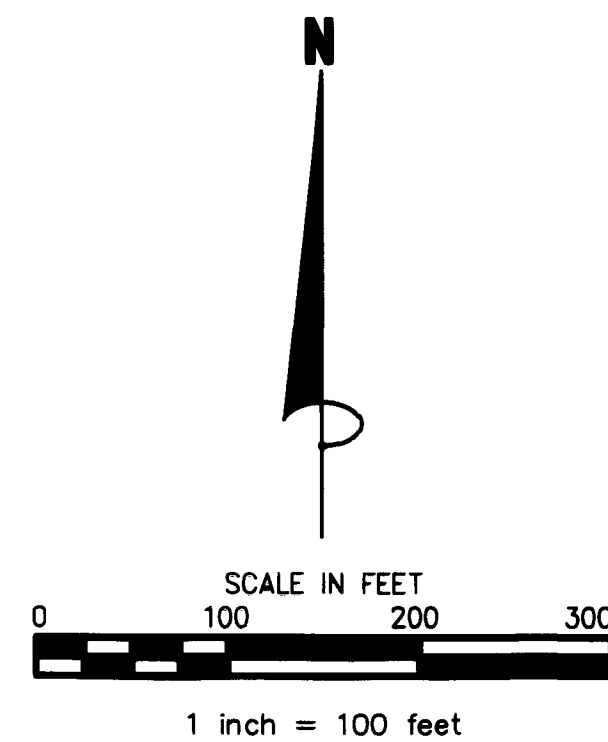
[Signature] Patrick Miller  
Scott County, Minnesota  
My commission expires January 31, 2019

CITY COUNCIL, CITY OF RAMSEY, MINNESOTA

This plat of WOODLANDS 4TH ADDITION was approved and accepted by the City Council of the City of Ramsey, Minnesota at a regular meeting thereof held this 9<sup>th</sup> day of May, 2017 and said plat is in compliance with the provisions of Minnesota Statutes, Section 505.03, Subd. 2.

City Council, City of Ramsey, Minnesota

By: [Signature] [Signature]  
Mayor Clerk



BEARINGS ARE BASED ON THE NORTH LINE OF SOUTHEAST QUARTER OF THE SOUTHEAST QUARTER OF SEC. 16, T. 32, R. 25, WHICH IS ASSUMED TO HAVE A BEARING OF S 89°24'10" E.  
● DENOTES 1/2 INCH IRON MONUMENT FOUND  
○ DENOTES SET 1/2 INCH IRON MONUMENT WITH CAP MARKED R.L.S. NO. 47481

ANOKA COUNTY SURVEYOR

I hereby certify that in accordance with Minnesota Statutes, Section 505.021, Subd. 11, this plat has been reviewed and approved this 12<sup>th</sup> day of FEBRUARY, 2018.

[Signature]  
Larry D. Holm, Anoka County Surveyor

ANOKA COUNTY AUDITOR/TREASURER

Pursuant to Minnesota Statutes, Section 505.021, Subd. 9, taxes payable in the year 2018 on the land hereinbefore described have been paid. Also, pursuant to Minnesota Statutes, Section 272.12, there are no delinquent taxes and transfer entered this 12<sup>th</sup> day of Feb., 2018.

Jonell M. Sawyer  
Property Tax Administrator

By: [Signature], Deputy

COUNTY RECORDER/REGISTRAR OF TITLES, COUNTY OF ANOKA, STATE OF MINNESOTA

I hereby certify that this plat of WOODLANDS 4TH ADDITION was filed in the office of the County Recorder/Registrar of Titles for public record on this 12<sup>th</sup> day of Feb., 2018, at 2:52 o'clock P. M. and was duly recorded as Document Number 554754.003.

Jonell M. Sawyer  
County Recorder/Registrar of Titles

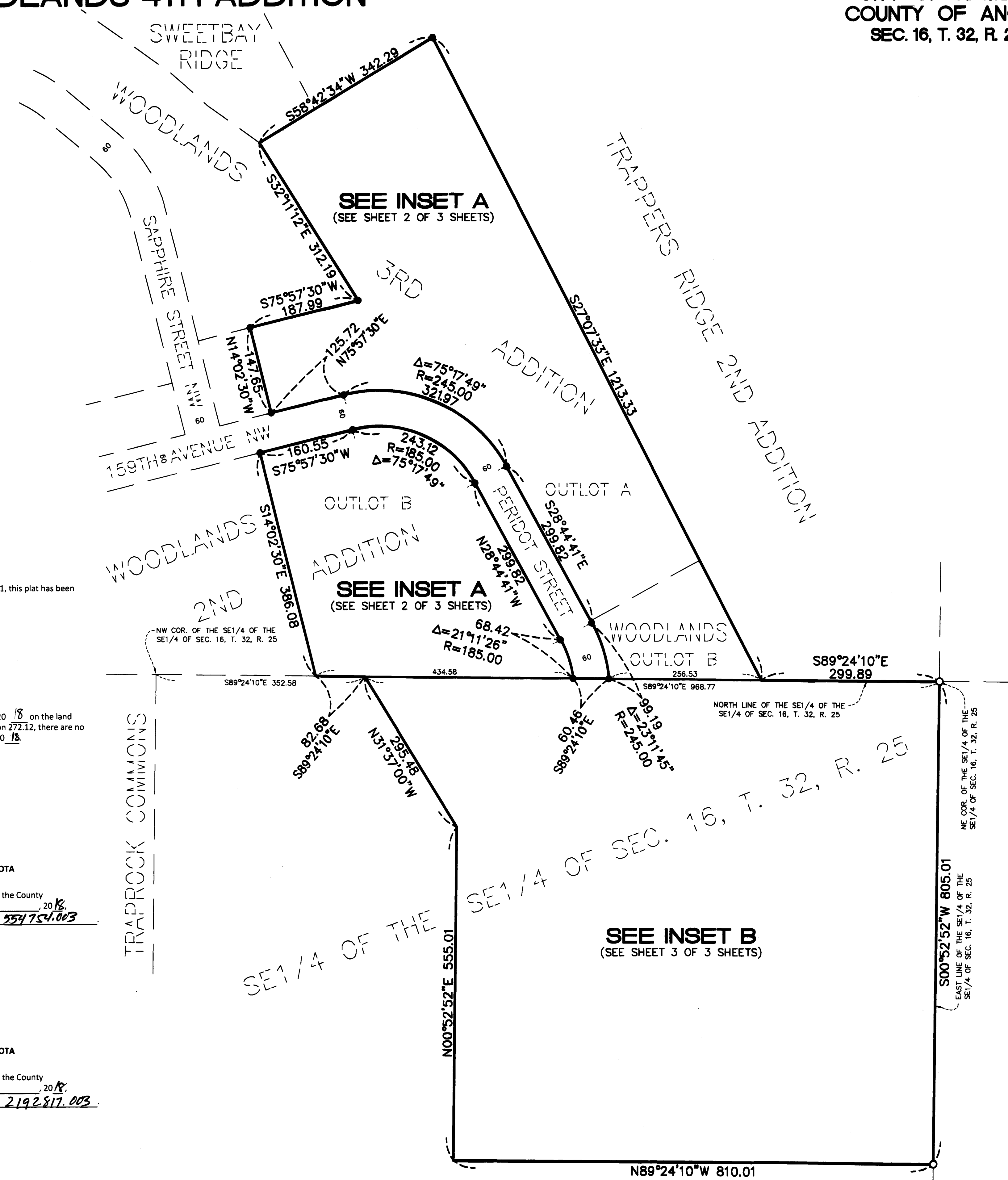
By: [Signature], Deputy

COUNTY RECORDER/REGISTRAR OF TITLES, COUNTY OF ANOKA, STATE OF MINNESOTA

I hereby certify that this plat of WOODLANDS 4TH ADDITION was filed in the office of the County Recorder/Registrar of Titles for public record on this 12<sup>th</sup> day of Feb., 2018, at 2:52 o'clock P. M. and was duly recorded as Document Number 2192817.003.

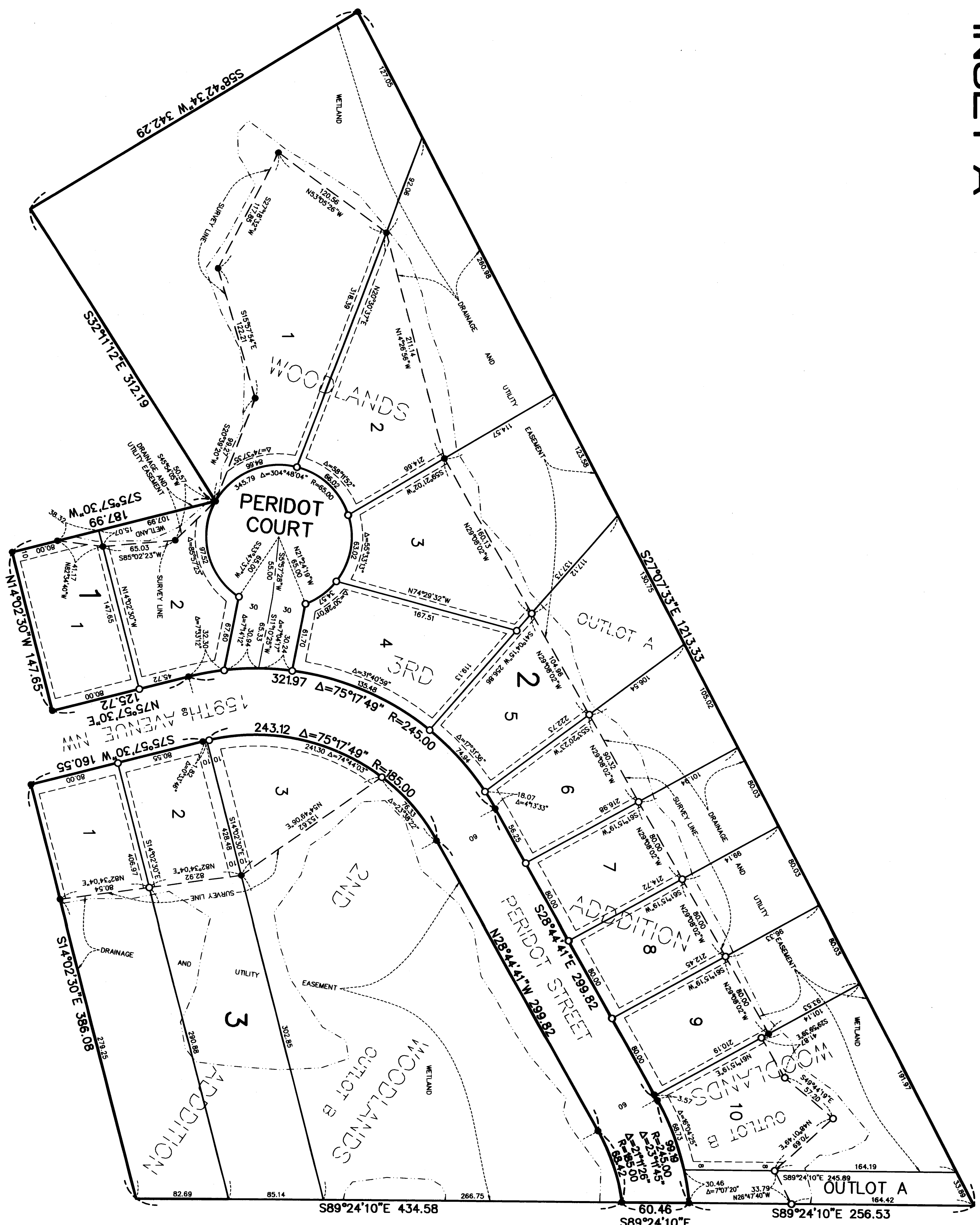
Jonell M. Sawyer  
County Recorder/Registrar of Titles

By: [Signature], Deputy

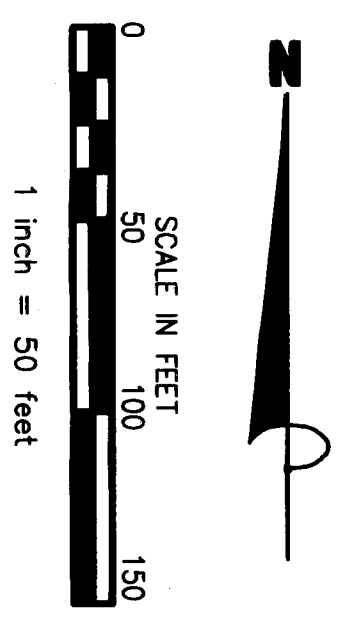


# WOODLANDS 4TH ADDITION

## INSET A

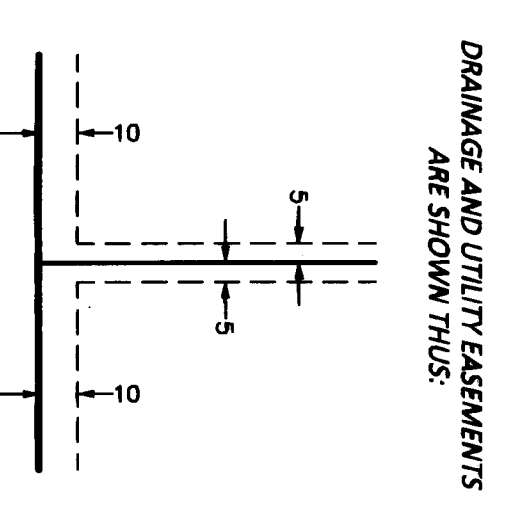


CITY OF RAMSEY  
 COUNTY OF ANOKA  
 SEC. 16, T. 32, R. 25



BEARINGS ARE BASED ON THE NORTH LINE OF SOUTH BEND QUARTER OF THE SOUTHWEST 1/4 SEC. 16, T. 32, R. 25, WHICH IS ASSUMED TO HAVE A BEARING OF S 89°24'10\"/>

- DENOTES 1/2 INCH IRON MONUMENT FOUND
- DENOTES SET 1/2 INCH IRON MONUMENT WITH CAP MARKED R.L.S. NO. 47481
- DENOTES WETLAND DELINEATED BY KOHLHAUG ENVIRONMENTAL SERVICES COMPANY, JULY 2014

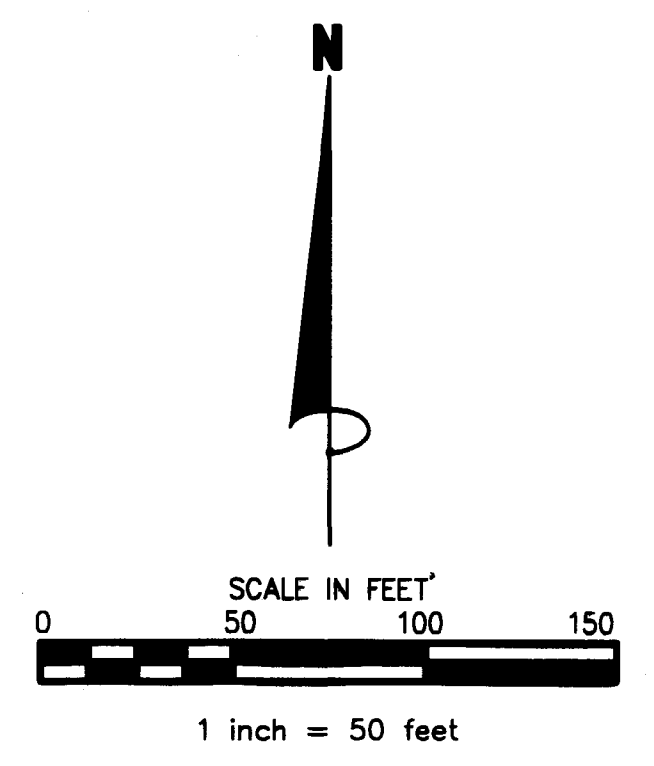
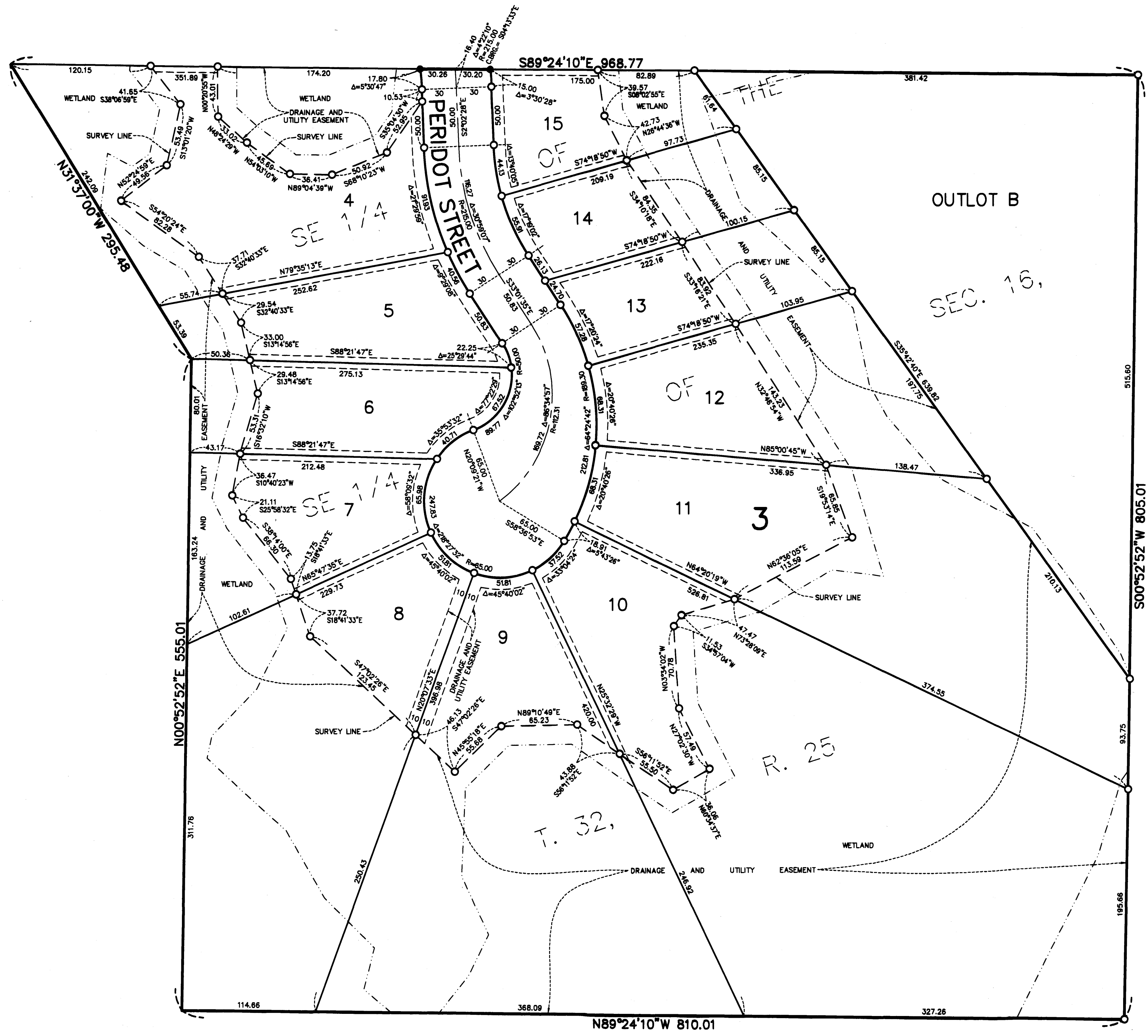


DRAINAGE AND UTILITY EASEMENTS BEING 5 FEET WIDE UNLESS OTHERWISE INDICATED. UNLESS OTHERWISE INDICATED, ADJOINING RIGHT OF WAY LINES, AS SHOWN ON THE PLAT.

# WOODLANDS 4TH ADDITION

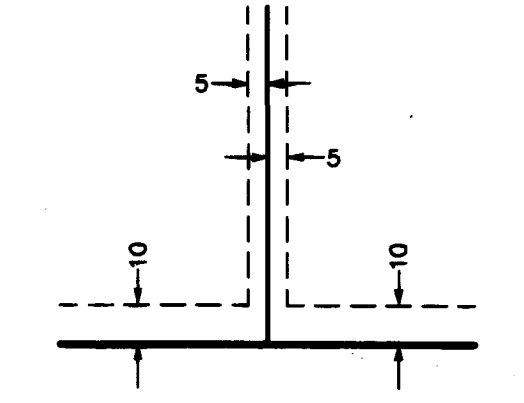
CITY OF RAMSEY  
COUNTY OF ANOKA  
SEC. 16, T. 32, R. 25

## INSET B



- BEARINGS ARE BASED ON THE NORTH LINE OF SOUTHEAST QUARTER OF THE SOUTHEAST QUARTER OF SEC. 16, T. 32, R. 25, WHICH IS ASSUMED TO HAVE A BEARING OF S 89°24'10" E.
- DENOTES 1/2 INCH IRON MONUMENT FOUND
  - DENOTES SET 1/2 INCH IRON MONUMENT WITH CAP MARKED R.L.S. NO. 47481
  - DENOTES WETLAND DELINEATED BY KJOLHAUG ENVIRONMENTAL SERVICES COMPANY, JULY 2014

DRAINAGE AND UTILITY EASEMENTS ARE SHOWN THUS:



DRAINAGE AND UTILITY EASEMENTS BEING 5 FEET IN WIDTH, UNLESS OTHERWISE INDICATED, ADJOINING LOT LINES, AND BEING 10 FEET IN WIDTH, UNLESS OTHERWISE INDICATED, ADJOINING RIGHT OF WAY LINES, AS SHOWN ON THE PLAT.