

WOODLANDS

CITY OF RAMSEY
COUNTY OF ANOKA
SEC. 16, T. 32, R. 25

Book 22 Tolens
Pg 22

KNOW ALL PERSONS BY THESE PRESENTS: That US Home Corporation, a Delaware corporation, owner of the following described property:

Outlot A and Outlot E, SWEETBAY RIDGE, according to the recorded thereof, Anoka County, Minnesota.

Has caused the same to be surveyed and platted as WOODLANDS and does hereby dedicate to the public for public use the public ways and the drainage and utility easements as shown on this plat.

In witness whereof said US Home Corporation, a Delaware corporation, has caused these presents to be signed by its proper officer this 9 day of July, 2015.

US Home Corporation

By Jonathan A. Aune, Vice President

State of Minnesota
County of Hennepin

This instrument was acknowledged before me on July 9th 2015 by Jonathan A. Aune, as Vice President of US Home Corporation, a Delaware corporation, on behalf of the corporation.

Carole Tanhey
Notary Public, Hennepin County, Minnesota
My commission expires Jan 31 2017

I Kyle J. Roddy do hereby certify that this plat was prepared by me or under my direct supervision; that I am a duly Licensed Land Surveyor in the State of Minnesota; that this plat is a correct representation of the boundary survey, that all mathematical data and labels are correctly designated on this plat; that all monuments depicted on this plat have been, or will be correctly set within one year; that all water boundaries and wet lands, as defined in Minnesota Statutes, Section 505.01, Subd. 3, as of the date of this certificate are shown and labeled on this plat; and all public ways are shown and labeled on this plat.

Dated this 8th day of July, 2015.

Kyle J. Roddy
Kyle J. Roddy, Licensed Land Surveyor
Minnesota License Number 42627

State of Minnesota
County of Santi

This instrument was acknowledged before me on 7-8-2015 by Kyle J. Roddy.

Jacqueline K. Bates
JACQUELINE K. BATES
Notary Public, Santi County, Minnesota
My commission expires 01-31-2015

CITY COUNCIL, CITY OF RAMSEY, MINNESOTA

This plat of WOODLANDS was approved and accepted by the City Council of the City of Ramsey, Minnesota at a regular meeting thereof held this 11th day of SEPTEMBER, 2014, and said plat is in compliance with the provisions of Minnesota Statutes, Section 505.03, Subd. 2.

CITY COUNCIL, CITY OF RAMSEY, MINNESOTA

By [Signature] Mayor By [Signature] City Clerk

ANOKA COUNTY SURVEYOR

I hereby certify that in accordance with Minnesota Statutes, Section 505.021, Subd. 11, this plat has been reviewed and approved this 17th day of July, 2015.

Larry D. Haugen
Larry D. Haugen, Anoka County Surveyor

COUNTY AUDITOR/TREASURER

Pursuant to Minnesota Statutes, Section 505.021, Subd. 9, taxes payable in the year 2015 on the land hereinbefore described have been paid. Also, pursuant to Minnesota Statutes, Section 272.12, there are no delinquent taxes and transfer entered this 10 day of August, 2015.

Jonell M. Sawyer
Property Tax Administrator

By GKE Deputy

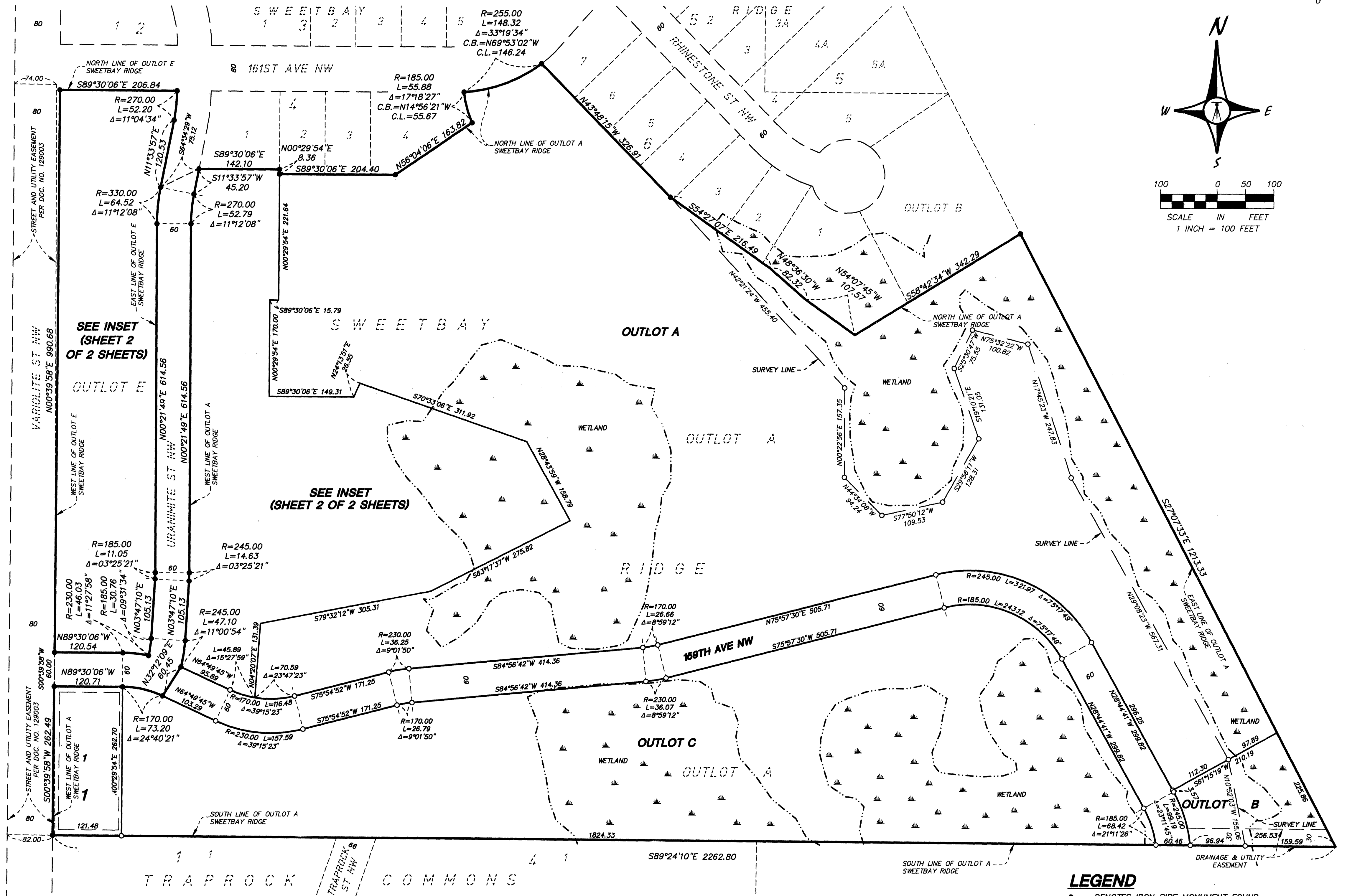
COUNTY RECORDER/REGISTRAR OF TITLES

County of Anoka, State of Minnesota

I hereby certify that this plat of WOODLANDS was filed in the office of the County Recorder/Registrar of Titles for public record on this 10 day of August, 2015, at 1:18 clock P.M. and was duly recorded in Book 22 Page 22 as Document Number 532617003

Jonell M. Sawyer
County Recorder/Registrar of Titles

By GKE Deputy



LEGEND

- DENOTES IRON PIPE MONUMENT FOUND
- DENOTES SET 1/2" IRON PIPE WITH CAP MARKED R.L.S. 42627

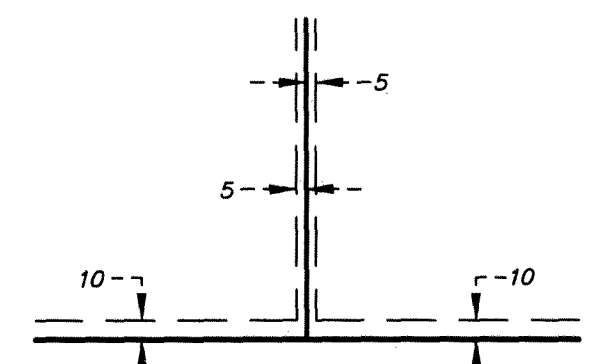
BEARING NOTE

FOR THE PURPOSES OF THIS PLAT, THE SOUTH LINE OF OUTLOT A, SWEETBAY RIDGE, IS ASSUMED TO HAVE A BEARING OF SOUTH 89 DEGREES 24 MINUTES 10 SECONDS EAST.

WETLAND NOTE

THE WETLANDS SHOWN HEREON WERE DELINEATED BY KJOLHAUG ENVIRONMENTAL, JULY 2014.

DRAINAGE AND UTILITY EASEMENTS ARE SHOWN THUS:



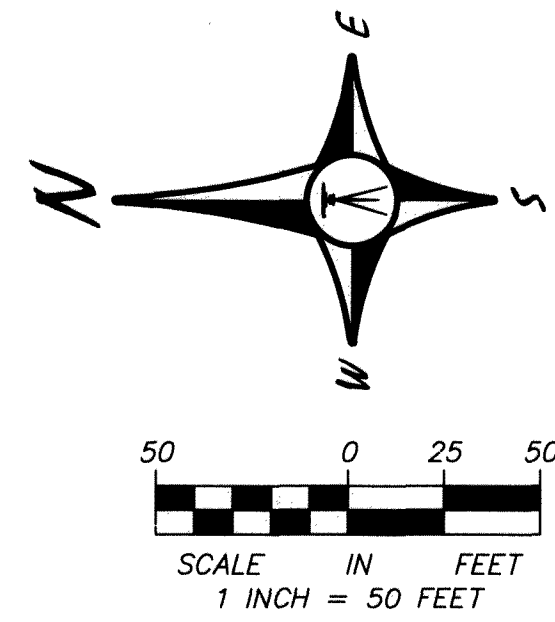
BEING 5 FEET IN WIDTH AND ADJOINING SIDE LOT LINES, AND 10 FEET IN WIDTH, AND ADJOINING STREET AND REAR LOT LINES, UNLESS OTHERWISE SHOWN ON THE PLAT.

APA CONSULTING ENGINEERS & SURVEYORS

56.00

WOODLANDS INSET

Book 22, Plans Pg 22



- LEGEND**
- DENOTES IRON PIPE MONUMENT FOUND
 - DENOTES SET 1/2" IRON PIPE WITH CAP MARKED R.L.S. 42627

BEARING NOTE

FOR THE PURPOSES OF THIS PLAT, THE SOUTH LINE OF OUTLOT A, SWEETBAY RIDGE, IS ASSUMED TO HAVE A BEARING OF SOUTH 89 DEGREES 24 MINUTES 10 SECONDS EAST.

WETLAND NOTE

THE WETLANDS SHOWN HEREON WERE DELINEATED BY KJOLHAUG ENVIRONMENTAL, JULY 2014.

