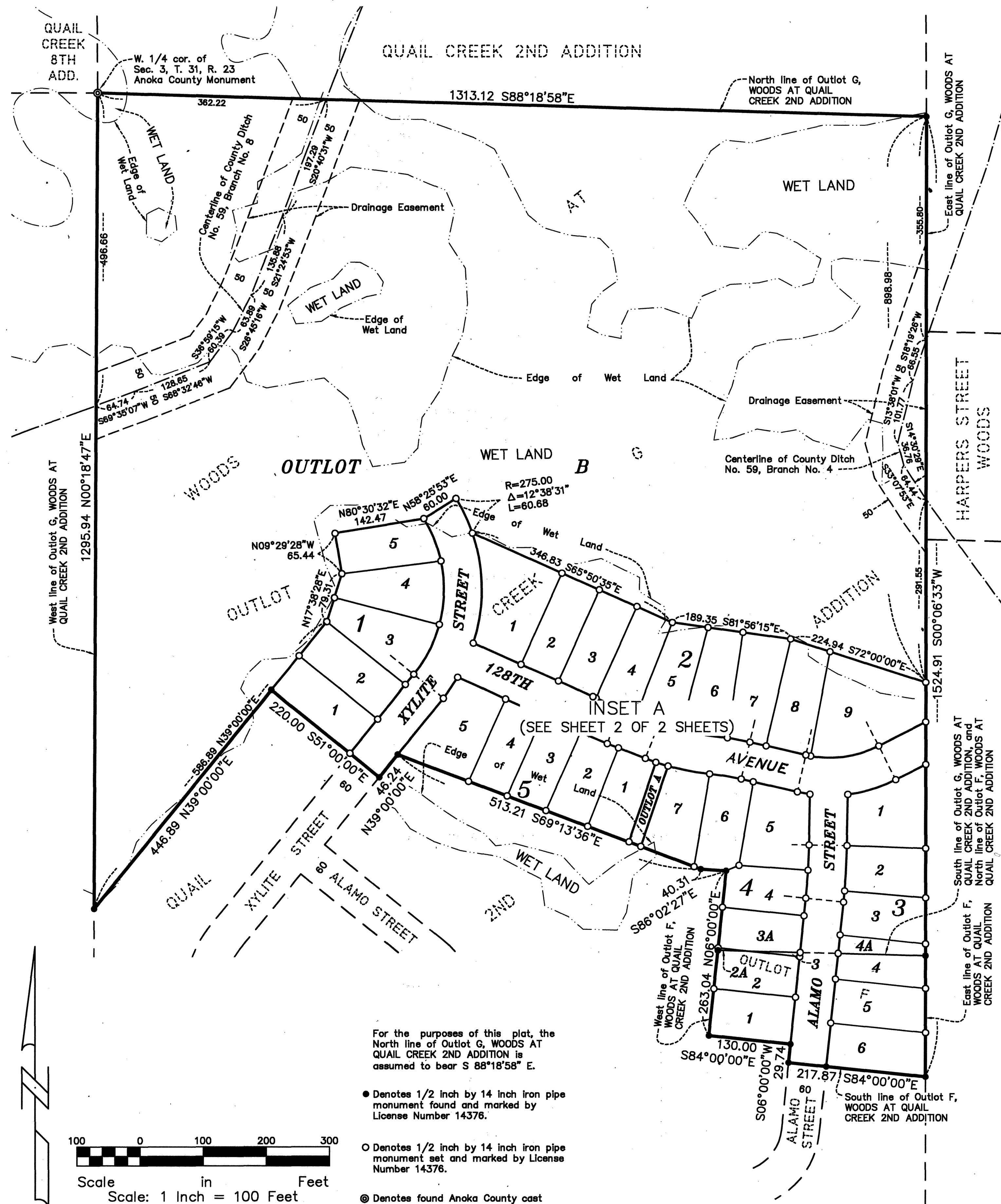


WOODS AT QUAIL CREEK 3RD ADDITION

City of Blaine
County of Anoka
Sec. 3, T. 31, R. 23
Book 77 Abstract Page 21



For the purposes of this plat, the North line of Outlot G, WOODS AT QUAIL CREEK 2ND ADDITION is assumed to bear S 88°18'58" E.

- Denotes 1/2 inch by 14 inch iron pipe monument found and marked by License Number 14376.
- Denotes 1/2 inch by 14 inch iron pipe monument set and marked by License Number 14376.
- ⊙ Denotes found Anoka County cast iron monument.

KNOW ALL PERSONS BY THESE PRESENTS: That U.S. Home Corporation, a Delaware corporation, owner of the following described property:
Outlots F and G, WOODS AT QUAIL CREEK 2ND ADDITION, according to the record plat thereof.
Has caused the same to be surveyed and platted as WOODS AT QUAIL CREEK 3RD ADDITION and does hereby dedicate to the public for public use the public ways and the drainage and utility easements as created by this plat.

In witness whereof said U.S. Home Corporation, a Delaware corporation, has caused these presents to be signed by its proper officer this 23 day of April, 2014.

U.S. HOME CORPORATION
[Signature]
Vice President

STATE OF MINNESOTA
COUNTY OF Hennepin
This instrument was acknowledged before me this 23rd day of April, 2014 by Jon Aune, as Vice President of U.S. Home Corporation, a Delaware corporation, on behalf of the corporation.

[Signature]
Carole Poshay
Notary Public, Minnesota
My Commission Expires Jan 31 2017

I Jeffrey D. Lindgren do hereby certify that this plat was prepared by me or under my direct supervision; that I am a duly Licensed Land Surveyor in the State of Minnesota; that this plat is a correct representation of the boundary survey; that all mathematical data and labels are correctly designated on this plat; that all monuments depicted on this plat have been, or will be correctly set within one year; that all water boundaries and wet lands, as defined in Minnesota Statutes, Section 505.01, Subd. 3, as of the date of this certificate are shown and labeled on this plat; and all public ways are shown and labeled on this plat.

Dated this 21 day of April, 2014.
[Signature]
Jeffrey D. Lindgren, Licensed Land Surveyor
Minnesota License No. 14376

STATE OF MINNESOTA
COUNTY OF DAKOTA
This instrument was acknowledged before me this 21 day of April, 2014 by Jeffrey D. Lindgren.

[Signature]
Ashley Marie Hedlund
Notary Public, Minnesota
My Commission Expires 1-31-2017

CITY COUNCIL, CITY OF BLAINE, MINNESOTA
This plat of WOODS AT QUAIL CREEK 3RD ADDITION was approved and accepted by the City Council of the City of Blaine, Minnesota at a regular meeting thereof held this 20th day of February, 2014, and said plat is in compliance with the provisions of Minnesota Statutes, Section 505.03, Subd. 2.

CITY COUNCIL, CITY OF BLAINE, MINNESOTA
By: *[Signature]*, Mayor
By: *[Signature]*, Clerk

ANOKA COUNTY SURVEYOR
I hereby certify that in accordance with Minnesota Statutes, Section 505.021, Subd. 11, this plat has been reviewed and approved this 25th day of June, 2014.

By Larry D. Hoium by Charles F. Setzer, Deputy
Larry D. Hoium
Anoka County Surveyor
524121.001 2085159.001

Office of RECORDER/REGISTRAR OF TITLES
STATE OF MINNESOTA COUNTY OF ANK
I hereby certify that the within instrument was filed
this office for record on the 30th day of
June, 2014 at 10:27 o'clock A.M.
and was duly recorded in book 77, page 21
[Signature]
Deputy

Office of RECORDER/REGISTRAR OF TITLES
STATE OF MINNESOTA COUNTY OF ANK
I hereby certify that the within instrument was filed
this office for record on the 30th day of
June, 2014 at 12:18 o'clock P.M.
and was duly recorded in book 77, page 21
[Signature]
Deputy

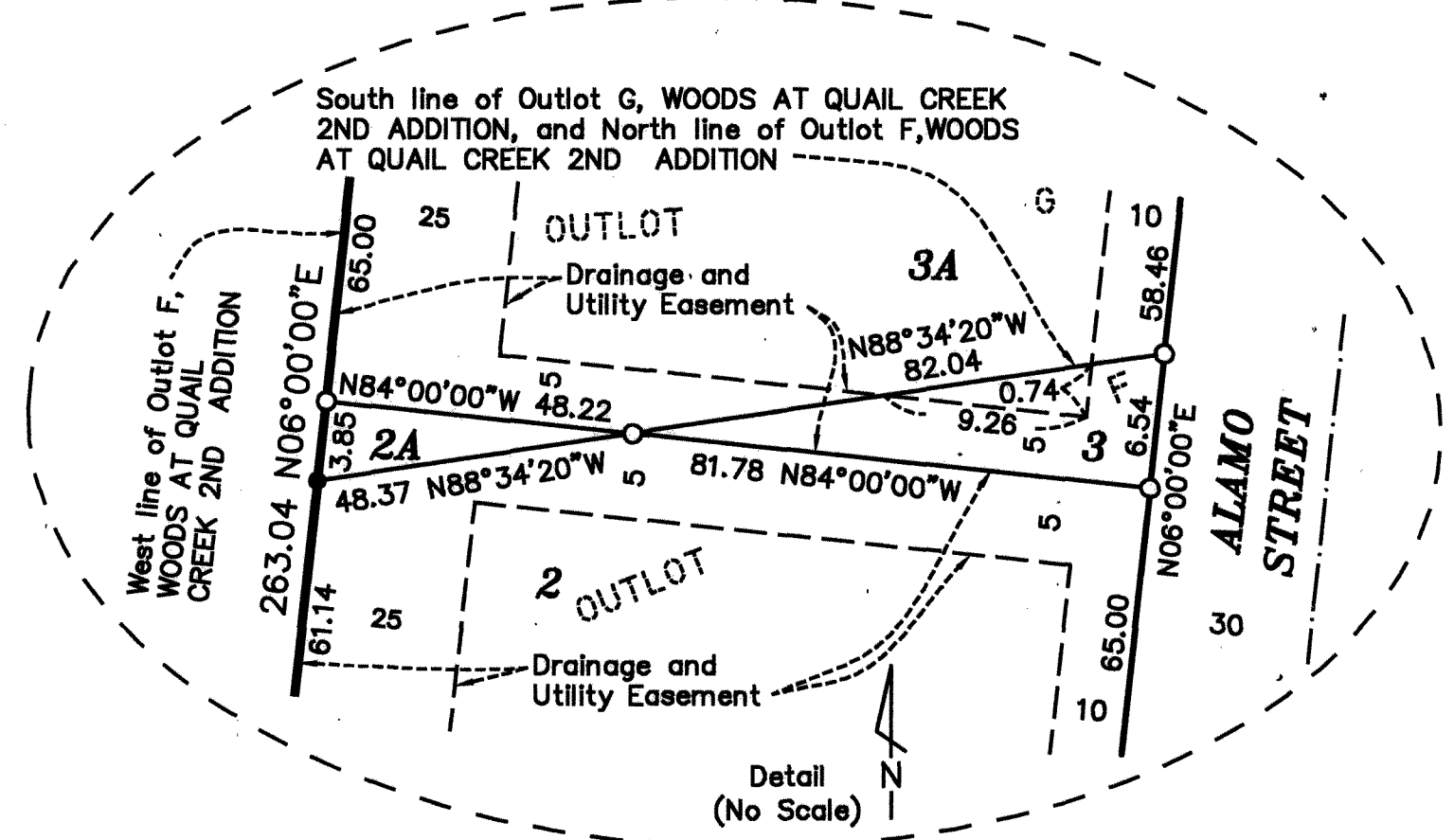
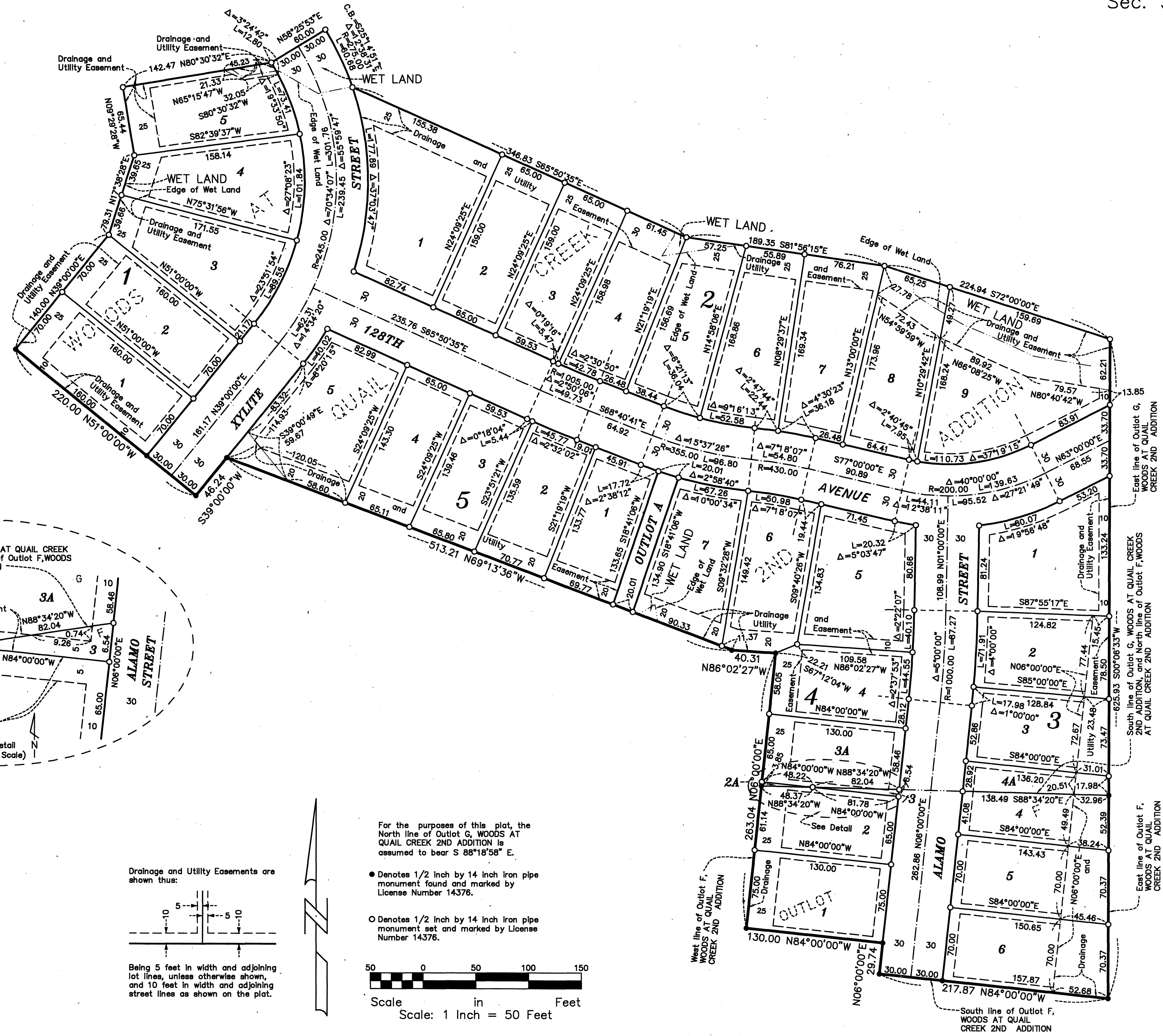
I HEREBY CERTIFY THAT THE CURRENT AND DELINQUENT TAXES ON THE LANDS DESCRIBED WITHIN ARE PAID AND THE TRANSFER IS ENTERED
June 24 2014
[Signature]
DEPUTY PROPERTY TAX ADMINISTRATOR

HEDLUND
PLANNING ENGINEERING SURVEYING
\$5600

WOODS AT QUAIL CREEK 3RD ADDITION

City of Blaine
County of Anoka
Sec. 3, T. 31, R. 23

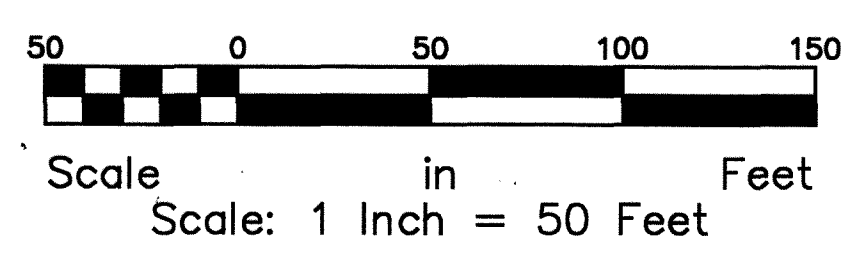
INSET A



Drainage and Utility Easements are shown thus:

Being 5 feet in width and adjoining lot lines, unless otherwise shown, and 10 feet in width and adjoining street lines as shown on the plat.

- Denotes 1/2 inch by 14 inch iron pipe monument found and marked by License Number 14376.
- Denotes 1/2 inch by 14 inch iron pipe monument set and marked by License Number 14376.



HEDLUND
PLANNING ENGINEERING SURVEYING