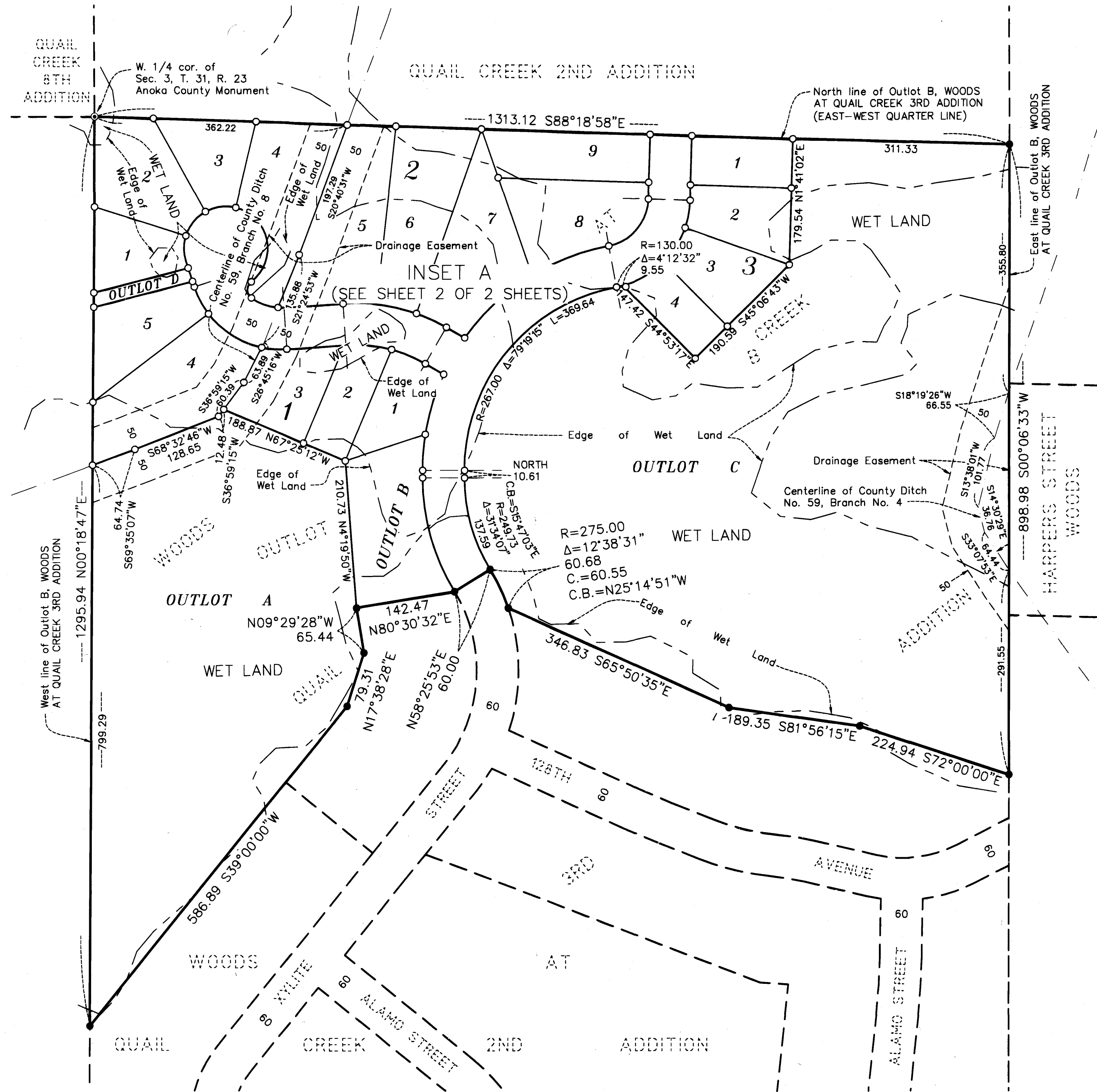


WOODS AT QUAIL CREEK 4TH ADDITION

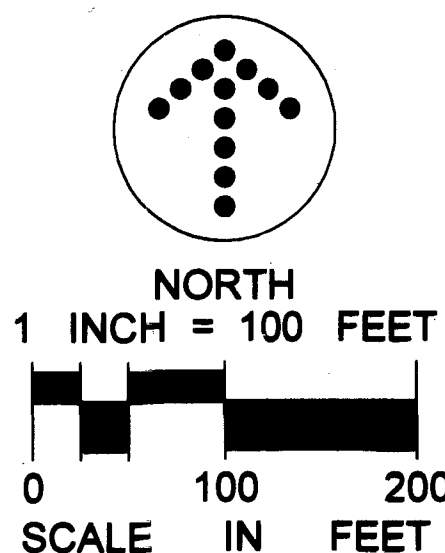
Bk 79 of Abet Page 41
2/15/16 215799.00

City of Blaine
County of Anoka
Sec. 3, T. 31, R. 23



- ⊙ DENOTES CAST IRON MONUMENT.
- DENOTES 1/2 INCH BY 14 INCH IRON PIPE MONUMENT FOUND AND MARKED BY LICENSE NO. 14376.
- DENOTES 1/2 INCH BY 14 INCH IRON PIPE MONUMENT SET AND MARKED BY LICENSE NO. 48176.

FOR THE PURPOSES OF THIS PLAT, THE NORTH LINE OF OUTLOT B, WOODS AT QUAIL CREEK 3RD ADDITION IS ASSUMED TO BEAR S88°18'58"E.



KNOW ALL PERSONS BY THESE PRESENTS: That MG Main Street Properties, LLP, a Minnesota limited liability partnership, owner of the following described property:

Outlot B, WOODS AT QUAIL CREEK 3RD ADDITION, according to the record plat thereof.

Has caused the same to be surveyed and platted as WOODS AT QUAIL CREEK 4TH ADDITION and does hereby dedicate to the public for public use the public ways and the drainage and utility easements as created by this plat.

In witness whereof said MG Main Street Properties, LLP, a Minnesota limited liability partnership, has caused these presents to be signed by its proper partner this 10th day of November, 2016.

MG MAIN STREET PROPERTIES, LLP

Mark D. Gagnon
Mark D. Gagnon as Managing Partner

STATE OF MINNESOTA
COUNTY OF Anoka

This instrument was acknowledged before me this 10th day of November, 2016 by MARK D Gagnon as Managing Partner of MG Main Street Properties, LLP, a Minnesota limited liability partnership, on behalf of the partnership.

Janet R. Thomas
Janet R. Thomas

Notary Public, Minnesota
My Commission Expires 1-31-2020

I Eric B. Lindgren do hereby certify that this plat was prepared by me or under my direct supervision; that I am a duly Licensed Land Surveyor in the State of Minnesota; that this plat is a correct representation of the boundary survey; that all mathematical data and labels are correctly designated on this plat; that all monuments depicted on this plat have been, or will be correctly set within one year; that all water boundaries and wet lands, as defined in Minnesota Statutes, Section 505.01, Subd. 3, as of the date of this certificate are shown and labeled on this plat; and all public ways are shown and labeled on this plat.

Dated this 4th day of October, 2016.

Eric B. Lindgren
Eric B. Lindgren

Eric B. Lindgren, Licensed Land Surveyor
Minnesota License No. 48176

STATE OF MINNESOTA
COUNTY OF DAKOTA

This instrument was acknowledged before me this 4th day of October, 2016 by Eric B. Lindgren.

Janet R. Thomas
Janet R. Thomas
Notary Public, Minnesota
My Commission Expires 01/31/2017

CITY COUNCIL, CITY OF BLAINE, MINNESOTA

This plat of WOODS AT QUAIL CREEK 4TH ADDITION was approved and accepted by the City Council of the City of Blaine, Minnesota at a regular meeting thereof held this 14th day of July, 2016 and said plat is in compliance with the provisions of Minnesota Statutes, Section 505.03, Subd. 2.

CITY COUNCIL, CITY OF BLAINE, MINNESOTA

By: [Signature] Mayor

By: [Signature] Clerk

ANOKA COUNTY SURVEYOR

I hereby certify that in accordance with Minnesota Statutes, Section 505.021, Subd. 11, this plat has been reviewed and approved this 15th day of December, 2016.

By: Larry D. Holium by Charles J. Lutzen, Deputy
Larry D. Holium
Anoka County Surveyor

COUNTY AUDITOR/TREASURER

Pursuant to Minnesota Statutes, Section 505.021, Subd. 9, taxes payable in the year 2016 on the land hereinbefore described have been paid. Also, pursuant to Minnesota Statutes, Section 272.12, there are no delinquent taxes and transfer entered this 15th day of December, 2016.

Jonell M. Sawyer
Jonell M. Sawyer
Property Tax Administrator

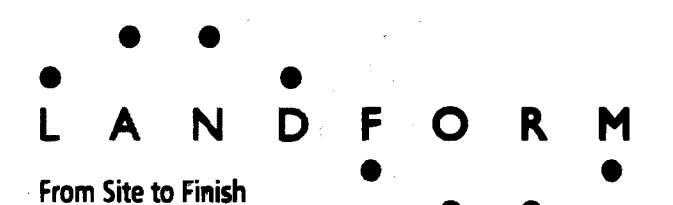
By: [Signature] Deputy

COUNTY RECORDER/REGISTRAR OF TITLES
COUNTY OF ANOKA, STATE OF MINNESOTA

I hereby certify that this plat of WOODS AT QUAIL CREEK 4TH ADDITION was filed in the office of the County Recorder/Registrar of Titles for public record on this 15 day of December, 2016, at 7:24 o'clock A.M. and was duly recorded in Book 79 of MSR Page 41, as Document Number 215799.001

Jonell M. Sawyer
Jonell M. Sawyer
County Recorder/Registrar of Titles

By: [Signature] Deputy

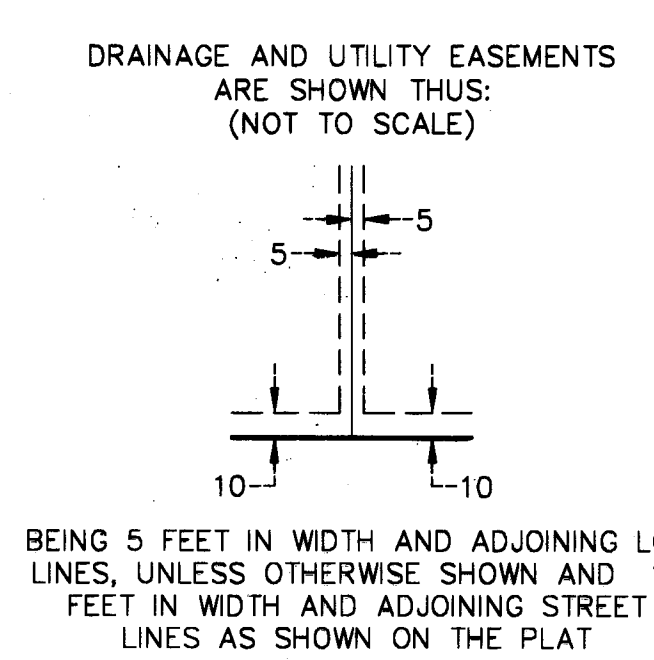
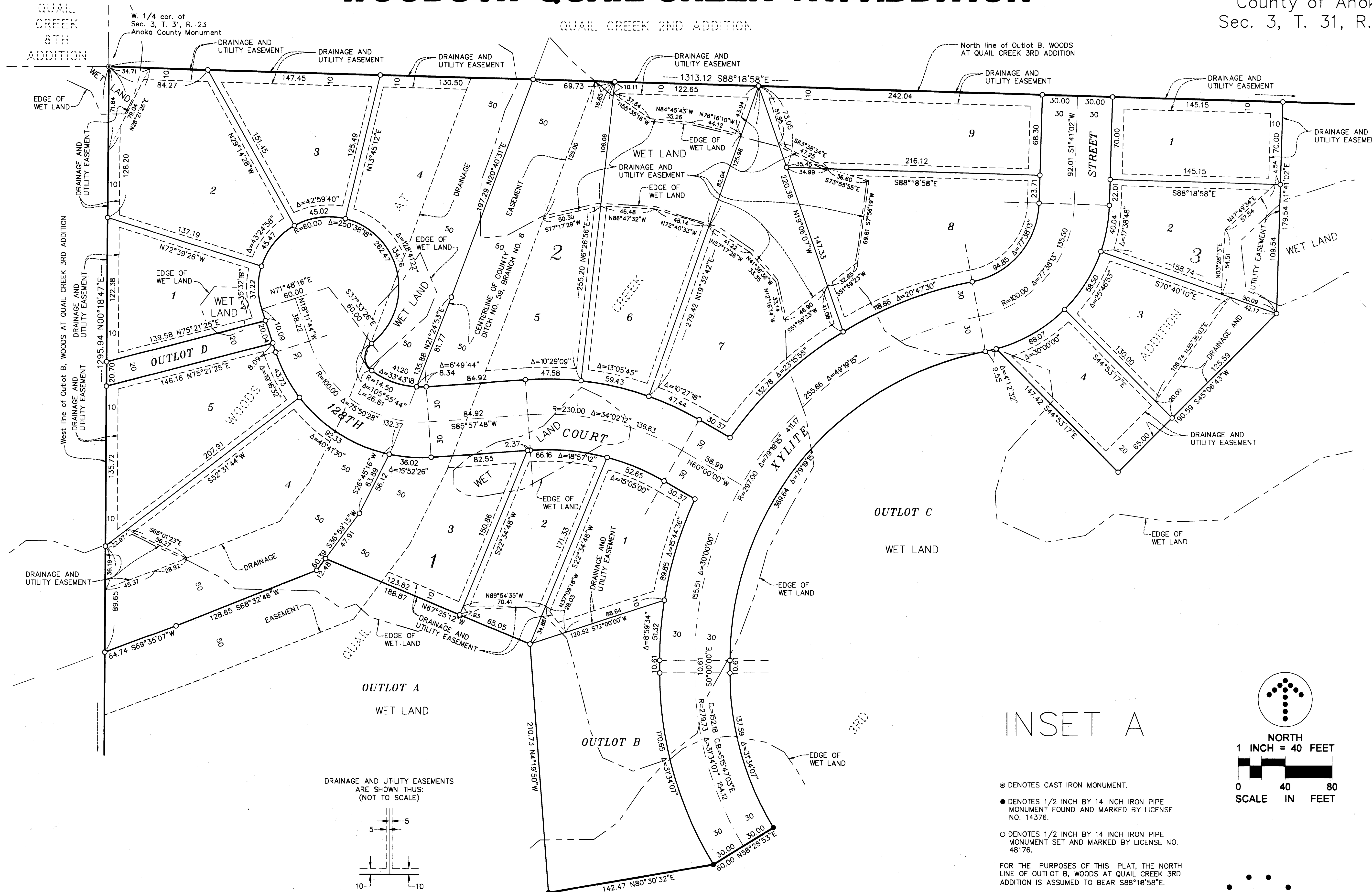


\$ 56

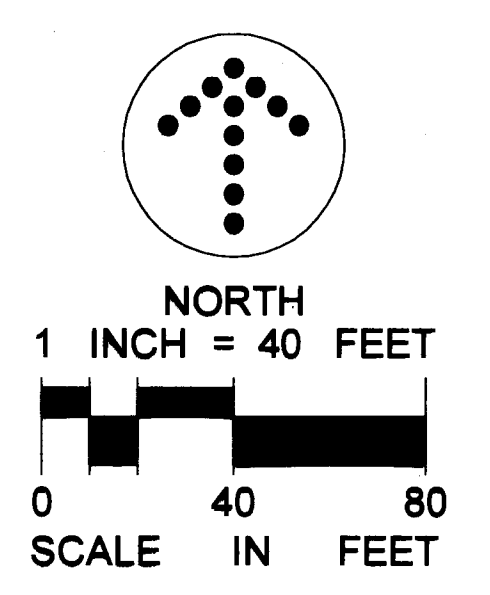
WOODS AT QUAIL CREEK 4TH ADDITION

Blk 79 of Abt page 41
12/15/16 2157 799.001

City of Blaine
County of Anoka
Sec. 3, T. 31, R. 23



INSET A



- DENOTES CAST IRON MONUMENT.
 - DENOTES 1/2 INCH BY 14 INCH IRON PIPE MONUMENT FOUND AND MARKED BY LICENSE NO. 14376.
 - DENOTES 1/2 INCH BY 14 INCH IRON PIPE MONUMENT SET AND MARKED BY LICENSE NO. 48176.
- FOR THE PURPOSES OF THIS PLAT, THE NORTH LINE OF OUTLOT B, WOODS AT QUAIL CREEK 3RD ADDITION IS ASSUMED TO BEAR $\text{S}88^{\circ}18'58''\text{E}$.

