

# WOODS EDGE 2ND ADDITION

CITY OF LINO LAKES  
COUNTY OF ANOKA  
SEC. 17, T. 31, R. 22  
Book 80 of Abst Page 6

KNOW ALL PERSONS BY THESE PRESENTS: That D.R. Horton, Inc.-Minnesota, a Delaware corporation, owner of the following described property:

Outlot E, Outlot F and Outlot G, WOODS EDGE, according to the recorded plat thereof, Anoka County, Minnesota.

Has caused the same to be surveyed and platted as WOODS EDGE 2ND ADDITION and does hereby dedicate to the public for public use the drainage and utility easements as shown on this plat.

In witness whereof said D.R. Horton, Inc.-Minnesota, a Delaware corporation, has caused these presents to be signed by its proper officer this 3<sup>rd</sup> day of May, 2017.

D.R. HORTON, INC.-MINNESOTA

By [Signature]  
Its Vice President

STATE OF MINNESOTA  
COUNTY OF Dakota  
This instrument was acknowledged before me this 3<sup>rd</sup> day of May, 2017 by James R Skittel its Vice President of D.R. Horton, Inc.-Minnesota, a Delaware corporation, on behalf of the corporation.

Jada Greenwaldt Jada Greenwaldt  
Notary Public, Dakota County, Minnesota  
My Commission Expires January 31, 2021

I Craig W. Morse do hereby certify that this plat was prepared by me or under my direct supervision; that I am a duly Licensed Land Surveyor in the State of Minnesota; that this plat is a correct representation of the boundary survey; that all mathematical data and labels are correctly designated on this plat; that all monuments depicted on this plat have been, or will be correctly set within one year; that all water boundaries and wet lands, as defined in Minnesota Statutes, Section 505.01, Subd. 3, as of the date of this certificate are shown and labeled on this plat; and all public ways are shown and labeled on this plat.

Dated this 1<sup>st</sup> day of May, 2017.  
[Signature]  
Craig W. Morse, Licensed Land Surveyor  
Minnesota License No. 23021

STATE OF MINNESOTA  
COUNTY OF HENNEPIN  
This instrument was acknowledged before me this 1<sup>st</sup> day of May, 2017 by Craig W. Morse.

[Signature] Shannon Simen  
Notary Public, Carver County, Minnesota  
My Commission Expires January 31, 2018

CITY COUNCIL, CITY OF LINO LAKES, MINNESOTA  
This plat of WOODS EDGE 2ND ADDITION was approved and accepted by the City Council of the City of Lino Lakes, Minnesota at a regular meeting thereof held this 4<sup>th</sup> day of May, 2017, and said plat is in compliance with the provisions of Minnesota Statutes, Section 505.03, Subd. 2.

CITY COUNCIL, CITY OF LINO LAKES, MINNESOTA  
[Signature] Mayor  
[Signature] Clerk

COUNTY SURVEYOR  
I hereby certify that in accordance with Minnesota Statutes, Section 505.021, Subd. 11, this plat has been reviewed and approved this 15<sup>th</sup> day of May, 2017.

Larry D. Hoium by Charles F. Seigen, Deputy  
Larry D. Hoium, Anoka County Surveyor

COUNTY AUDITOR/TREASURER  
Pursuant to Minnesota Statutes, Section 505.021, Subd. 9, taxes payable in the year 2017 on the land hereinbefore described have been paid. Also, pursuant to Minnesota Statutes, Section 272.12, there are no delinquent taxes and transfer entered this 15<sup>th</sup> day of May, 2017.

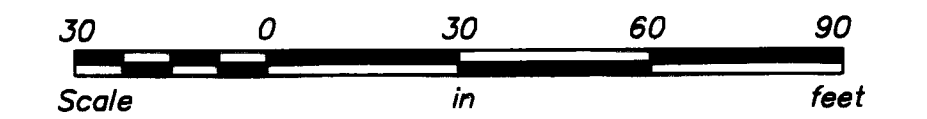
Jonell M Sawyer  
Property Tax Administrator  
By [Signature] Deputy

COUNTY RECORDER/REGISTRAR OF TITLES  
COUNTY OF ANOKA, STATE OF MINNESOTA  
I hereby certify that this plat of WOODS EDGE 2ND ADDITION was filed in the office of the County Recorder/Registrar of Titles for public record on this 15<sup>th</sup> day of May, 2017, at 1:55 clock P.M. and was duly recorded in Book 80 of Abst Page 6 as Document Number 170442.000.

Jonell M. Sawyer  
County Recorder/Registrar of Titles  
By [Signature] Deputy

# WOODS EDGE 2ND ADDITION

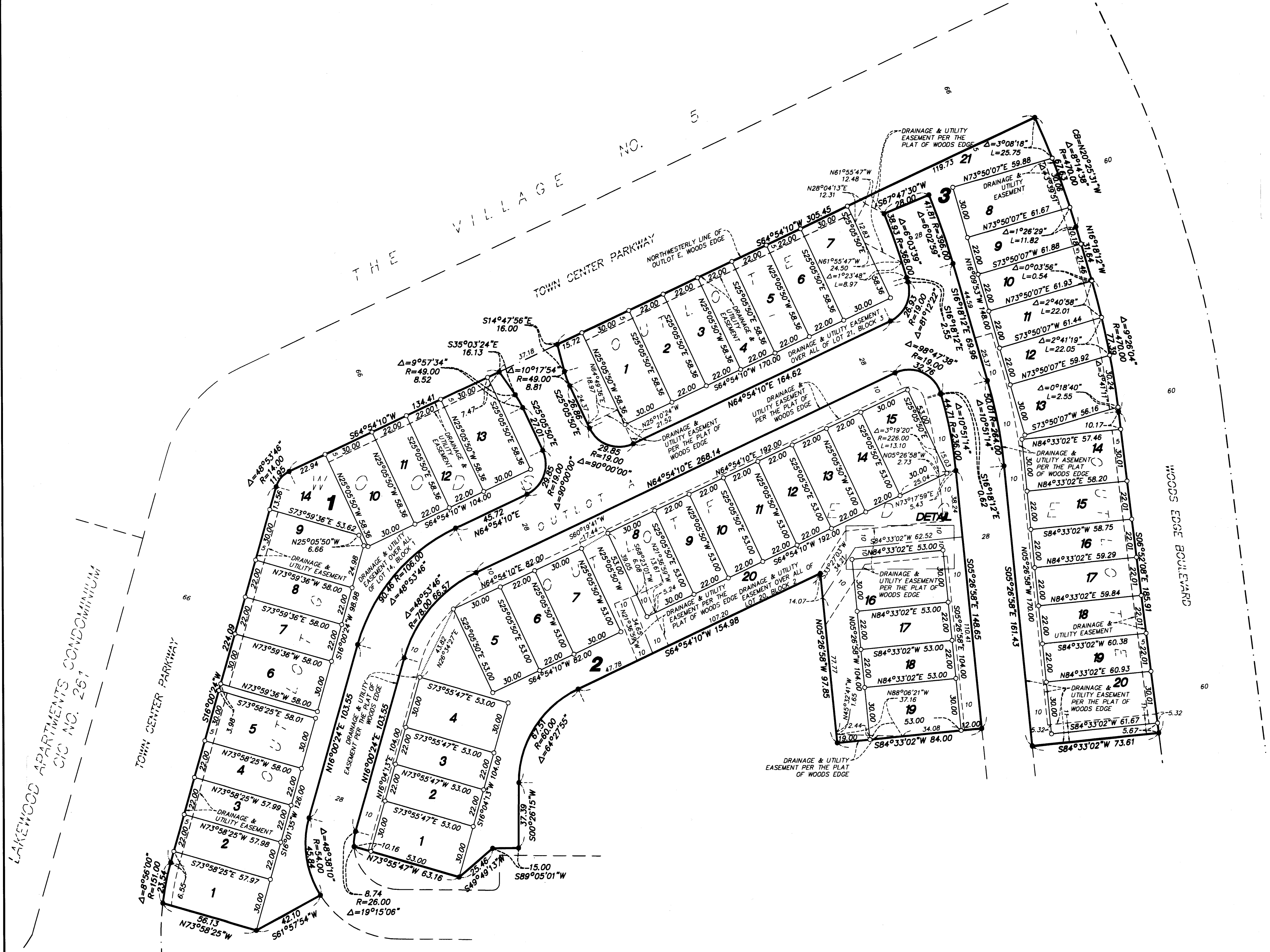
CITY OF LINO LAKES  
COUNTY OF ANOKA  
SEC. 17, T. 31, R. 22  
Book 80 of Abst Page 6



Scale: 1 Inch = 30 Feet

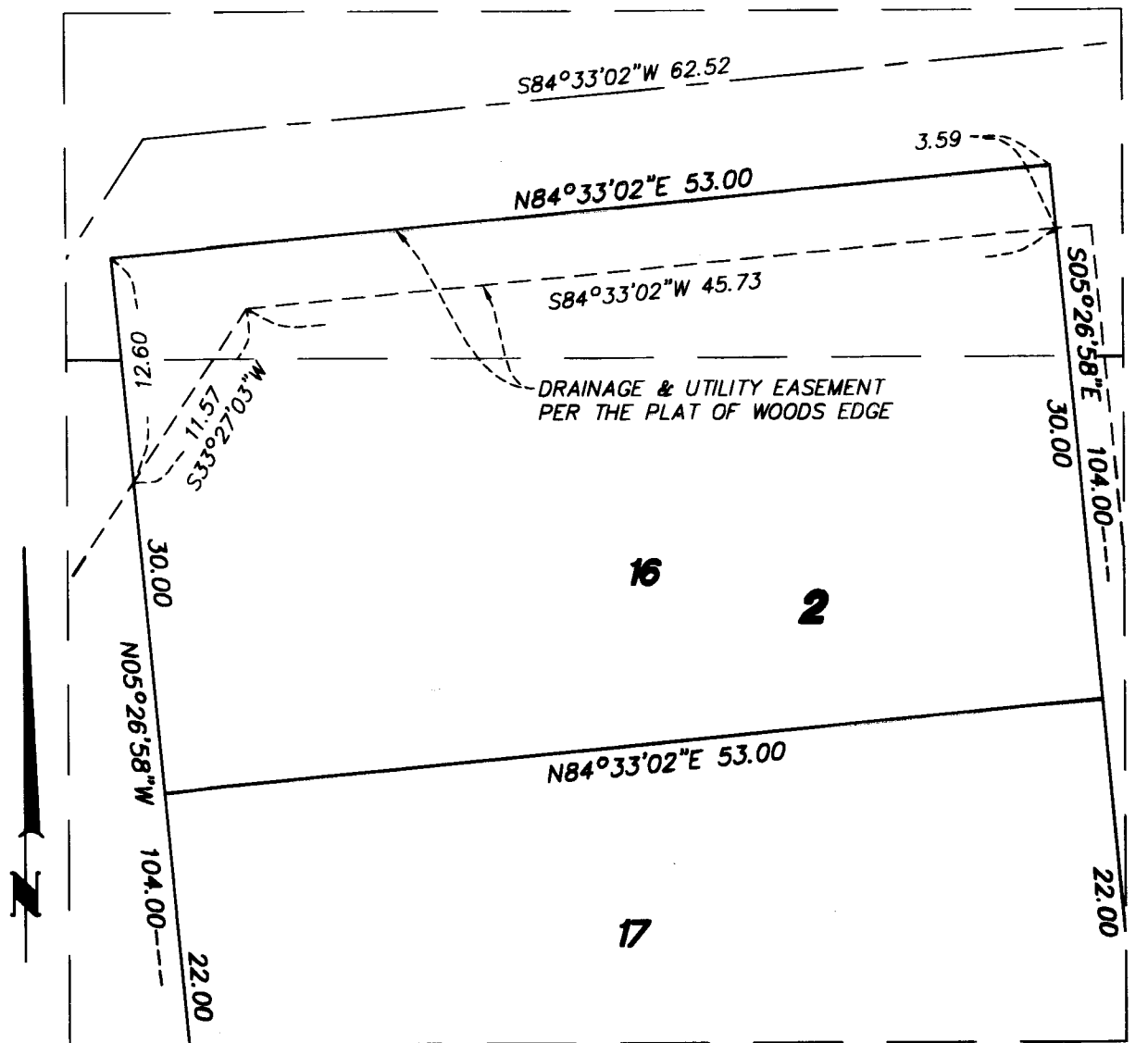
The northwesterly line of Outlot E, WOODS EDGE, is assumed to bear S 64°54'10" W.

- Denotes 1/2 inch by 14 inch iron rebar set and marked by License No. 23021
- Denotes 1/2 inch by 14 inch iron rebar found and marked by License No. 44125, unless otherwise noted



### DETAIL

Scale: 1 inch = 10 feet



LAKELWOOD APARTMENTS CONDOMINIUM  
C/O NO. 261