

# WOODS EDGE

BK 79 Abst Pg 34

CITY OF LINO LAKES  
COUNTY OF ANOKA  
SEC. 17, T. 31, R. 22

KNOW ALL PERSONS BY THESE PRESENTS: That D.R. Horton, Inc.-Minnesota, a Delaware corporation, owner of the following described property:

Outlot B and Outlot D, THE VILLAGE NO. 3, according to the recorded plat thereof, Anoka County, Minnesota.

Has caused the same to be surveyed and platted as **WOODS EDGE** and does hereby dedicate to the public for public use the drainage and utility easements as shown on this plat.

In witness whereof said D.R. Horton, Inc.-Minnesota, a Delaware corporation, has caused these presents to be signed by its proper officer this 6<sup>th</sup> day of October, 2016.

D.R. HORTON, INC.-MINNESOTA

By [Signature]  
its Vice President

STATE OF MINNESOTA  
COUNTY OF Dakota

This instrument was acknowledged before me this 10<sup>th</sup> day of October, 2016 by James Slaikeu its Vice President of D.R. Horton, Inc.-Minnesota, a Delaware corporation, on behalf of the corporation.

Jada Greenwaldt  
Notary Public, Dakota County, Minnesota  
My Commission Expires 1.31.21

Jada Greenwaldt

I Craig W. Morse do hereby certify that this plat was prepared by me or under my direct supervision; that I am a duly Licensed Land Surveyor in the State of Minnesota; that this plat is a correct representation of the boundary survey; that all mathematical data and labels are correctly designated on this plat; that all monuments depicted on this plat have been, or will be correctly set within one year; that all water boundaries and wet lands, as defined in Minnesota Statutes, Section 505.01, Subd. 3, as of the date of this certificate are shown and labeled on this plat; and all public ways are shown and labeled on this plat.

Dated this 5<sup>th</sup> day of OCTOBER, 2016

[Signature]  
Craig W. Morse, Licensed Land Surveyor  
Minnesota License No. 23021

STATE OF MINNESOTA  
COUNTY OF HENNEPIN

This instrument was acknowledged before me this 5<sup>th</sup> day of October, 2016 by Craig W. Morse.

[Signature]  
Notary Public, Carver County, Minnesota  
My Commission Expires January 31, 2018

Shannon Sinnen

CITY COUNCIL, CITY OF LINO LAKES, MINNESOTA

This plat of **WOODS EDGE** was approved and accepted by the City Council of the City of Lino Lakes Minnesota at a regular meeting thereof held this 12<sup>th</sup> day of September, 2016, and said plat is in compliance with the provisions of Minnesota Statutes, Section 505.03, Subd. 2.

CITY COUNCIL, CITY OF LINO LAKES, MINNESOTA

[Signature] Mayor  
[Signature] Clerk

COUNTY SURVEYOR

I hereby certify that in accordance with Minnesota Statutes, Section 505.021, Subd. 11, this plat has been reviewed and approved this 17<sup>th</sup> day of OCTOBER, 2016.

[Signature]  
Larry D. Hohum, Anoka County Surveyor

COUNTY AUDITOR/TREASURER

Pursuant to Minnesota Statutes, Section 505.021, Subd. 9, taxes payable in the year 2016 on the land hereinbefore described have been paid. Also, pursuant to Minnesota Statutes, Section 272.12, there are no delinquent taxes and transfer entered this 17<sup>th</sup> day of October, 2016.

[Signature]  
Property Tax Administrator  
By [Signature] Deputy

COUNTY RECORDER/REGISTRAR OF TITLES  
COUNTY OF ANOKA, STATE OF MINNESOTA

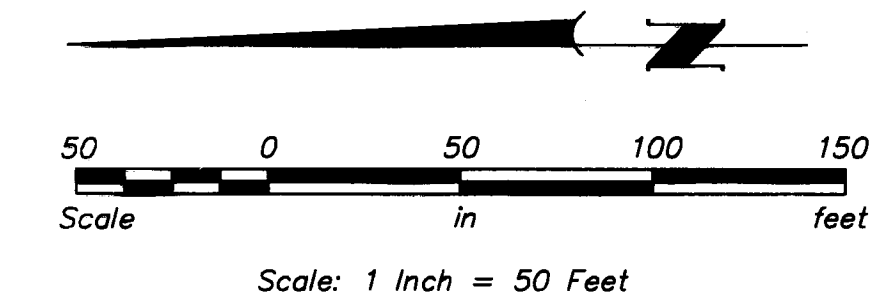
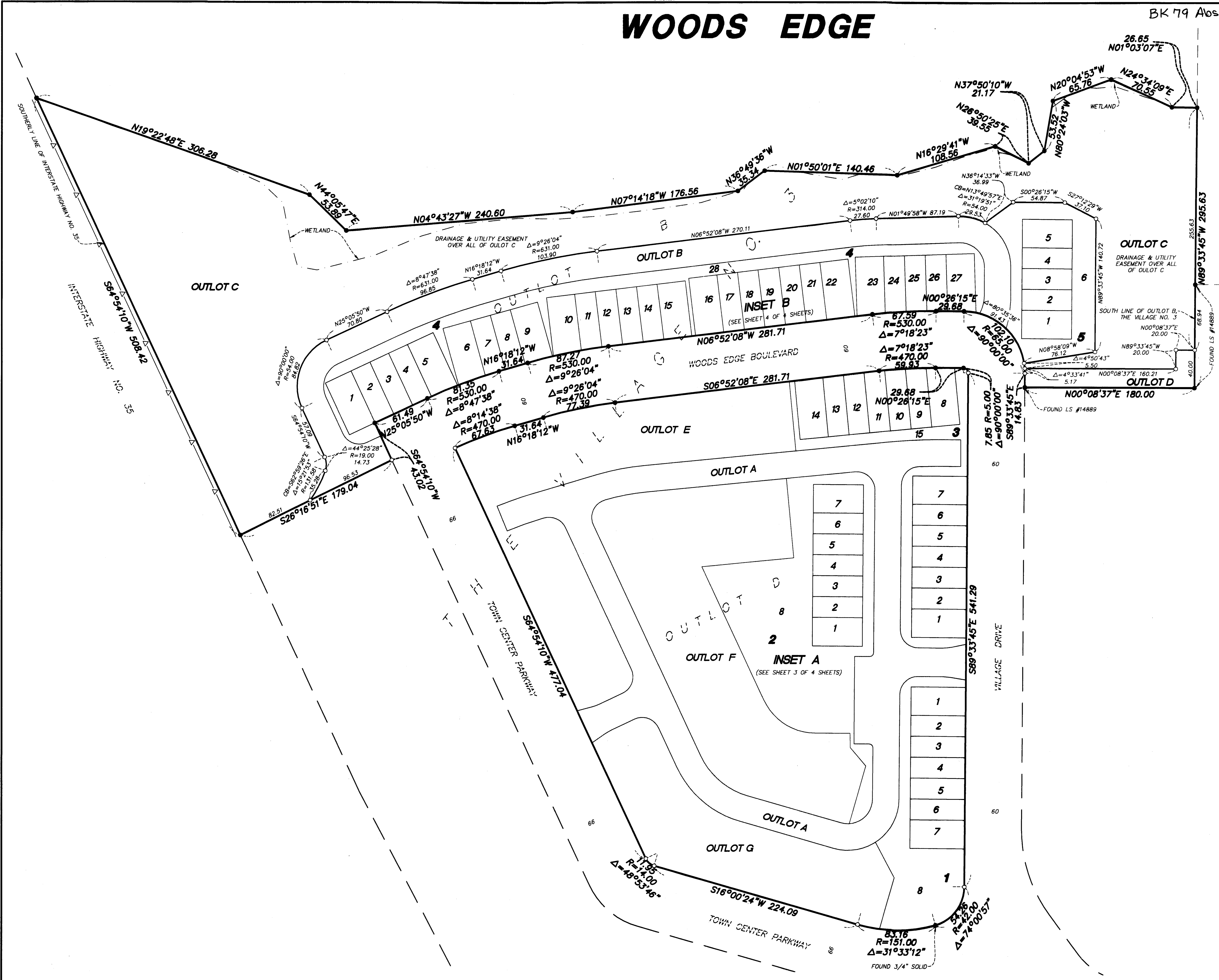
I hereby certify that this plat of **WOODS EDGE** was filed in the office of the County Recorder/Registrar of Titles for public record on this 17<sup>th</sup> day of October, 2016, at 12:07 o'clock P.M. and was duly recorded in Book 79 Abst Page 34, as Document Number 2152082.001.

[Signature]  
County Recorder/Registrar of Titles  
By [Signature] Deputy

\$ 56.<sup>00</sup>

# WOODS EDGE

BK 79 Abst Pg 34 CITY OF LINO LAKES  
COUNTY OF ANOKA  
SEC. 17, T. 31, R. 22



The south line of Outlot B, THE VILLAGE NO. 3, is assumed to bear N 89°33'45\" W.

- Denotes 1/2 inch by 14 inch iron rebar set and marked by License No. 23021
- Denotes 1/2 inch by 14 inch iron rebar found and marked by License No. 44125, unless otherwise noted

Wetlands were delineated by Westwood Professional Services in April 2016

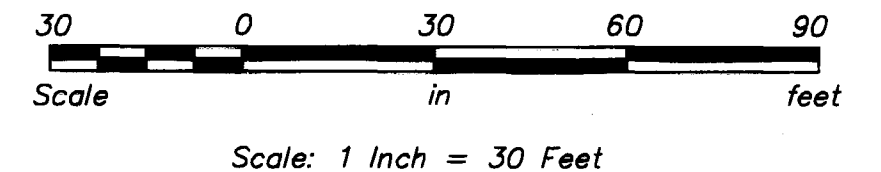
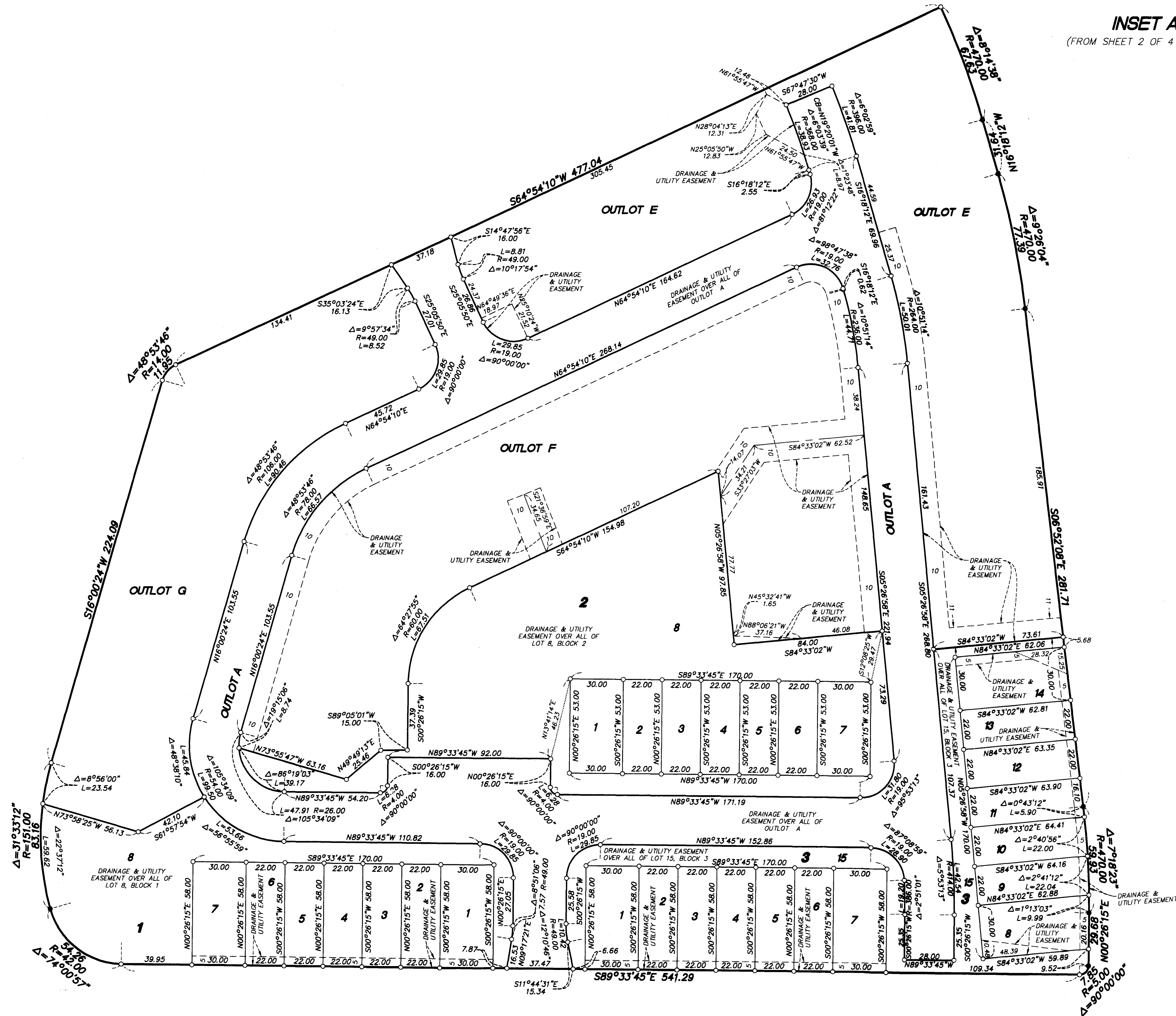
△ Denotes Controlled Access per the plat of THE VILLAGE NO. 3

# WOODS EDGE

BK 79 Abst Pg 34

CITY OF LINO LAKES  
COUNTY OF ANOKA  
SEC. 17, T. 31, R. 22

**INSET A**  
(FROM SHEET 2 OF 4 SHEETS)



The south line of Outlot B, THE VILLAGE NO. 3, is assumed to bear N 89°33'45" W.

- Denotes 1/2 inch by 14 inch iron rebar set and marked by License No. 23021
- Denotes 1/2 inch by 14 inch iron rebar found and marked by License No. 44125, unless otherwise noted

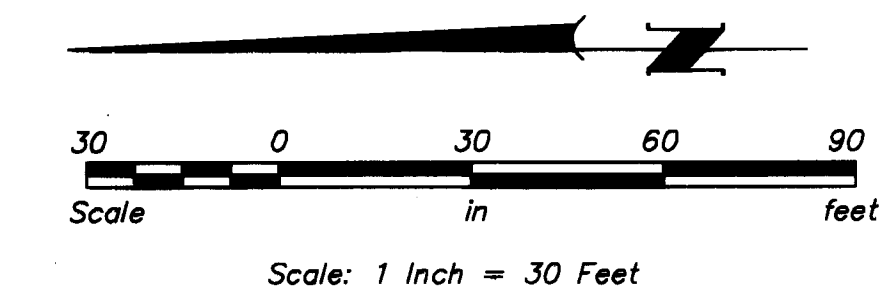
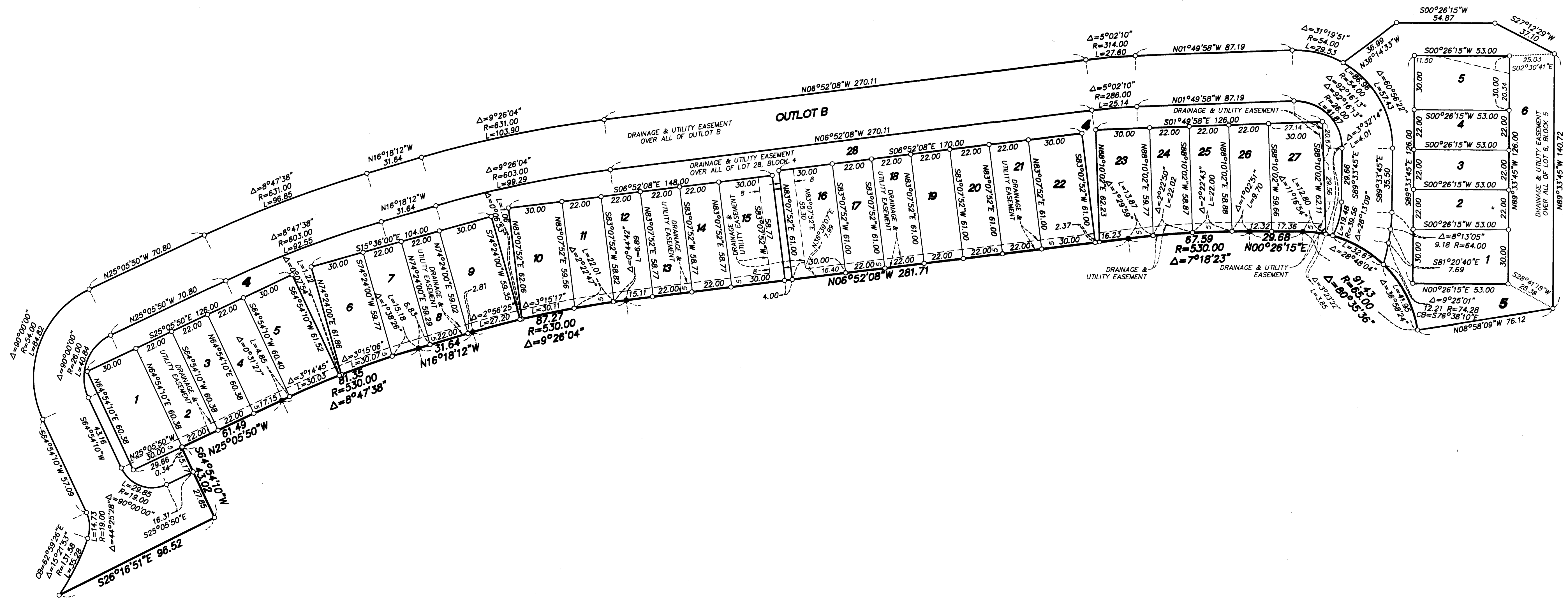
# WOODS EDGE

BK 79 Abst Pg 34

CITY OF LINO LAKES  
COUNTY OF ANOKA  
SEC. 17, T. 31, R. 22

## INSET B

(FROM SHEET 2 OF 4 SHEETS)



The south line of Outlot B, THE VILLAGE NO. 3, is assumed to bear N 89°33'45\"/>

- Denotes 1/2 inch by 14 inch iron rebar set and marked by License No. 23021
- Denotes 1/2 inch by 14 inch iron rebar found and marked by License No. 44125, unless otherwise noted