

WOODS OF BRIARDALE

CITY OF BLAINE - ANOKA COUNTY, MN

KNOW ALL MEN BY THESE PRESENTS that Bartlesville Wesleyan College, an Oklahoma Corporation, owners and proprietors, and Pinetree Builders, Inc., a Minnesota Corporation, and Briar Homes, Inc., a Minnesota Corporation, contract purchasers of the following described property situated in the County of Anoka and the State of Minnesota:

The East 800.00 feet of the Northwest Quarter of the Northwest Quarter of Section 20, Township 31 North, Range 23 West, of the 4th Principal Meridian, Anoka County, Minnesota;

have caused the same to be surveyed and platted as WOODS OF BRIARDALE and do hereby donate and dedicate to the public for public use forever the streets, avenues, walkway and drainage and utility easements as shown on the plat. In witness whereof said Bartlesville Wesleyan College has caused these presents to be signed by its proper officers this 9th day of December, 1977. In witness whereof said Pinetree Builders, Inc. has caused these presents to be signed by its proper officer this 15th day of December, 1977. In witness whereof said Briar Homes, Inc. has caused these presents to be signed by its proper officer, its seal to be hereunto affixed, this 15th day of December, 1977.

SIGNED:

BARTLESVILLE WESLEYAN COLLEGE
John M. Snook
 John M. Snook, President
Harold R. Gunders
 Harold R. Gunders, Vice-President

PINETREE BUILDERS, INC.
Edwin A. Dropps, Jr.
 Edwin A. Dropps, Jr., President

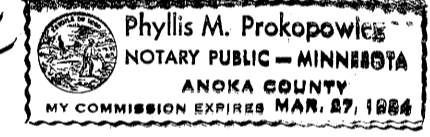
BRIAR HOMES, INC.
Richard S. Carlson
 Richard S. Carlson, President

State of Oklahoma
County of Washington
The foregoing instrument was acknowledged before me this 9th day of December, 1977, by John M. Snook, President and Harold R. Gunders, Vice-President of Bartlesville Wesleyan College, an Oklahoma Corporation, on behalf of the corporation.

May M. Gunders
Notary Public Wash. County, OK.
My Commission Expires 11-2-81

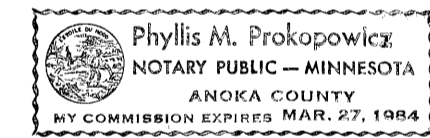
State of Minnesota)
County of Anoka
The foregoing instrument was acknowledged before me this 15th day of December, 1977, by Edwin A. Dropps, Jr., President of Pinetree Builders, Inc. a Minnesota Corporation on behalf of the corporation.

Phyllis M. Prokopowicz
Notary Public Anoka County, Minnesota
My Commission Expires Mar. 27, 1984



State of Minnesota)
County of Anoka
The foregoing instrument was acknowledged before me this 15th day of December, 1977, by Richard S. Carlson, President of Briar Homes, Inc., a Minnesota Corporation on behalf of the corporation.

Phyllis M. Prokopowicz
Notary Public Anoka County, Minnesota
My Commission Expires Mar. 27, 1984

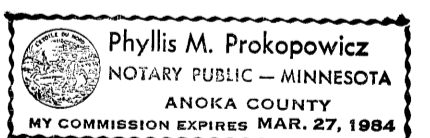


I, Ron Murphy, hereby certify that I have surveyed and platted the property described in the dedication of this plat as WOODS OF BRIARDALE, that this plat is a correct representation of said survey; that all distances are correctly shown on the plat in figures denoting feet and hundredths of a foot; that all monuments have been correctly placed in the ground as shown; that the outside boundary lines are correctly designated on the plat; and that there are no wet lands, easements or public highways other than as shown thereon.

Ron Murphy
Minnesota Registration No. 10832

State of Minnesota)
County of Anoka)
The Surveyor's Certificate was subscribed and sworn to before me, a Notary Public, this 28th day of November, 1977.

Phyllis M. Prokopowicz
Notary Public, Anoka County, Minnesota
My Commission Expires Mar. 27, 1984

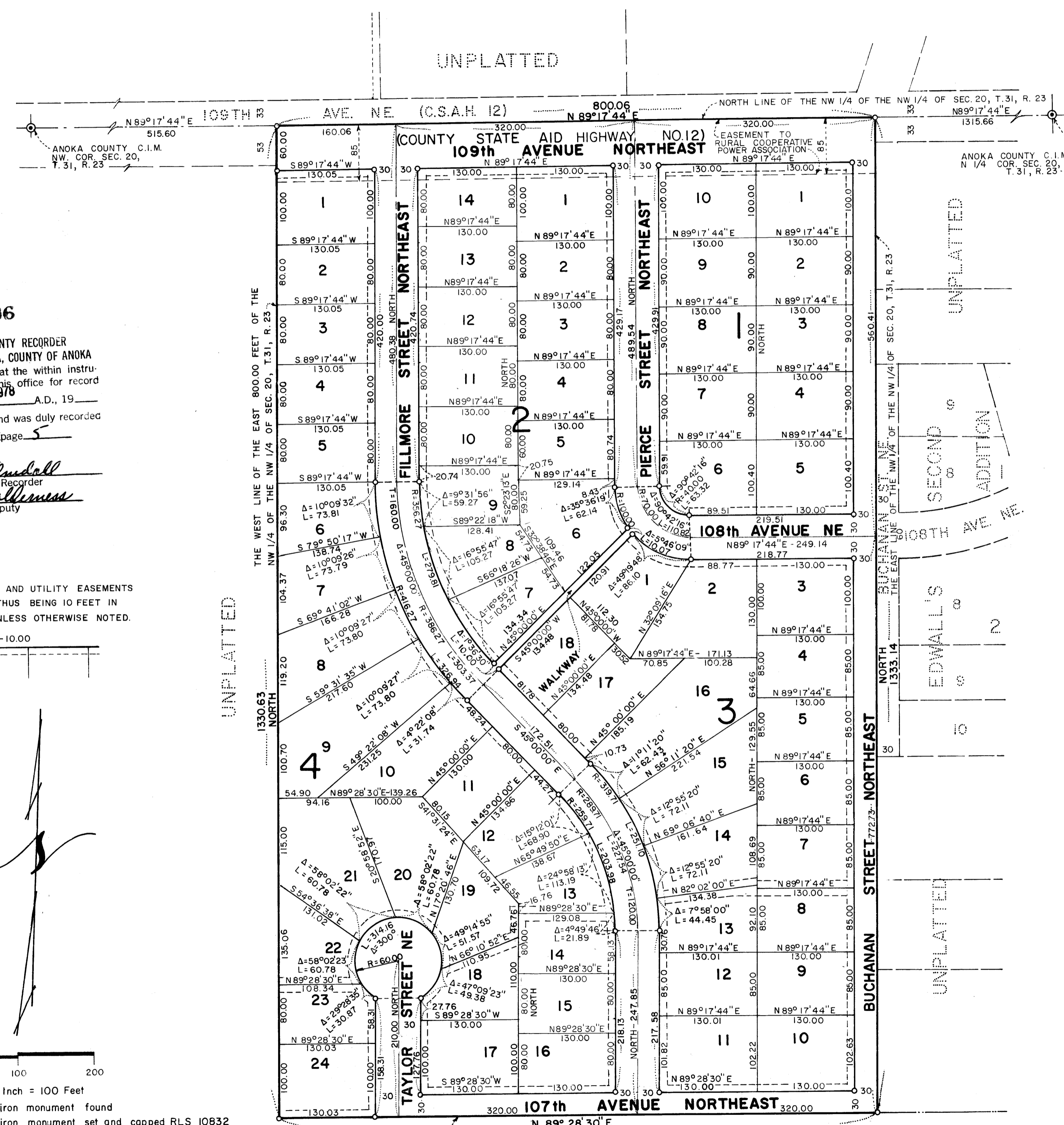


We hereby certify that the City Council of the City of Blaine, Anoka County, Minnesota, duly accepted and approved the annexed plat of WOODS OF BRIARDALE at a regular meeting thereof held this 15th day of December, 1977.

CITY COUNCIL OF BLAINE, MINNESOTA
Gregory Stogarty
 Mayor
Paul Stige
 City Manager

Checked and approved this 1st day of June, 1978.

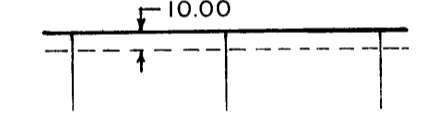
Poland W. Anderson
 Anoka County Surveyor



498206
 OFFICE OF COUNTY RECORDER
 STATE OF MINNESOTA, COUNTY OF ANOKA
 I hereby certify that the within instrument was filed in this office for record on the JUN 1 1978 A.D., 19 8:45 o'clock P.M., and was duly recorded in book 270c page 5

Deed Campbell
 County Recorder
 By *V. E. Hollmann*
 Deputy

DRAINAGE AND UTILITY EASEMENTS SHOWN THUS BEING 10 FEET IN WIDTH UNLESS OTHERWISE NOTED.



Scale 1 Inch = 100 Feet
 • Denotes iron monument found
 o Denotes iron monument set and capped RLS 10832
 Bearings are on an assumed datum

COMSTOCK & DAVIS, INC.
 CONSULTING ENGINEERS & LAND SURVEYORS

"NO DELINQUENT TAXES AND TRANSFER ENTERED"
June 1 1978
Charles R. Lepkura
 Auditor, Anoka County
J.R. Kaminski