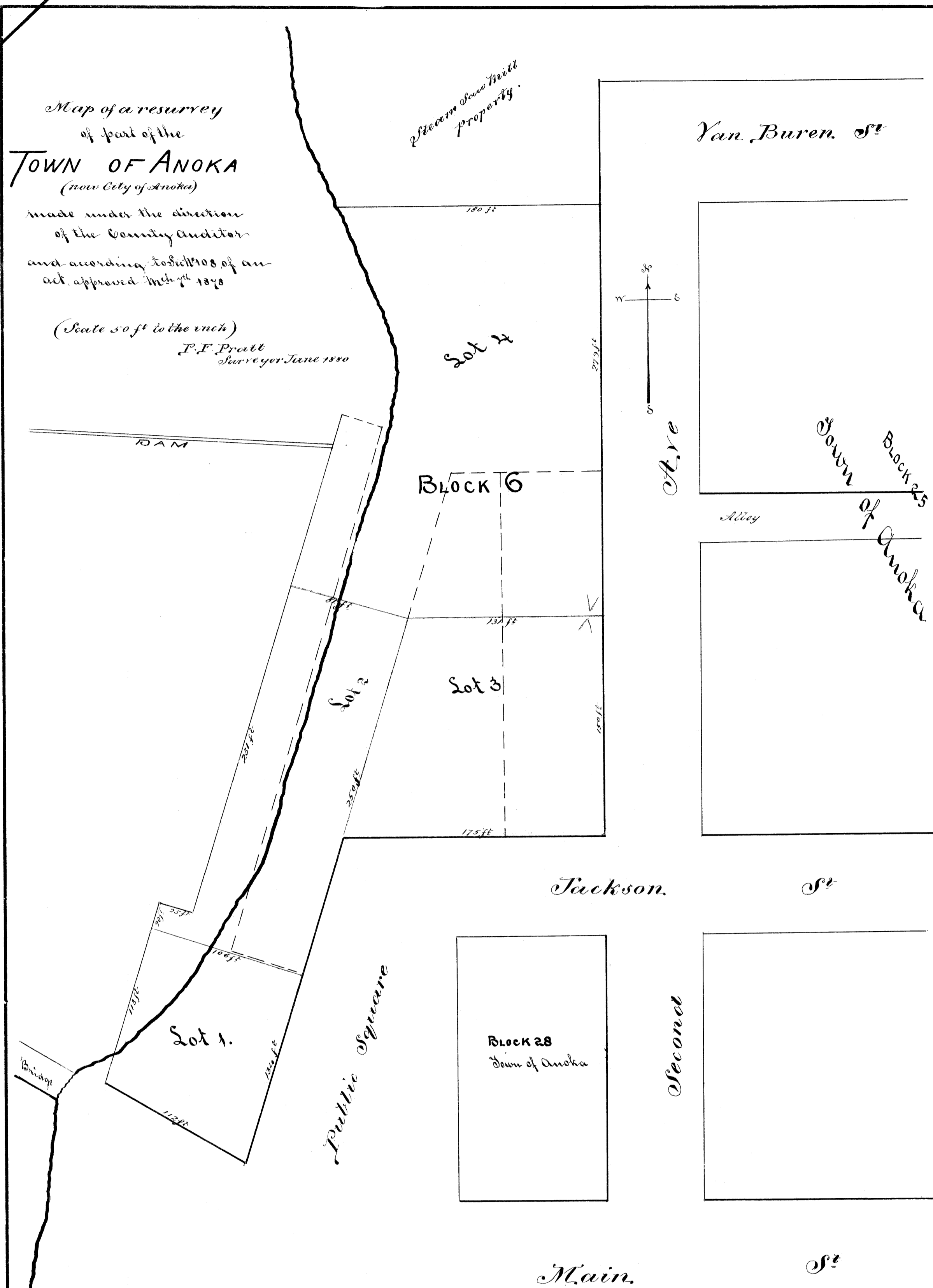


Map of a resurvey of part of the TOWN OF ANOKA (near City of Anoka)

made under the direction of the County Auditor and according to sections of an act approved March 7th 1878

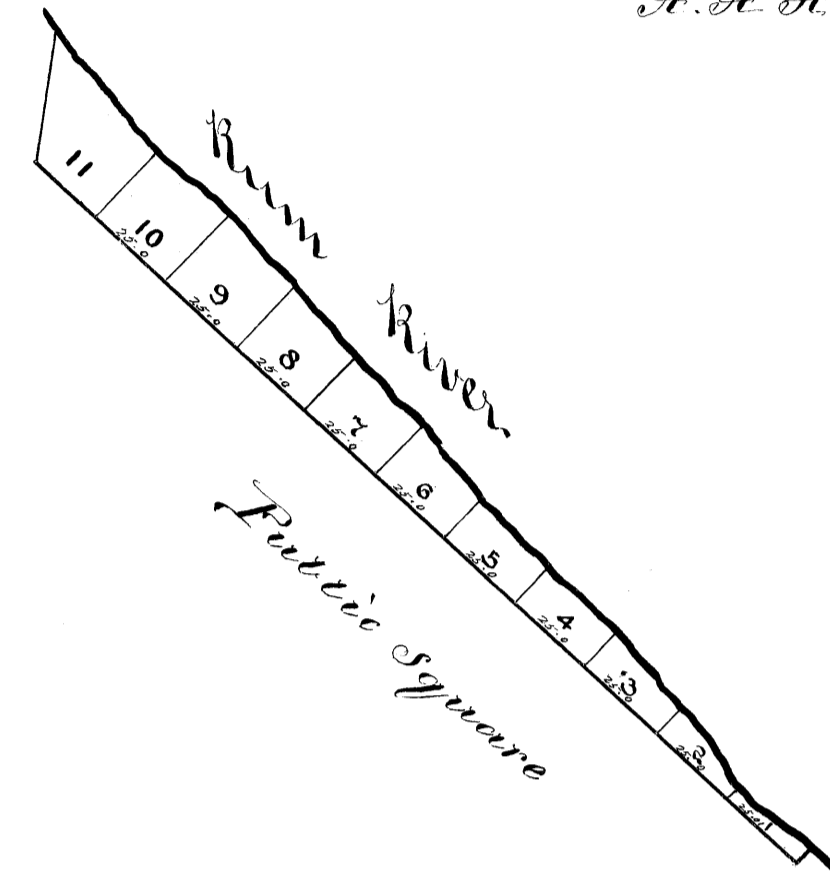
(Scale 50 ft to the inch) P.F. Pratt Surveyor June 1880



SUBDIVISION of Lot 2 Block 4 RESURVEYS-ANOKA.

December 31st 1878

A. A. Allard Surveyor.



Office of Register of Deeds Anoka County Minnesota I hereby certify that this plat is a true and correct copy and transcript of the original plat of 'Subdivision of Lot 2 Block four Resurveys Anoka' as on file and of record in this office

W. Giepatieck Register of Deeds April 1881

Be it known that on this third day of January A.D. 1879 personally appeared G.P. Woodbury proprietor of said Lot (2) two Block (4) four Resurveys of Anoka and acknowledged the plat and survey of the subdivision of said Lot 2 as surveyed drawn and certified by A.A. Allard to be his free act and deed for the uses and purposes by the statute in such case made and provided

A. A. Hilton Register of Deeds Anoka County Minnesota

State of Minnesota County of Anoka I, A.A. Allard the person who surveyed and plotted the annexed plat of the subdivision of Lot (2) Block (4) Resurveys Anoka do hereby certify that the annexed is a true and correct plat of said subdivision as made by me December 31st 1878

A. A. Allard Surveyor

Office of Register of Deeds Anoka County Minnesota I hereby certify that this plat is a true and correct copy and transcript of the original plat of 'Map of a resurvey of part of the Town of Anoka (now City of Anoka) made under the direction of the County Auditor and according to Sec. 10108 of an act approved March 7th 1878' as on file and of record in this office

W. Giepatieck Register of Deeds April 1881

I, H. E. Lippner Auditor of Anoka County Minn. do hereby certify that P.F. Pratt Surveyor of Anoka Co. at my request resurveyed and plotted a part of the Town (now City) of Anoka Minnesota as shown by this map and in pursuance of an act of the Legislature of the State of Minnesota approved July 17th 1878 for the assessment and collection of taxes, H. E. Lippner Auditor of Anoka Co. Minn.

State of Minnesota County of Anoka Be it known that on this 20th day of June A.D. 1880 came personally before me H. E. Lippner Auditor of Anoka County to me known to be the person who executed the above certificate and he acknowledged that he executed the same for the uses and purposes therein expressed. A. A. Hilton Register of Deeds

I hereby certify that this is a true plat of a resurvey of a part of the Town (now City) of Anoka as appears from records in the office of the Register of Deeds for Anoka County Minn. Dated June 22 1880 P.F. Pratt Surveyor of Anoka Co Minn.

State of Minnesota County of Anoka Office of Register of Deeds I hereby certify that the above plat was filed in this office for record this 25th day of June A.D. 1880 and was duly placed of file in Book 20 of said plat. A. A. Hilton Register of Deeds