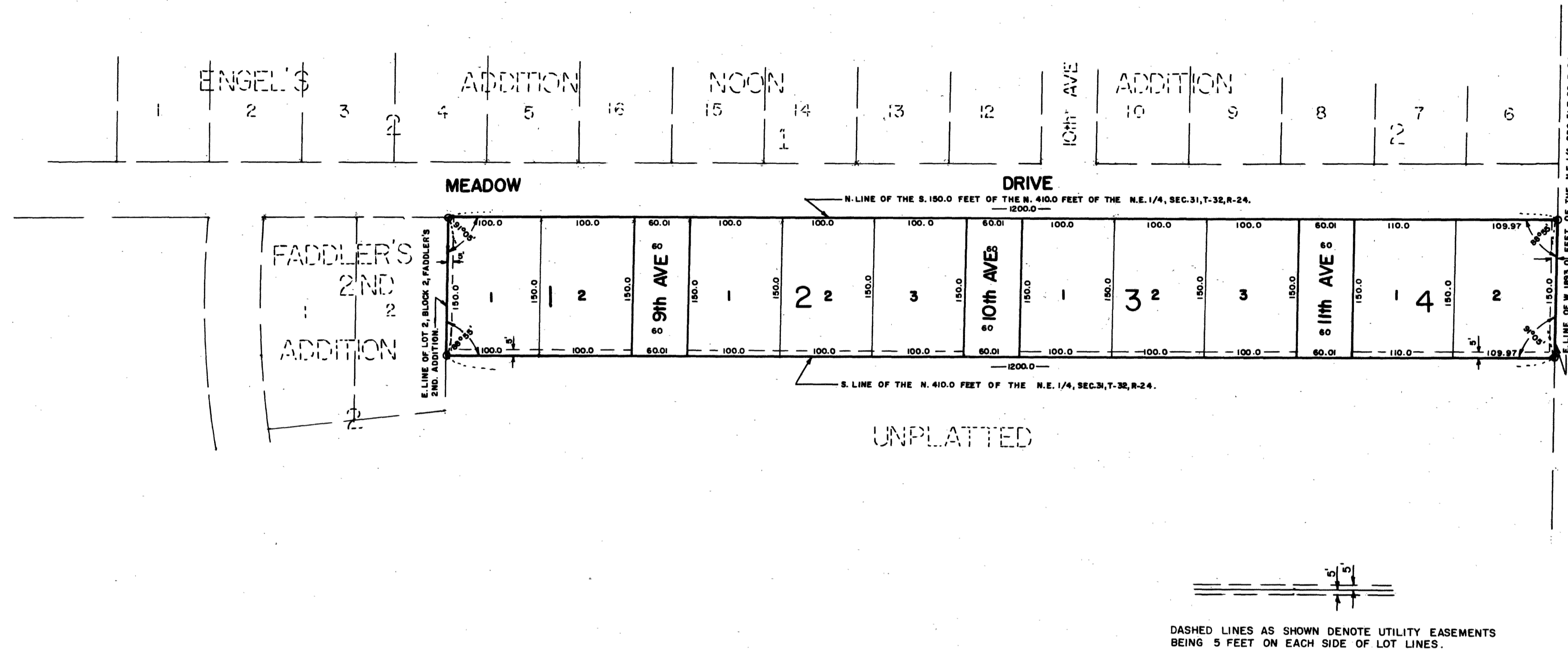


NOON 2ND ADDITION

ANOKA COUNTY, MINNESOTA



F.C. JACKSON
LAND SURVEYOR

SCALE: 1" = 100'
o DENOTES IRON MONUMENT

This plat was approved and accepted by the Board of County Commissioners of the County of Anoka, State of Minnesota at a regular meeting held this 14th day of August A.D. 1963

By Edward L. Smith its Chairman
By Harold W. Johnson County Auditor

The plat of NOON 2nd ADDITION was approved by the Zoning and Planning Commission and by the Town Board of the Township of Grow, Anoka County, Minnesota at a regular meeting held this 19th day of August A.D. 1963

By Leonard Johnson its Chairman
By Sail O. Palm its Clerk

This plat was approved as to form and execution this 19th day of September A.D. 1963

By Robert W. Johnson
Anoka County Attorney

This plat checked and approved this 9th day of September A.D. 1963

By Richard W. Anderson
Anoka County Surveyor

Recommended for approval this 9th day of September A.D. 1963

By Carl E. Lundquist
County Highway Engineer, Anoka County, Minnesota

252489
OFFICE OF REGISTER OF DEEDS
STATE OF MINNESOTA, COUNTY OF ANOKA } ss

I hereby certify that the within instrument was filed in this office for record on the 19th day of SEP 1963 A.D., 1963 at 11:20 o'clock A.M., and was duly recorded in book 27 of Plats page 22

By Stenrode Anderson
Register of Deeds
By Margaret Russell
Deputy

I HEREBY CERTIFY THAT TAXES FOR THE YEAR 1962 ON THE LANDS DESCRIBED WITHIN ARE PAID

By Robert A. Peterson
County Treasurer

TAXES PAID

This 19th day of Sept 1963
By Kenneth Campbell
Auditor, Anoka County, Minn.
By Wanda A. Hall Deputy

Know all men by these presents: That we, Vernon D. Noon and Doris L. Noon, his wife, owners and proprietors of the following described property situate in the County of Anoka, State of Minnesota to-wit: The South 150.0 feet of the North 410.0 feet of the West 1893.0 feet of the Northeast 1/4 of Section 31, Township 32, Range 24 lying East of the East line of Lot 2, Block 2, Faddler's 2nd Addition. Have caused the same to be surveyed and platted as NOON 2nd ADDITION and do hereby donate and dedicate to the public for public use forever the Avenues as shown on the annexed plat. Also subject to Utility easements as shown on the annexed plat. In witness whereof we have hereunto set our hands and seals this 14th day of August A.D. 1963

In the presence of

Signed

Sandra M. Richards and Ellen M. Hill as to Vernon D. Noon
Vernon D. Noon

Sandra M. Richards and Ellen M. Hill as to Doris L. Noon
Doris L. Noon

State of Minnesota) s.s.
County of Anoka

On this 14th day of August A.D. 1963 before me, a Notary Public within and for said County and State, personally appeared Vernon D. Noon and Doris L. Noon, his wife, to me personally known to be the persons described in and who executed the foregoing instrument and they affirm and acknowledge that they executed the same as their own free act and deed.

By Sandra M. Richards
Notary Public, Anoka County, Minnesota

My Commission Expires October 10, 1967

I hereby certify that I have surveyed and platted the land described in the dedication on this plat as NOON 2nd ADDITION, that this plat is a correct representation of said survey, that all distances are correctly shown on said plat in figures denoting feet and decimals of a foot, that the monuments for the guidance of future surveys have been correctly placed in the ground as shown on said plat, that the outside boundaries of the land are correctly designated on said plat, that there are no wet lands or public highways to be designated on said plat other than shown thereon.

State of Minnesota) s.s.
County of Hennepin

Above certificate subscribed and sworn to before me, a Notary Public within and for said County and State on this 3rd day of Aug A.D. 1963

By F.C. Jackson
Surveyor, Minn. Reg. No. 3600

By Ronald C. Jackson
Notary Public, Hennepin County, Minnesota
My Commission Expires March 27, 1968