

CERTIFICATE OF LOCATION OF GOVERNMENT CORNER

County of Anoka

State of Minnesota

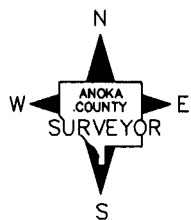
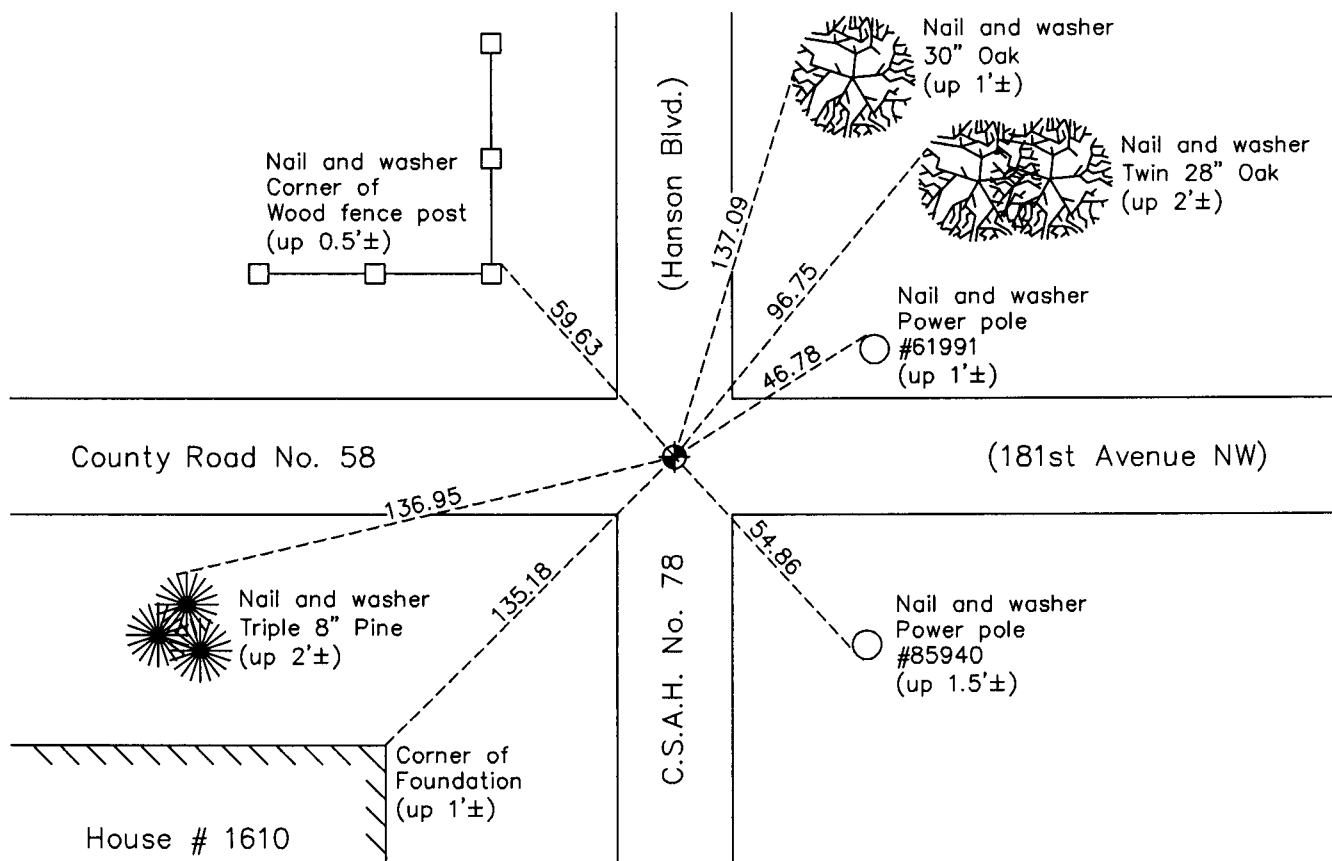
Northwest Corner of Sec. 2 Township 32 Range 24

On the 19th day of September, 1962, the described corner was evidenced by area resurvey

and to perpetuate the location of said corner, at the exact location thereof, a permanent marker was placed consisting of a cast iron monument

AND on the 18th day of January, 2011, said permanent marker was found and the ties
were updated

Updated reference ties are as shown below.



Revision Date

3/15/11

N.A.D. 1983 Coordinates
(1996 Adjustment)

County Project Coordinates	
Northing	195825.3202
Easting	489813.2327
Date	7/25/00

I hereby certify that this United States public land survey monument record is correct and complete to the best of my knowledge and belief.

Larry D. Hoium Date 3/15/11

Larry D. Hoium, Anoka County Surveyor

Minnesota License Number 18165