

CERTIFICATE OF LOCATION OF GOVERNMENT CORNER

County of Anoka

State of Minnesota

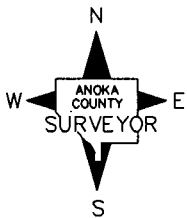
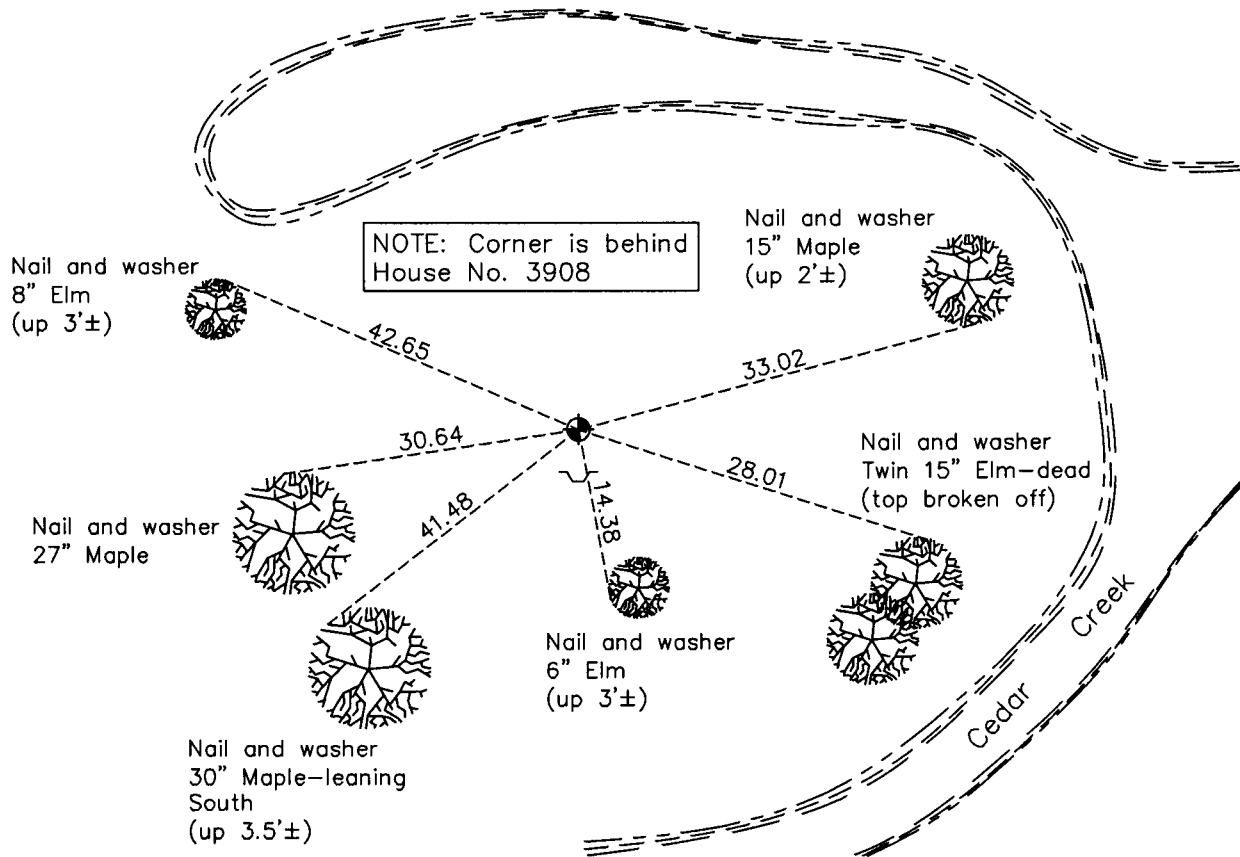
Northwest Corner of Sec. 5 Township 32 Range 24

On the 15th day of June, 1965, the described corner was evidenced by a concrete monument

and to perpetuate the location of said corner, at the exact location thereof, a permanent marker was placed consisting of a cast iron monument with a sign and post on the south side

AND on the 14th day of February, 2011, said permanent marker was found broken. Replaced it with a red & white square steel Telspar monument and 'County Surveyor' cap. Ties were updated.

Updated reference ties are as shown below.



Revision Date

7/18/11

N.A.D. 1983 Coordinates
(1996 Adjustment)

County Project Coordinates	
Northing	<u>196028.4069</u>
Easting	<u>474045.0990</u>
Date	<u>1/24/01</u>

I hereby certify that this United States public land survey monument record is correct and complete to the best of my knowledge and belief.

Larry D. Hoium Date 7/18/11

Larry D. Hoium, Anoka County Surveyor

Minnesota License Number 18165