

# CERTIFICATE OF LOCATION OF GOVERNMENT CORNER

County of Anoka

State of Minnesota

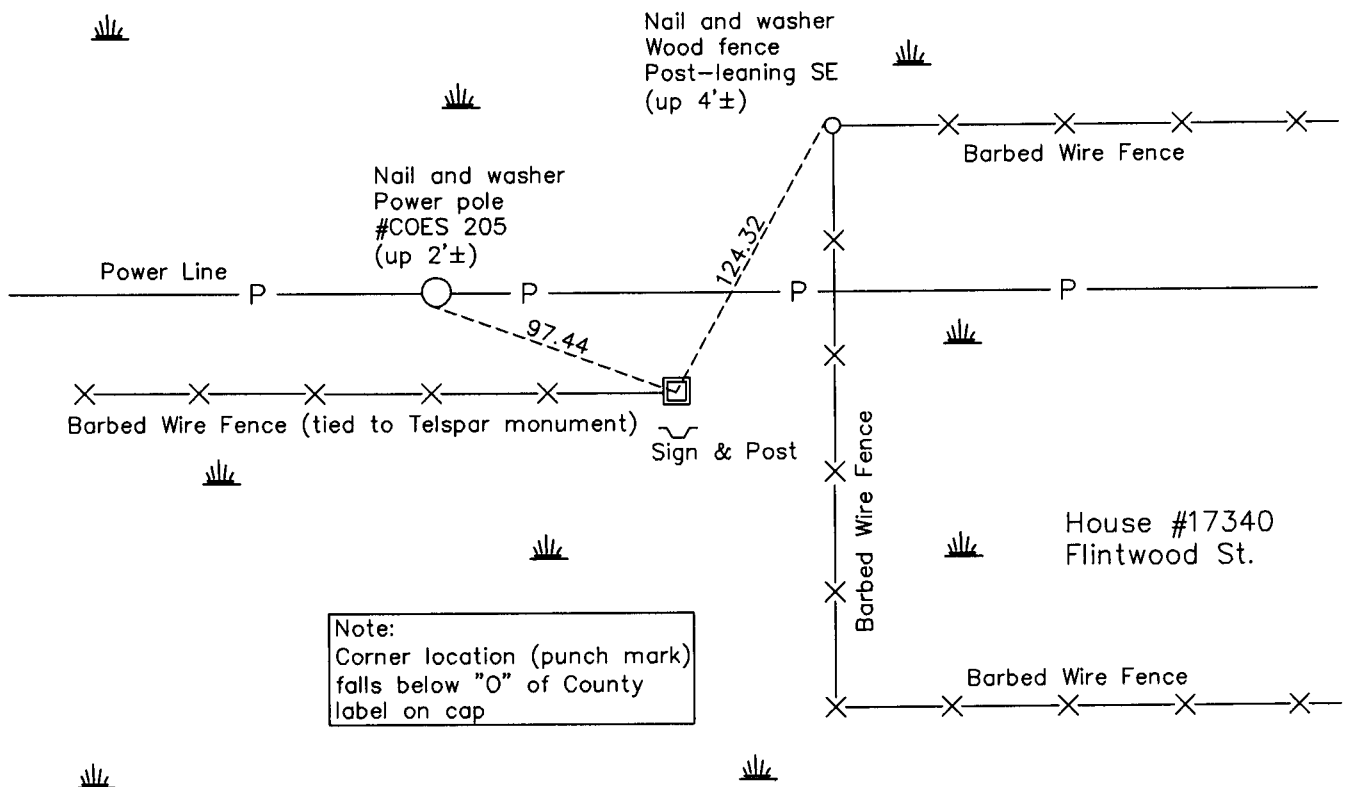
## South 1/4 Corner of Sec. 1 Township 32 Range 24

On the 8th day of February, 1963, the described corner was evidenced by area resurvey

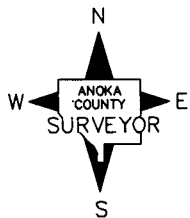
and to perpetuate the location of said corner, at the exact location thereof, a permanent marker was placed consisting of a red & white 2" square steel Telspar monument

AND on the 17th day of March, 2011, said permanent marker was replaced with a new red & white 2" square steel Telspar monument with a 'County Surveyor' cap up 0.5'±

Updated reference ties are as shown below.



Note:  
Corner location (punch mark)  
falls below "O" of County  
label on cap



Revision Date

4/06/11

N.A.D. 1983 Coordinates  
(1996 Adjustment)

County Project Coordinates	
Northing	<u>190600.5036</u>
Easting	<u>497778.1632</u>
Date	<u>12/06/00</u>

I hereby certify that this United States public land survey monument record is correct and complete to the best of my knowledge and belief.

*Larry D. Hoium* Date 4/06/11

Larry D. Hoium, Anoka County Surveyor

Minnesota License Number 18165