

CERTIFICATE OF LOCATION OF GOVERNMENT CORNER

County of Anoka

State of Minnesota

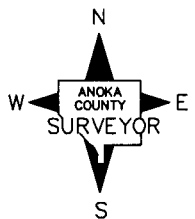
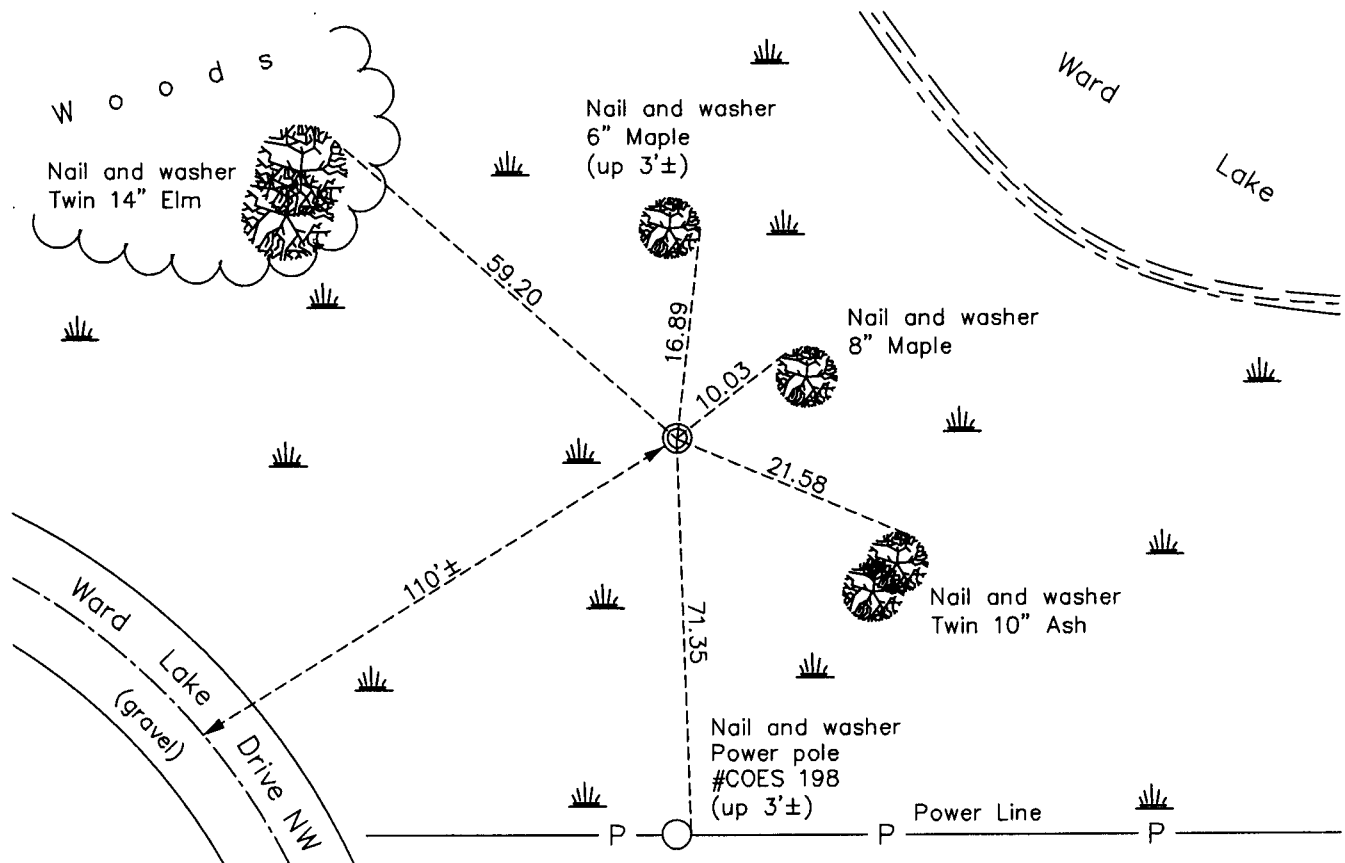
Southwest Corner of Sec. 1 Township 32 Range 24

On the 7th day of February, 1963, the described corner was evidenced by area resurvey

and to perpetuate the location of said corner, at the exact location thereof, a permanent marker was placed consisting of a red and white iron pipe

AND on the 17th day of February, 2011, said permanent marker was found up 4'± and the ties were updated. A sign and post was set 1'± north of the iron pipe.

Updated reference ties are as shown below.



Revision Date
4/08/11

N.A.D. 1983 Coordinates
(1996 Adjustment)

County Project Coordinates	
Northing	<u>190639.5897</u>
Easting	<u>495172.0072</u>
Date	<u>11/30/00</u>

I hereby certify that this United States public land survey monument record is correct and complete to the best of my knowledge and belief.

Larry D. Hoium Date 4/08/11

Larry D. Hoium, Anoka County Surveyor

Minnesota License Number 18165