

# CERTIFICATE OF LOCATION OF GOVERNMENT CORNER

County of Anoka

State of Minnesota

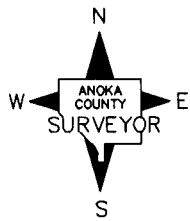
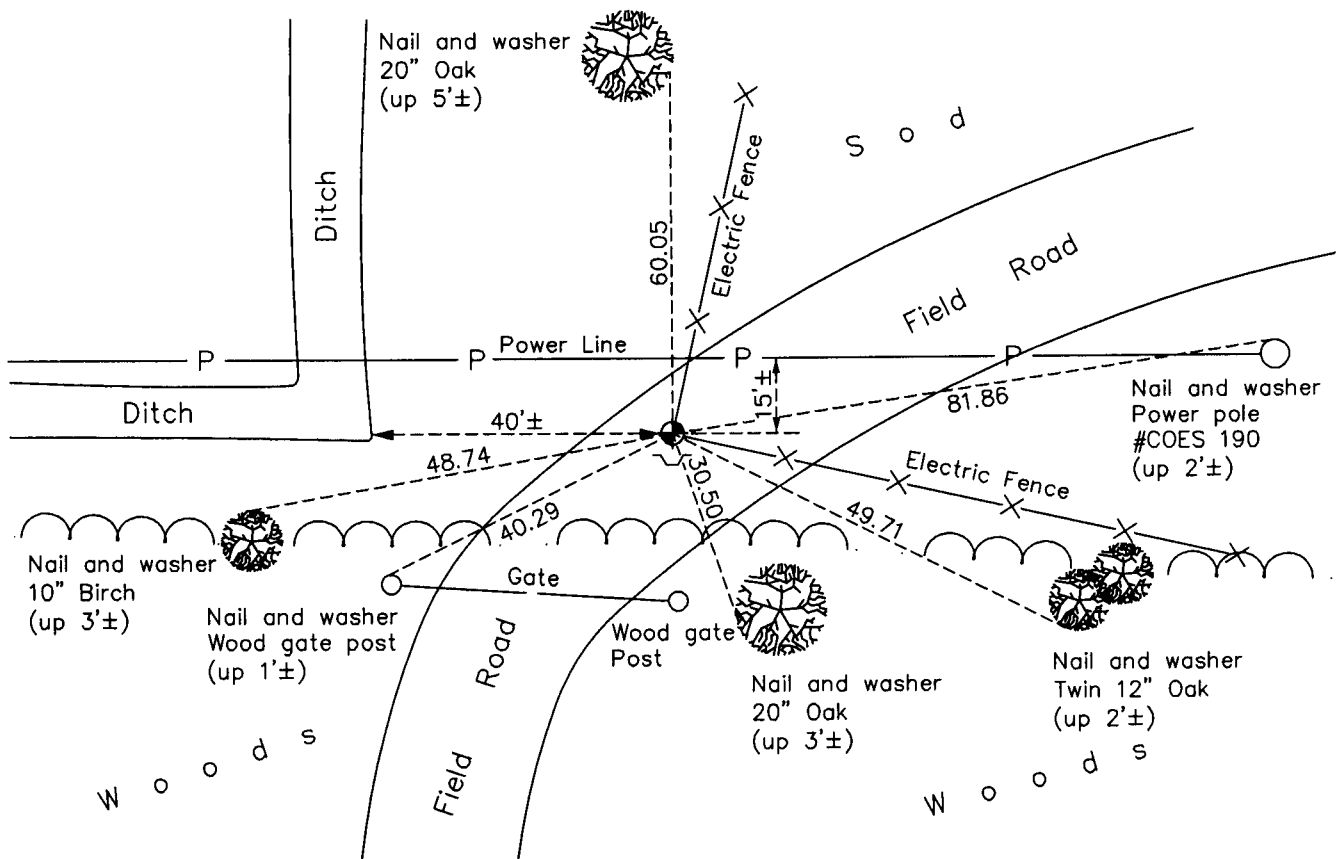
## North 1/4 Corner of Sec. 11 Township 32 Range 24

On the 17th day of July, 1962, the described corner was evidenced by area resurvey

and to perpetuate the location of said corner, at the exact location thereof, a permanent marker was placed consisting of a cast iron monument

AND on the 11th day of January, 2011, said permanent marker was found down 1'± and the ties were updated. On February 17, 2011 a sign and post was set 1'± south of monument.

Updated reference ties are as shown below.



N.A.D. 1983 Coordinates  
(1996 Adjustment)

County Project Coordinates	
Northing	<u>190621.0508</u>
Easting	<u>492546.5905</u>
Date	<u>12/07/00</u>

Revision Date  
4/11/11

I hereby certify that this United States public land survey monument record is correct and complete to the best of my knowledge and belief.

*Larry D. Hoium* Date 4/11/11

Larry D. Hoium, Anoka County Surveyor

Minnesota License Number 18165