

CERTIFICATE OF LOCATION OF GOVERNMENT CORNER

County of Anoka

State of Minnesota

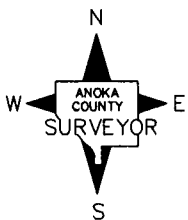
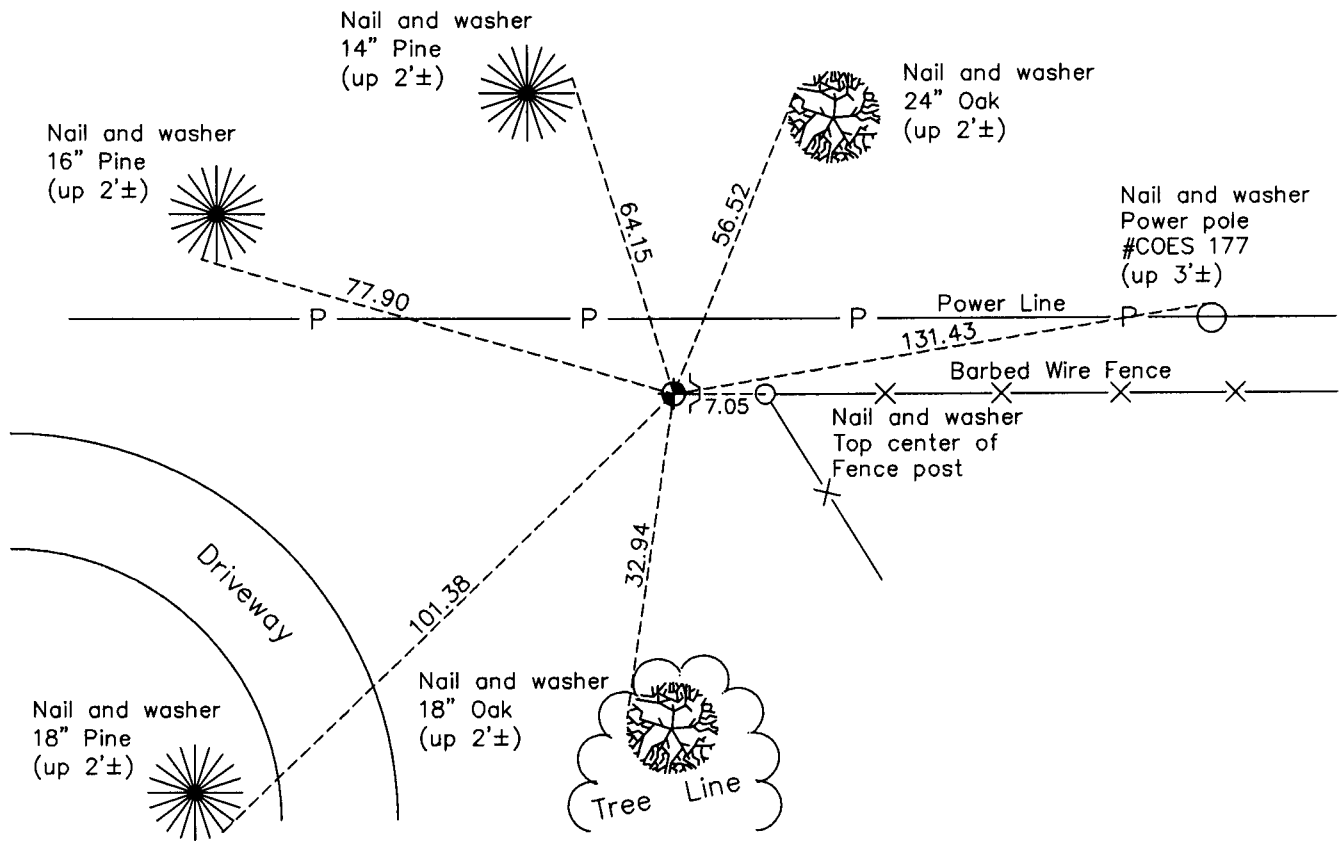
North 1/4 Corner of Sec. 10 Township 32 Range 24

On the 25th day of February, 1963, the described corner was evidenced by area resurvey

and to perpetuate the location of said corner, at the exact location thereof, a permanent marker was placed consisting of a cast iron monument with a sign and post on the east side. The original cast iron monument is in place 4'± down.

AND on the 15th day of February, 2011, said permanent marker was found down 1'± and the ties were updated

Updated reference ties are as shown below.



Revision Date

4/11/11

N.A.D. 1983 Coordinates
(1996 Adjustment)

County Project Coordinates	
Northing	190679.4988
Easting	487255.2234
Date	5/06/02

I hereby certify that this United States public land survey monument record is correct and complete to the best of my knowledge and belief.

Larry D. Hoium Date 4/11/11

Larry D. Hoium, Anoka County Surveyor

Minnesota License Number 18165