

# CERTIFICATE OF LOCATION OF GOVERNMENT CORNER

County of Anoka

State of Minnesota

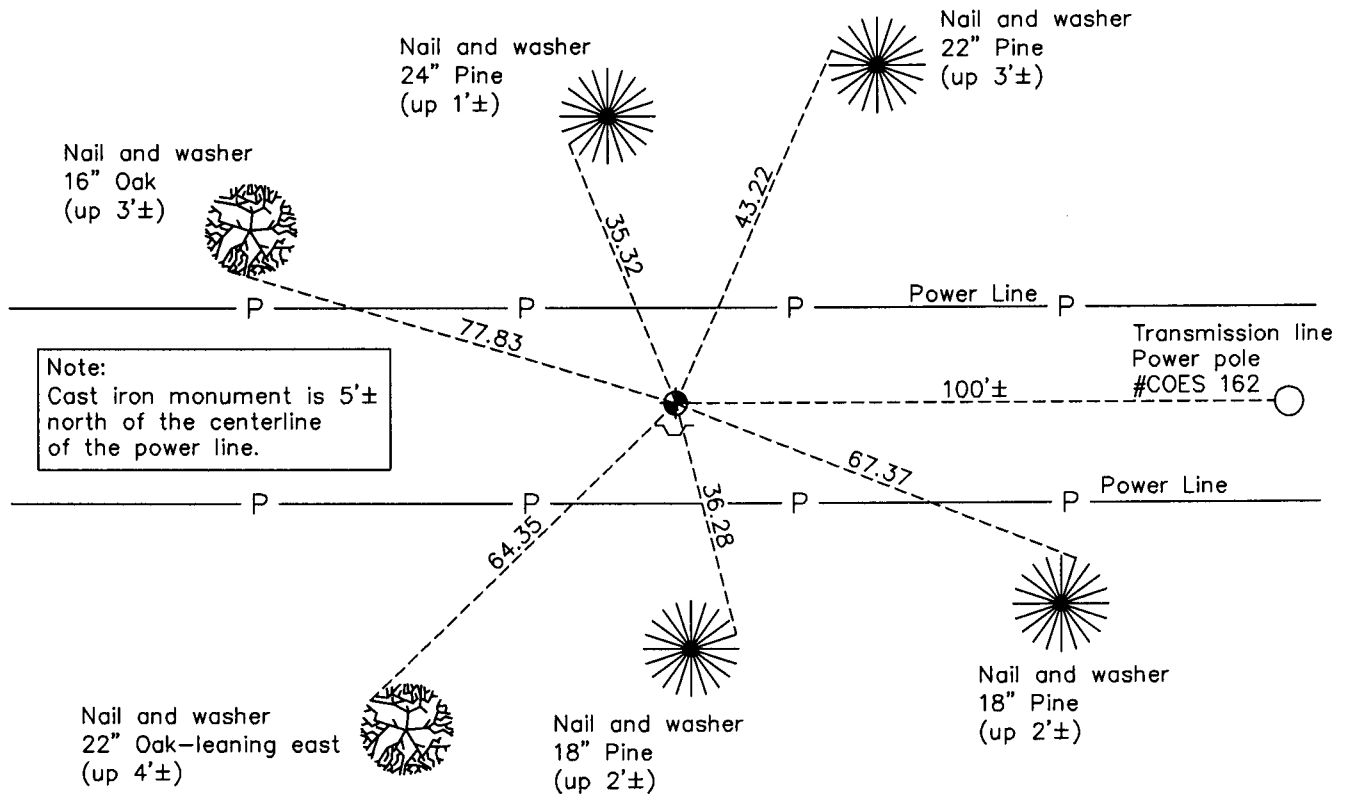
## South 1/4 Corner of Sec. 4 Township 32 Range 24

On the 3rd day of November, 1961, the described corner was evidenced by area resurvey

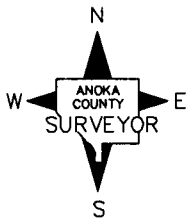
and to perpetuate the location of said corner, at the exact location thereof, a permanent marker was placed consisting of a cast iron monument with a sign and post on the north side

AND on the 5th day of January, 2011, said permanent marker was found with the sign & post missing & the ties were updated. On Feb. 16, 2011 a sign & post was set 1'± south of CIM.

Updated reference ties are as shown below.



**Note:**  
Cast iron monument is 5'± north of the centerline of the power line.



Revision Date  
4/13/11

N.A.D. 1983 Coordinates  
(1996 Adjustment)

County Project Coordinates	
Northing	190808.7786
Easting	481992.6925
Date	12/06/00

I hereby certify that this United States public land survey monument record is correct and complete to the best of my knowledge and belief.

*Larry D. Hoium* Date 4/13/11

Larry D. Hoium, Anoka County Surveyor  
Minnesota License Number 18165