

CERTIFICATE OF LOCATION OF GOVERNMENT CORNER

County of Anoka

State of Minnesota

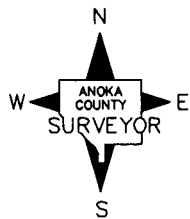
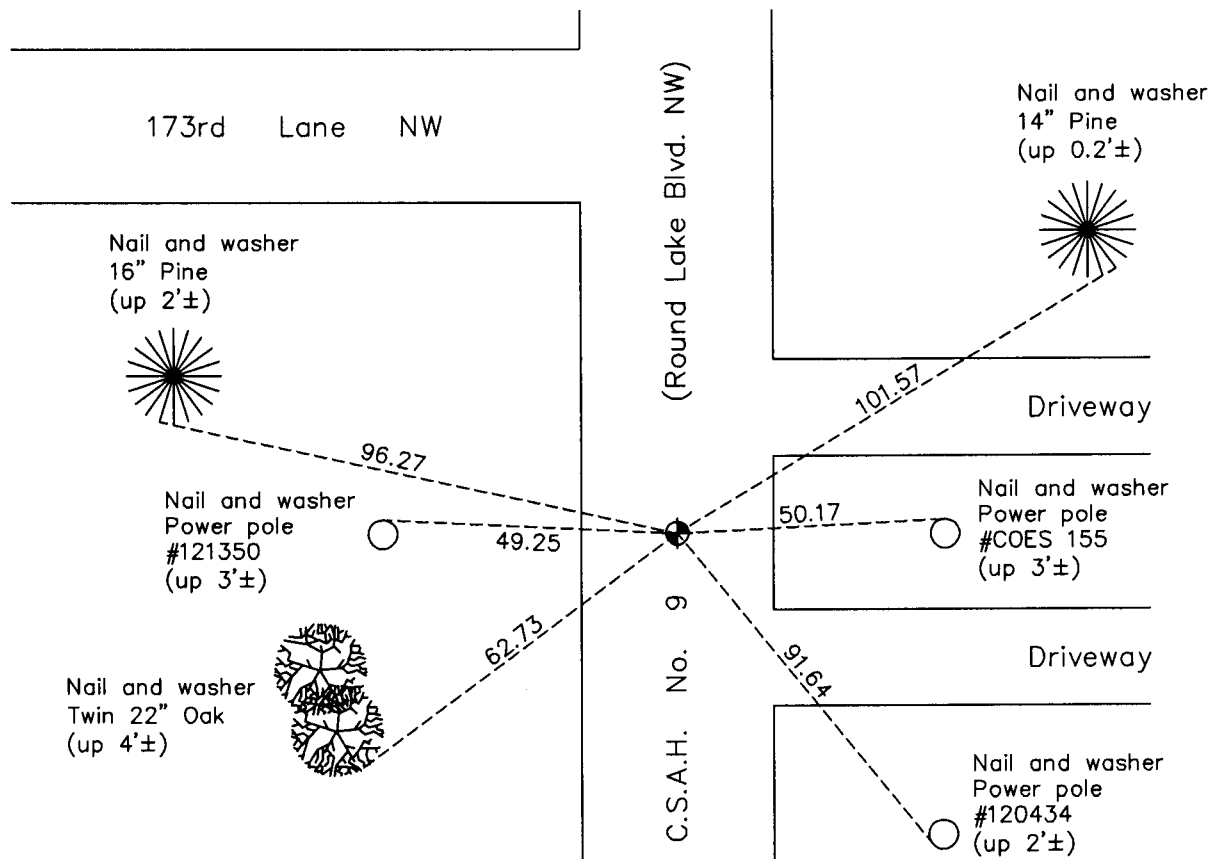
Southwest Corner of Sec. 4 Township 32 Range 24

On the 7th day of July, 1960, the described corner was evidenced by an iron pipe
over a granite monument found by the Highway Department

and to perpetuate the location of said corner, at the exact location thereof, a permanent marker
 was placed consisting of a cast iron monument

AND on the 11th day of February, 2011, said permanent marker was found and the ties
were updated

Updated reference ties are as shown below.



Revision Date
4/14/11

N.A.D. 1983 Coordinates
 (1996 Adjustment)

County Project Coordinates	
Northing	<u>190860.7229</u>
Easting	<u>479356.7043</u>
Date	<u>8/07/00</u>

I hereby certify that this United States public land survey monument record is correct and complete to the best of my knowledge and belief.

Larry D. Hoium Date 4/14/11

Larry D. Hoium, Anoka County Surveyor

Minnesota License Number 18165