

CERTIFICATE OF LOCATION OF GOVERNMENT CORNER

County of Anoka

State of Minnesota

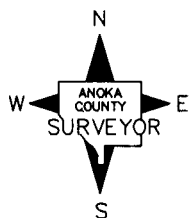
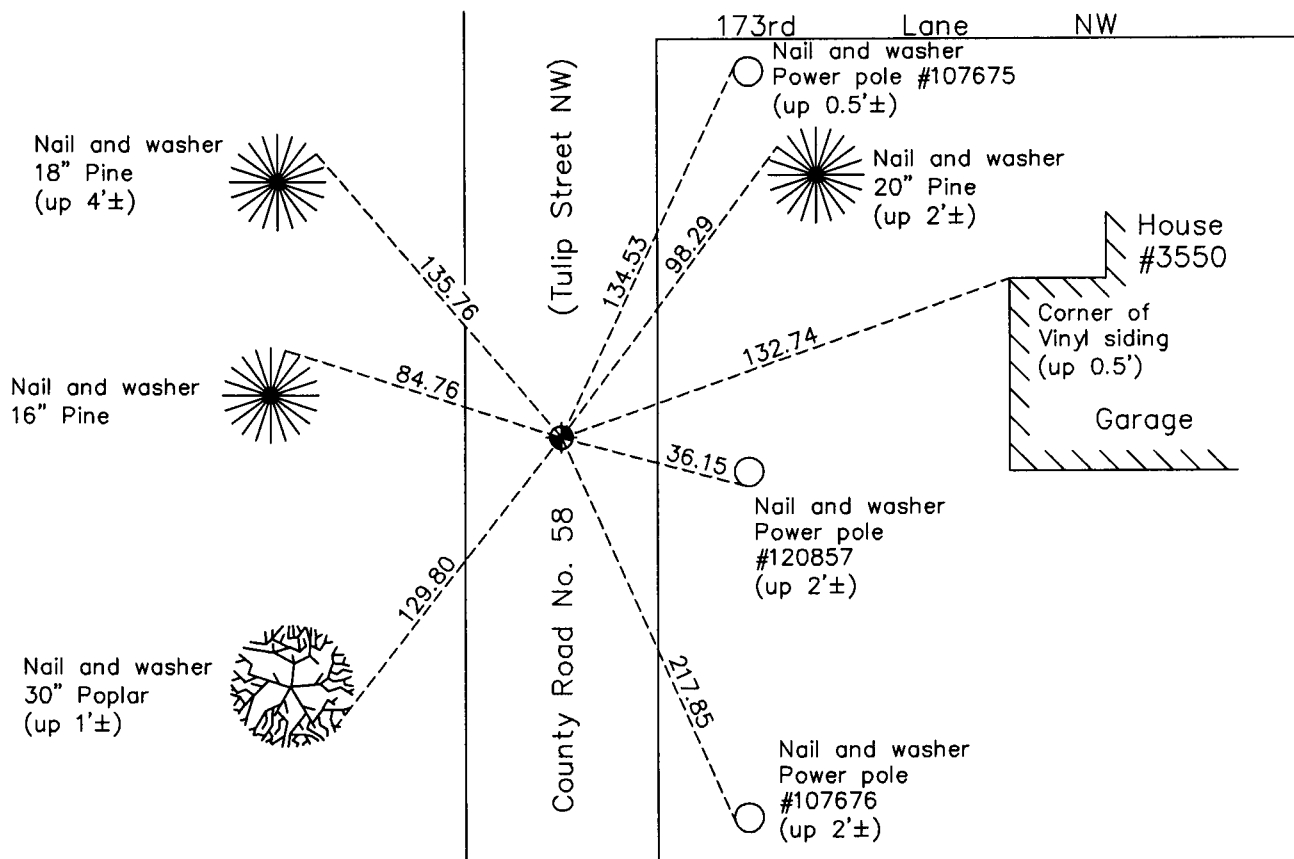
South 1/4 Corner of Sec. 5 Township 32 Range 24

On the 9th day of July, 1968, the described corner was evidenced by a 1/2" iron pipe

and to perpetuate the location of said corner, at the exact location thereof, a permanent marker was placed consisting of a cast iron monument

AND on the 21st day of December, 2010, said permanent marker was found down 0.2'± and the ties were updated

Updated reference ties are as shown below.



Revision Date
4/14/11

N.A.D. 1983 Coordinates
(1996 Adjustment)

County Project Coordinates	
Northing	190908.1924
Easting	476712.4436
Date	10/03/00

I hereby certify that this United States public land survey monument record is correct and complete to the best of my knowledge and belief.

Larry D. Hoium Date 4/14/11

Larry D. Hoium, Anoka County Surveyor

Minnesota License Number 18165