

CERTIFICATE OF LOCATION OF GOVERNMENT CORNER

County of Anoka

State of Minnesota

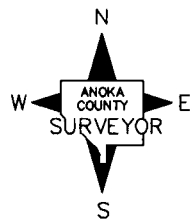
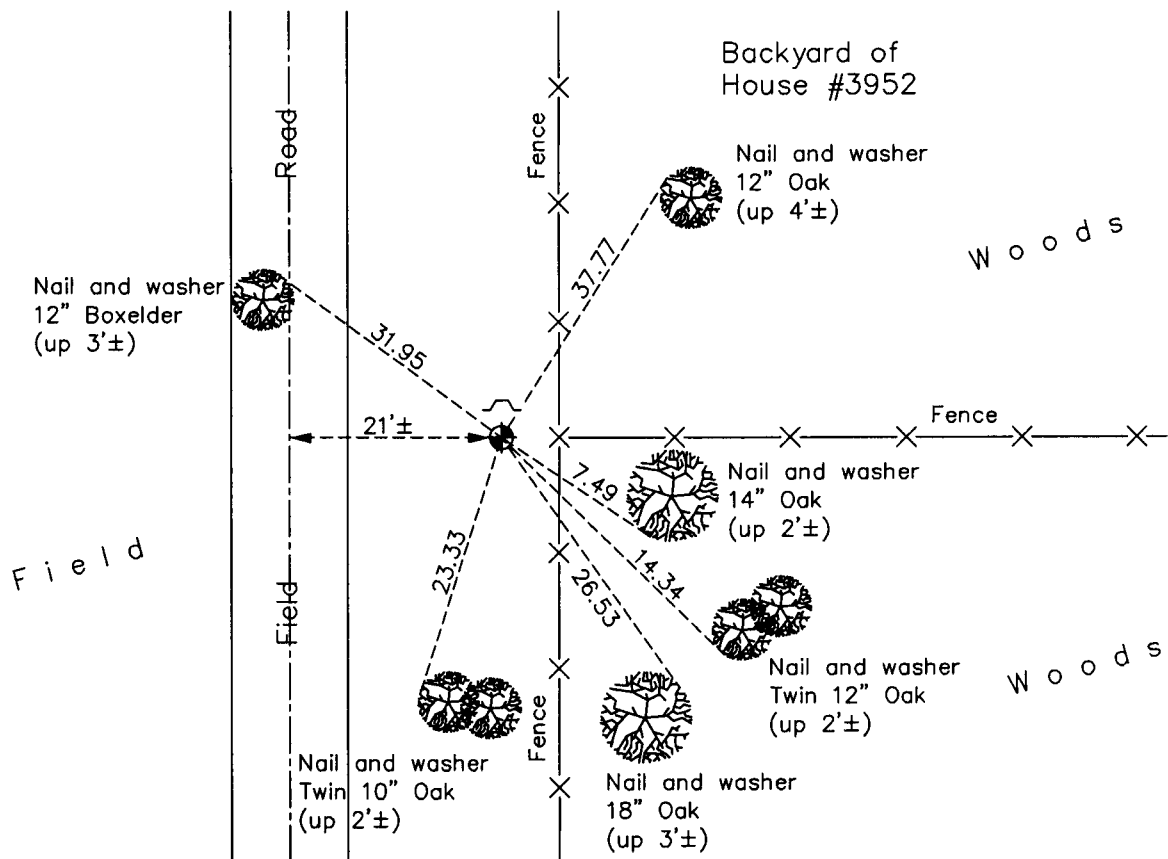
East 1/4 Corner of Sec. 7 Township 32 Range 24

On the 17th day of May, 1966, the described corner was evidenced by area resurvey

and to perpetuate the location of said corner, at the exact location thereof, a permanent marker was placed consisting of a cast iron monument with a sign and post on the north side

AND on the 17th day of December, 2010, said permanent marker was found flush with the surface and the ties were updated

Updated reference ties are as shown below.



Revision Date

4/19/11

N.A.D. 1983 Coordinates
(1996 Adjustment)

County Project Coordinates	
Northing	188282.4293
Easting	474121.5602
Date	1/24/01

I hereby certify that this United States public land survey monument record is correct and complete to the best of my knowledge and belief.

Larry D. Hoium Date 4/19/11

Larry D. Hoium, Anoka County Surveyor

Minnesota License Number 18165