

CERTIFICATE OF LOCATION OF GOVERNMENT CORNER

County of Anoka

State of Minnesota

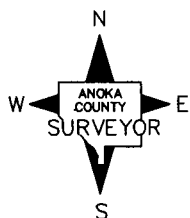
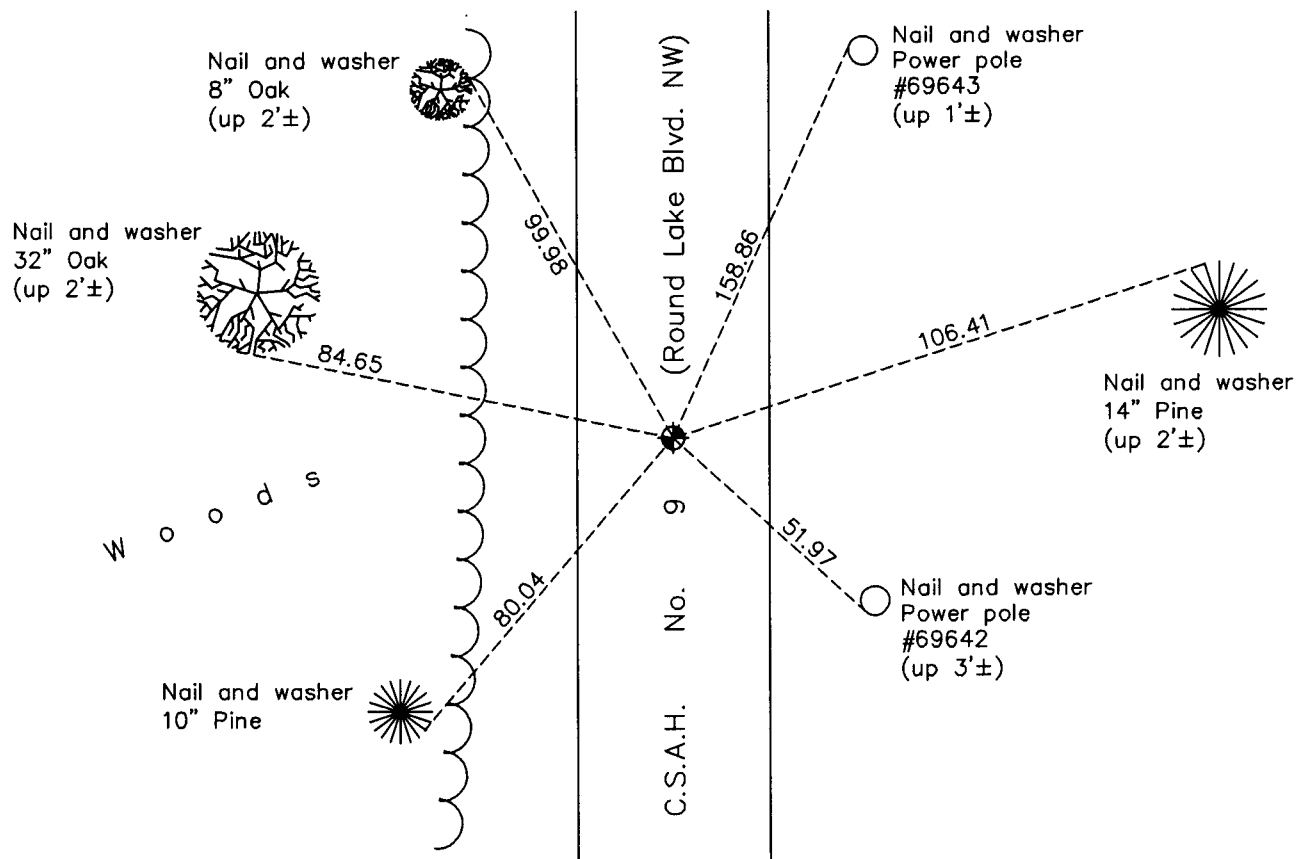
West 1/4 Corner of Sec. 9 Township 32 Range 24

On the 29th day of July, 1964, the described corner was evidenced by a 1/2" iron pipe set by N.C. Hoium

and to perpetuate the location of said corner, at the exact location thereof, a permanent marker was placed consisting of a cast iron monument

AND on the 15th day of February, 2011, said permanent marker was found and the ties were updated

Updated reference ties are as shown below.



Revision Date
4/19/11

N.A.D. 1983 Coordinates
(1996 Adjustment)

County Project Coordinates	
Northing	<u>188218.5120</u>
Easting	<u>479351.0887</u>
Date	<u>10/03/00</u>

I hereby certify that this United States public land survey monument record is correct and complete to the best of my knowledge and belief.

Larry D. Hoium Date 4/19/11

Larry D. Hoium, Anoka County Surveyor

Minnesota License Number 18165