

# CERTIFICATE OF LOCATION OF GOVERNMENT CORNER

County of Anoka

State of Minnesota

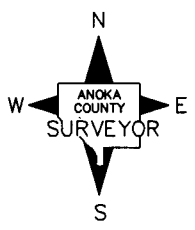
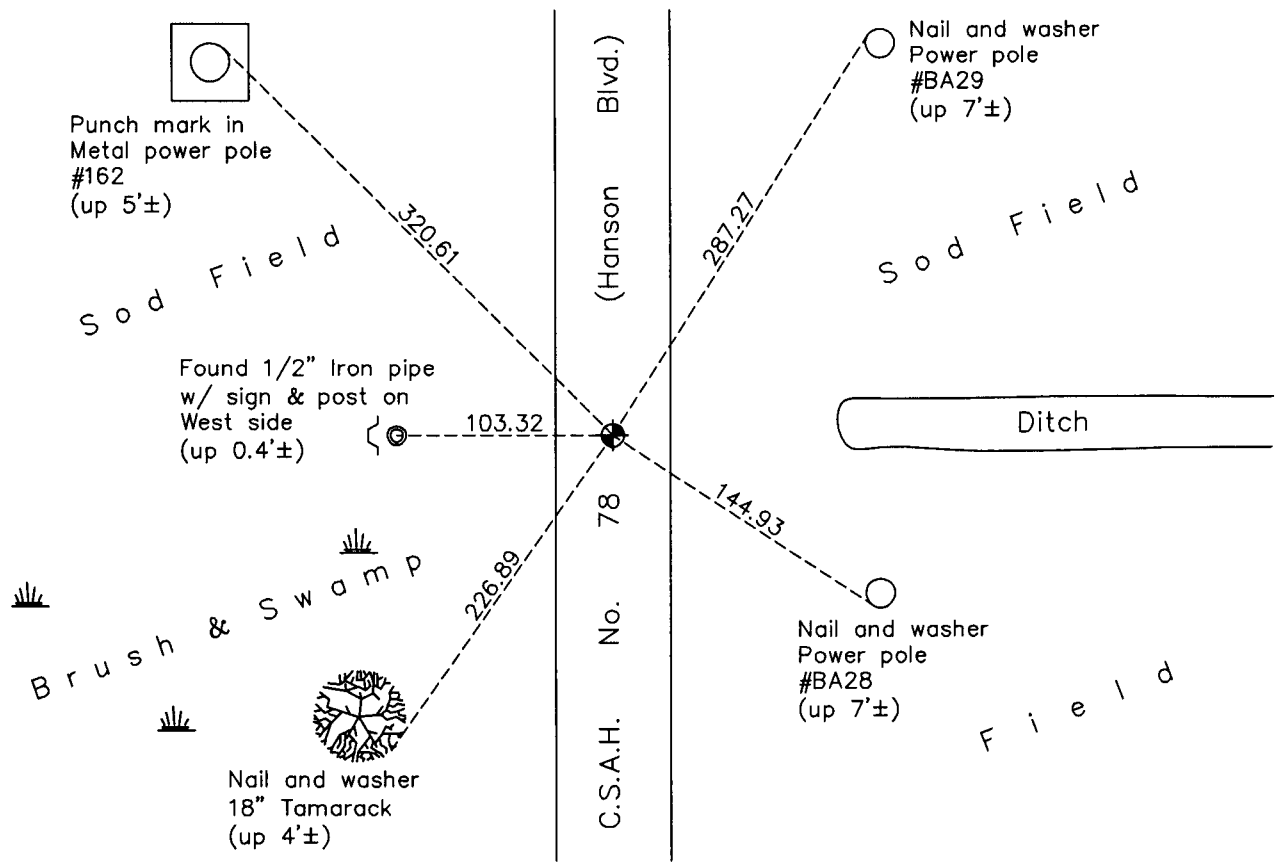
## West 1/4 Corner of Sec. 11 Township 32 Range 24

On the 3rd day of January, 1963, the described corner was evidenced by area resurvey

and to perpetuate the location of said corner, at the exact location thereof, a permanent marker was placed consisting of a cast iron monument with P.K. Nails 2.00' North and East

AND on the 15th day of February, 2011, said permanent marker was found broken. Replaced with a new cast iron monument and updated ties.

Updated reference ties are as shown below.



Revision Date  
7/19/11

N.A.D. 1983 Coordinates  
(1996 Adjustment)

County Project Coordinates	
Northing	<u>188113.0049</u>
Easting	<u>489910.9966</u>
Date	<u>10/01/93</u>

I hereby certify that this United States public land survey monument record is correct and complete to the best of my knowledge and belief.

*Larry D. Hoium* Date 7/19/11

\_\_\_\_\_  
Larry D. Hoium, Anoka County Surveyor

Minnesota License Number 18165