

CERTIFICATE OF LOCATION OF GOVERNMENT CORNER

County of Anoka

State of Minnesota

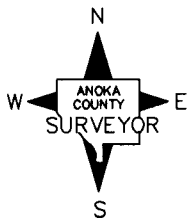
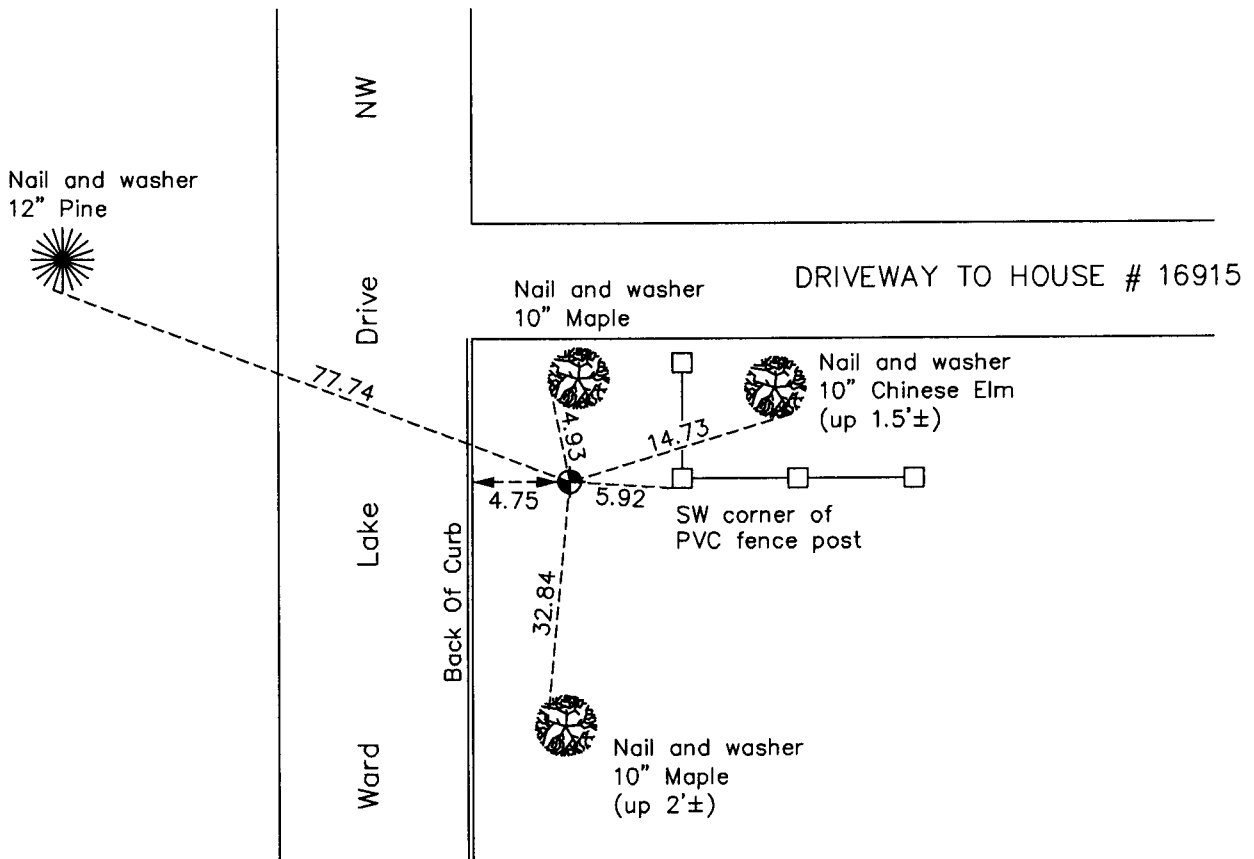
East 1/4 Corner of Sec. 11 Township 32 Range 24

On the 30th day of August, 1962, the described corner was evidenced by area resurvey

and to perpetuate the location of said corner, at the exact location thereof, a permanent marker was placed consisting of a cast iron monument down 0.5'±

AND on the 13th day of October, 2010, said permanent marker was found and the ties
were updated

Updated reference ties are as shown below.



Revision Date
4/19/11

N.A.D. 1983 Coordinates
 (1996 Adjustment)

County Project Coordinates	
Northing	188013.1576
Easting	495156.1281
Date	10/23/00

I hereby certify that this United States public land survey monument record is correct and complete to the best of my knowledge and belief.

Larry D. Hoium Date 4/19/11

Larry D. Hoium, Anoka County Surveyor
 Minnesota License Number 18165