

CERTIFICATE OF LOCATION OF GOVERNMENT CORNER

County of Anoka

State of Minnesota

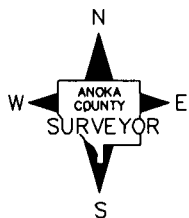
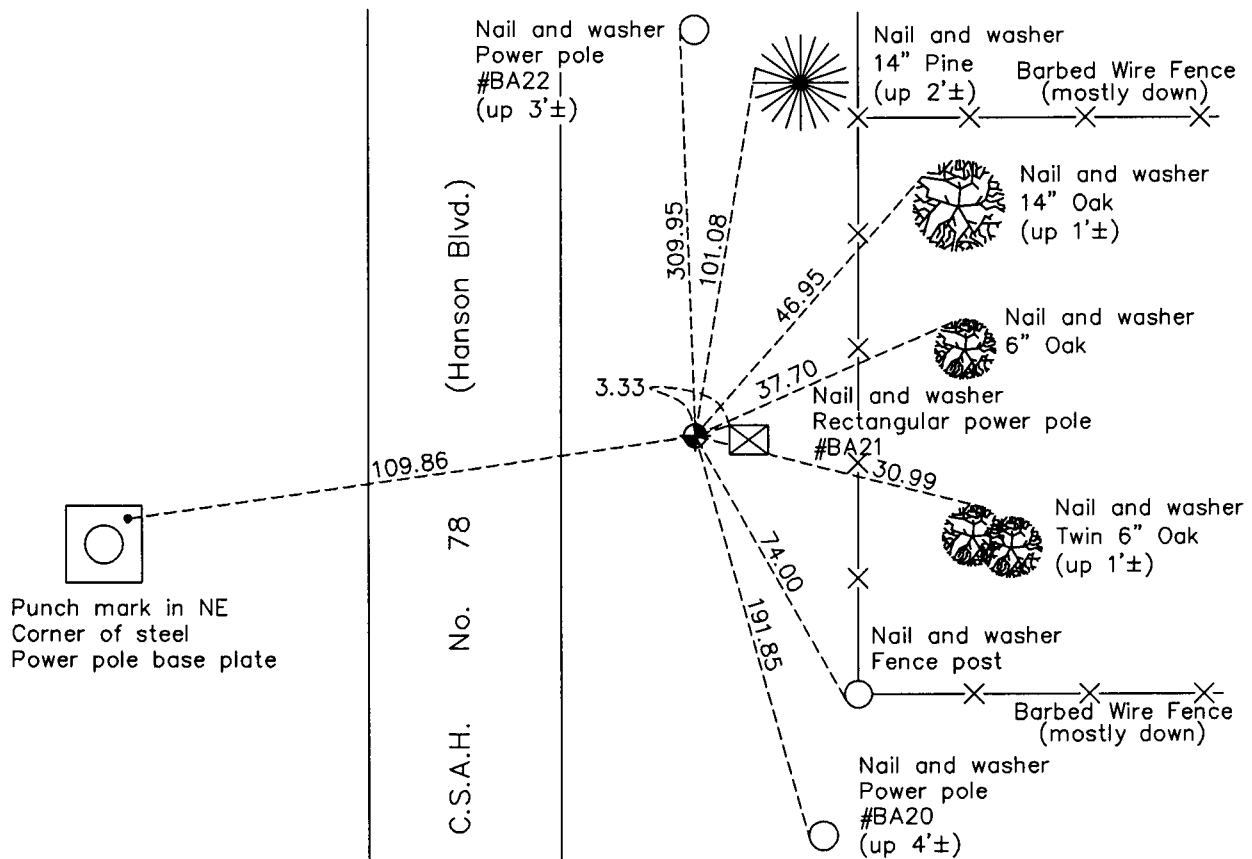
Southwest Corner of Sec. 11 Township 32 Range 24

On the 2nd day of January, 1963, the described corner was evidenced by area resurvey

and to perpetuate the location of said corner, at the exact location thereof, a permanent marker was placed consisting of a cast iron monument

AND on the 15th day of February, 2011, said permanent marker was found down 1'± and the ties were updated. A sign was placed on power pole #BA21.

Updated reference ties are as shown below.



Revision Date

7/18/11

N.A.D. 1983 Coordinates
(1996 Adjustment)

County Project Coordinates	
Northing	185525.0146
Easting	489901.2418
Date	8/07/00

I hereby certify that this United States public land survey monument record is correct and complete to the best of my knowledge and belief.

Date 7/18/11
 _____, Anoka County Surveyor
 Minnesota License Number 18165