

CERTIFICATE OF LOCATION OF GOVERNMENT CORNER

County of Anoka

State of Minnesota

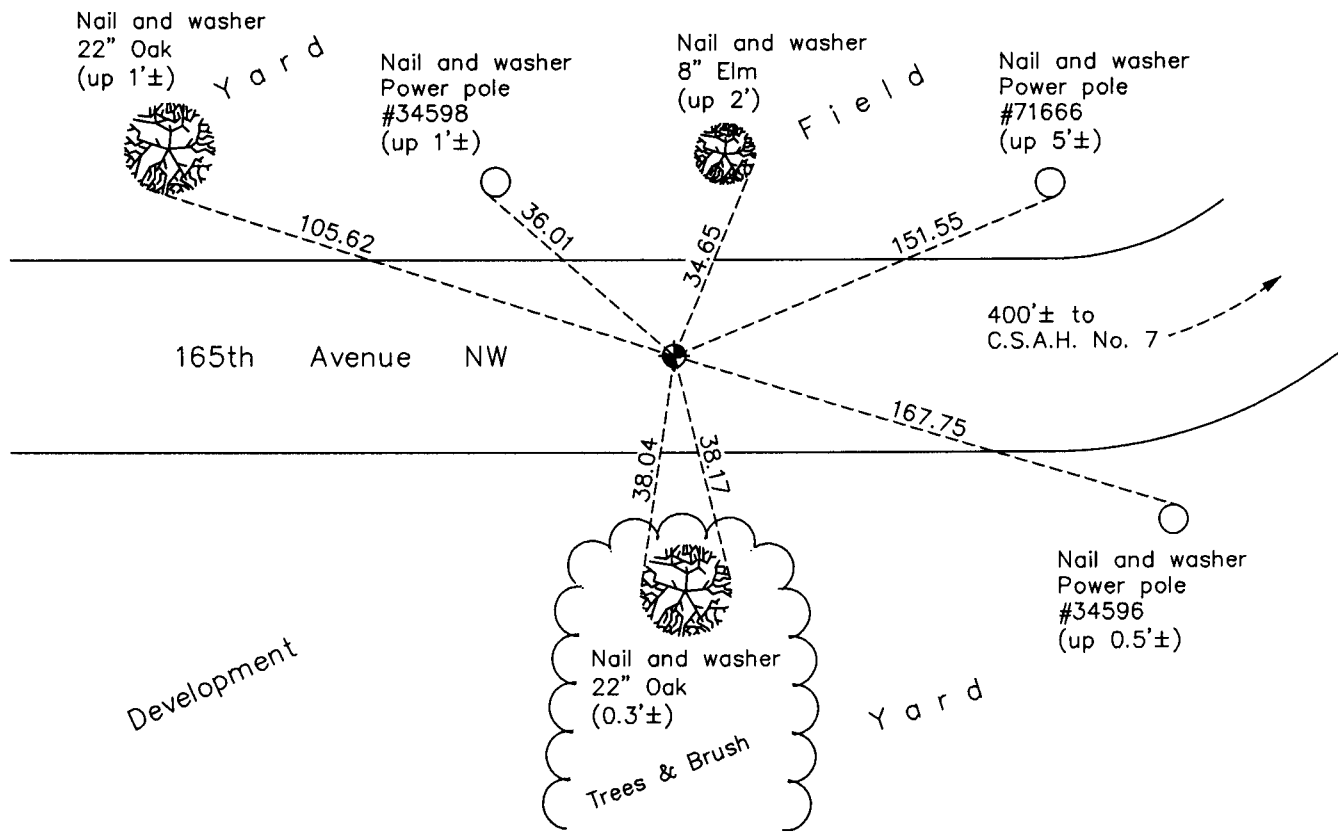
Southwest Corner of Sec. 7 Township 32 Range 24

On the 30th day of July, 1968, the described corner was evidenced by a granite monument

and to perpetuate the location of said corner, at the exact location thereof, a permanent marker was placed consisting of a cast iron monument

AND on the 3rd day of November, 2010, said permanent marker was found flush with the surface and the ties were updated

Updated reference ties are as shown below.



N

S

ANOKA COUNTY SURVEYOR

Revision Date

4/26/11

N.A.D. 1983 Coordinates
(1996 Adjustment)

County Project Coordinates	
Northing	185651.4321
Easting	468615.1127
Date	9/07/99

I hereby certify that this United States public land survey monument record is correct and complete to the best of my knowledge and belief.

Larry D. Hoium Date 4/26/11

Larry D. Hoium, Anoka County Surveyor

Minnesota License Number 18165