

CERTIFICATE OF LOCATION OF GOVERNMENT CORNER

County of Anoka

State of Minnesota

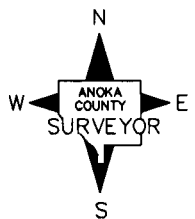
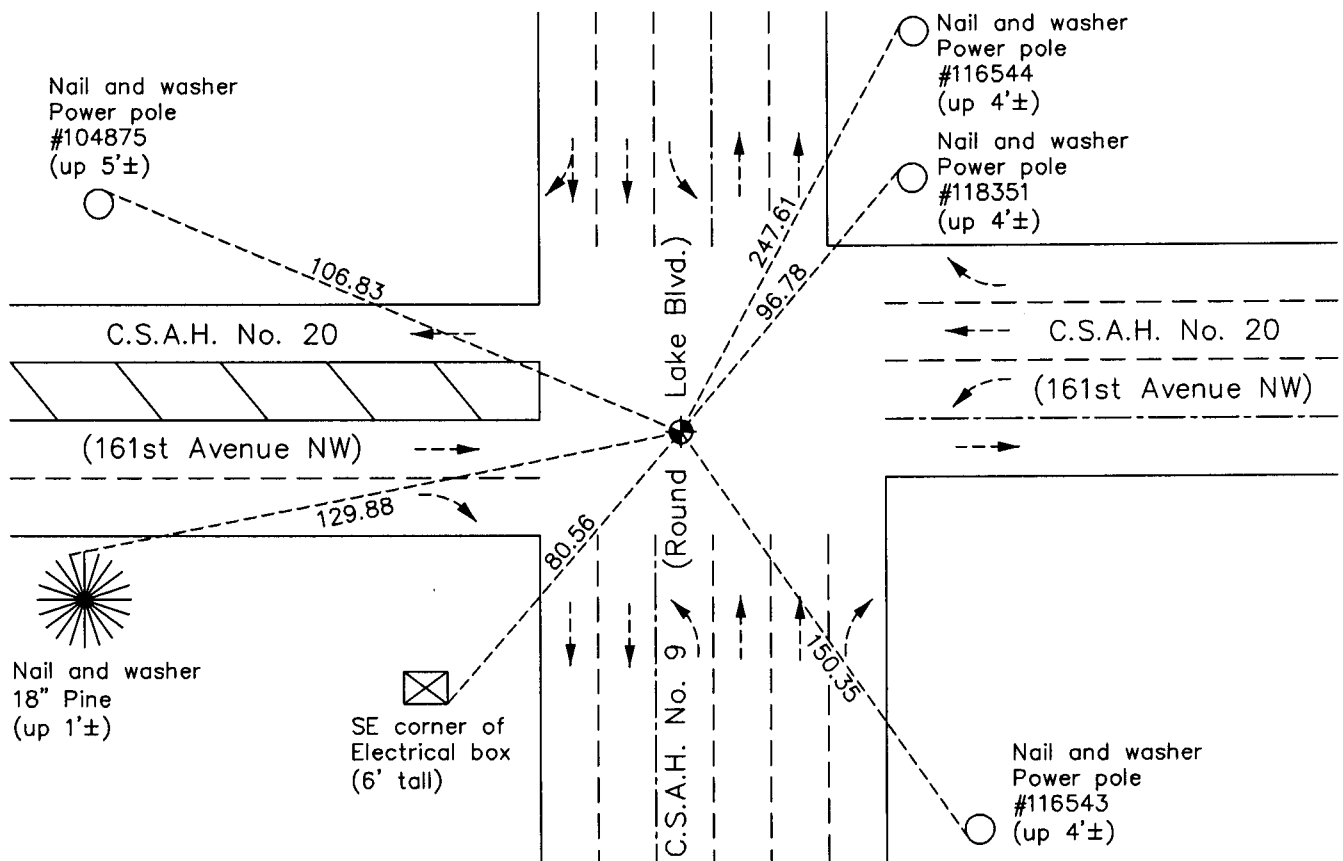
West 1/4 Corner of Sec. 16 Township 32 Range 24

On the 22nd day of August, 1964, the described corner was evidenced by a 1/2" iron pipe from N.C. Hoium ties

and to perpetuate the location of said corner, at the exact location thereof, a permanent marker was placed consisting of a cast iron monument

AND on the 10th day of December, 2010, said permanent marker was found flush with the surface and the ties were updated

Updated reference ties are as shown below.



Revision Date
4/27/11

N.A.D. 1983 Coordinates
(1996 Adjustment)

County Project Coordinates	
Northing	182939.4741
Easting	479368.0930
Date	10/02/00

I hereby certify that this United States public land survey monument record is correct and complete to the best of my knowledge and belief.

Larry D. Hoium Date 4/27/11

Larry D. Hoium, Anoka County Surveyor

Minnesota License Number 18165