

# CERTIFICATE OF LOCATION OF GOVERNMENT CORNER

County of Anoka

State of Minnesota

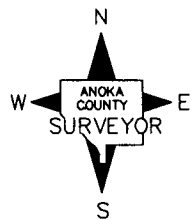
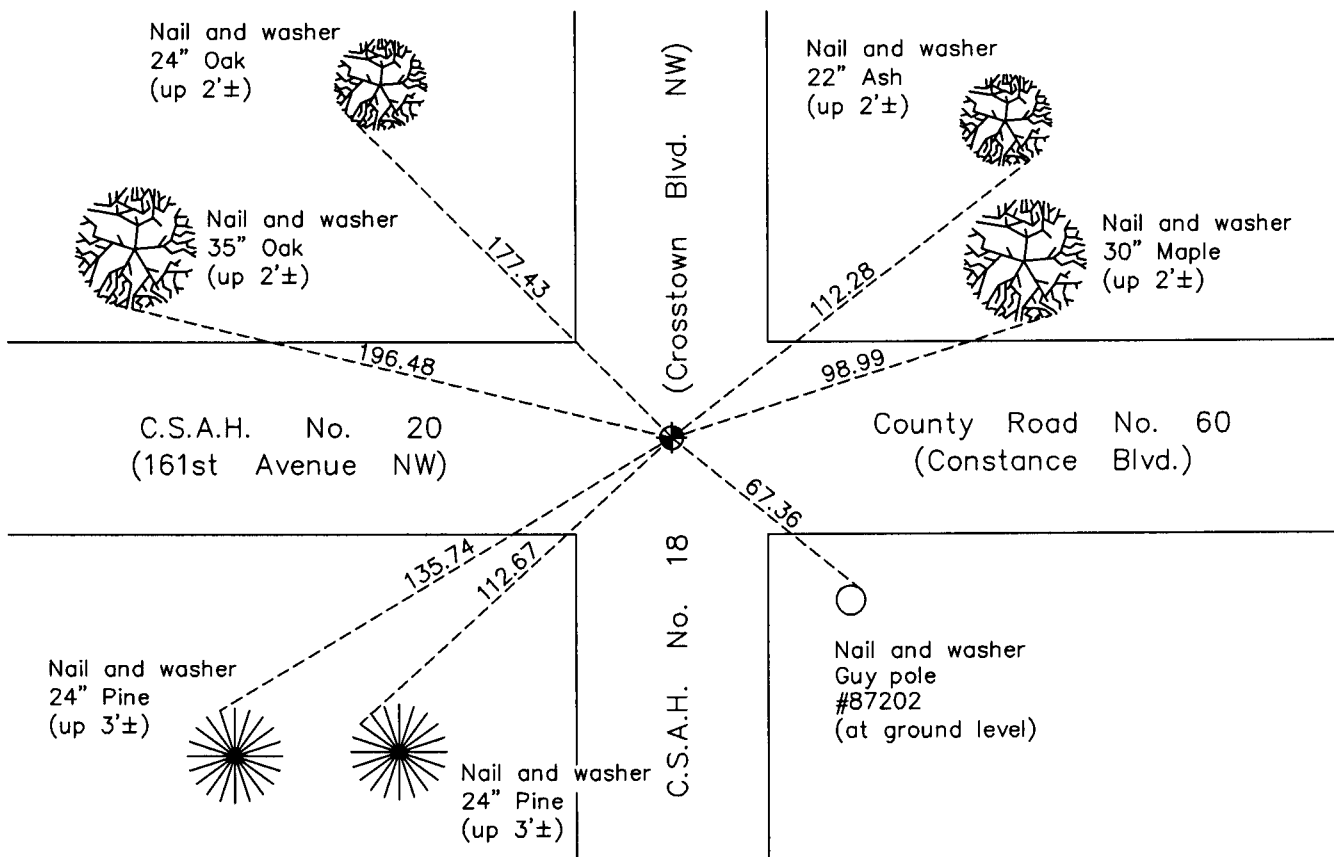
## East 1/4 Corner of Sec. 14 Township 32 Range 24

On the 12th day of September, 1962, the described corner was evidenced by an old rusty  
1' carriage bolt

and to perpetuate the location of said corner, at the exact location thereof, a permanent marker  
 was placed consisting of a cast iron monument

AND on the 28th day of October, 2010, said permanent marker was found flush with the  
surface with top worn and the ties were updated

Updated reference ties are as shown below.



Revision Date  
4/27/11

N.A.D. 1983 Coordinates  
 (1996 Adjustment)

County Project Coordinates	
Northing	182765.1003
Easting	495134.4569
Date	10/12/00

I hereby certify that this United States public land survey monument record is correct and complete to the best of my knowledge and belief.

*Larry D. Hoium* Date 4/27/11

Larry D. Hoium, Anoka County Surveyor

Minnesota License Number 18165