

# CERTIFICATE OF LOCATION OF GOVERNMENT CORNER

County of Anoka

State of Minnesota

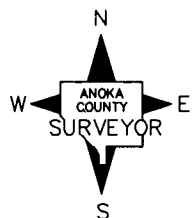
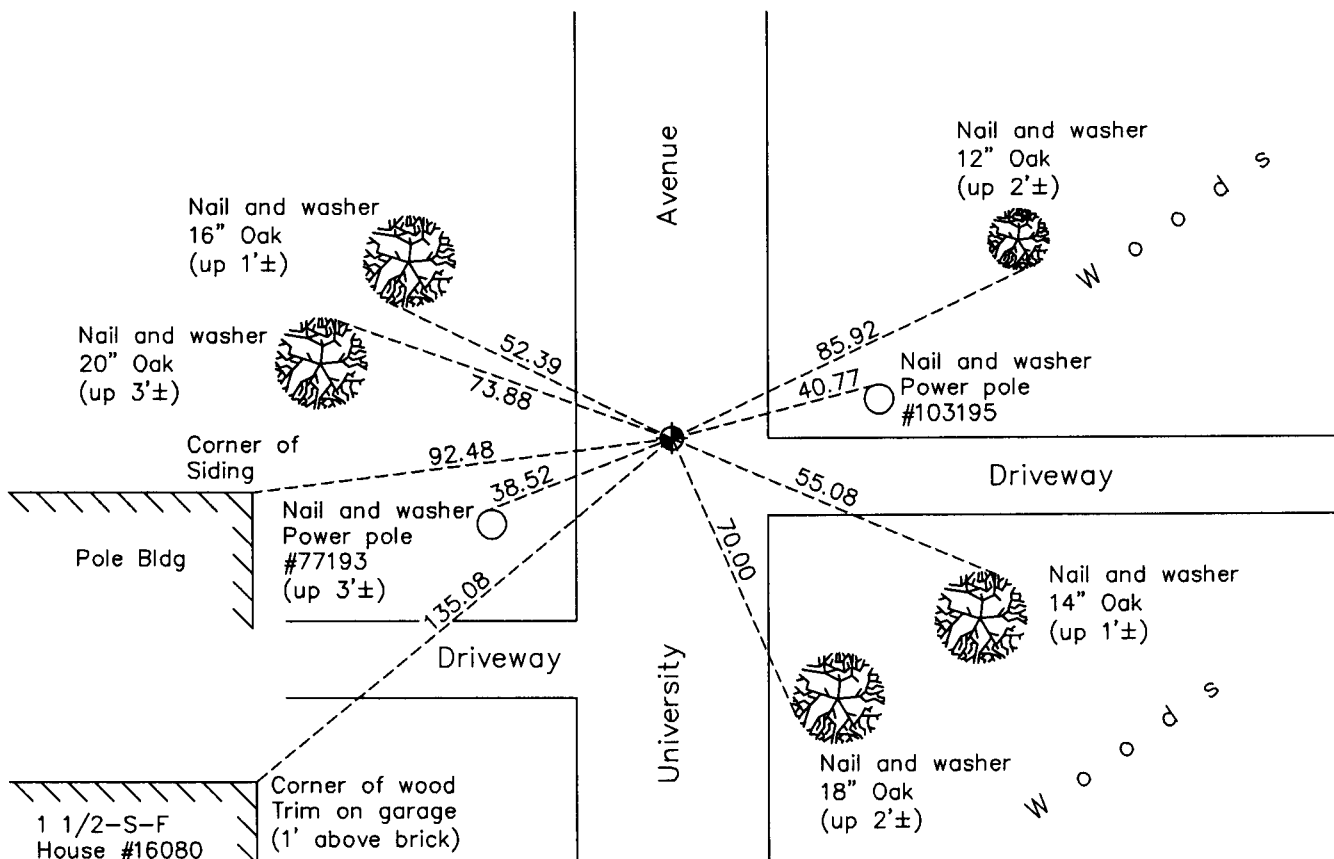
## East 1/4 Corner of Sec. 13 Township 32 Range 24

On the 4th day of September, 1962, the described corner was evidenced by area resurvey

and to perpetuate the location of said corner, at the exact location thereof, a permanent marker was placed consisting of a cast iron monument

AND on the 24th day of January, 2011, said permanent marker was found and the ties were updated

Updated reference ties are as shown below.



Revision Date

4/28/11

N.A.D. 1983 Coordinates  
(1996 Adjustment)

County Project Coordinates	
Northing	182674.5133
Easting	500373.9545
Date	10/23/00

I hereby certify that this United States public land survey monument record is correct and complete to the best of my knowledge and belief.

*Larry D. Hoium* Date 4/28/11

Larry D. Hoium, Anoka County Surveyor

Minnesota License Number 18165