

CERTIFICATE OF LOCATION OF GOVERNMENT CORNER

County of Anoka

State of Minnesota

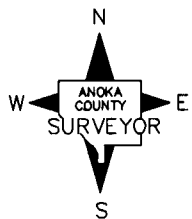
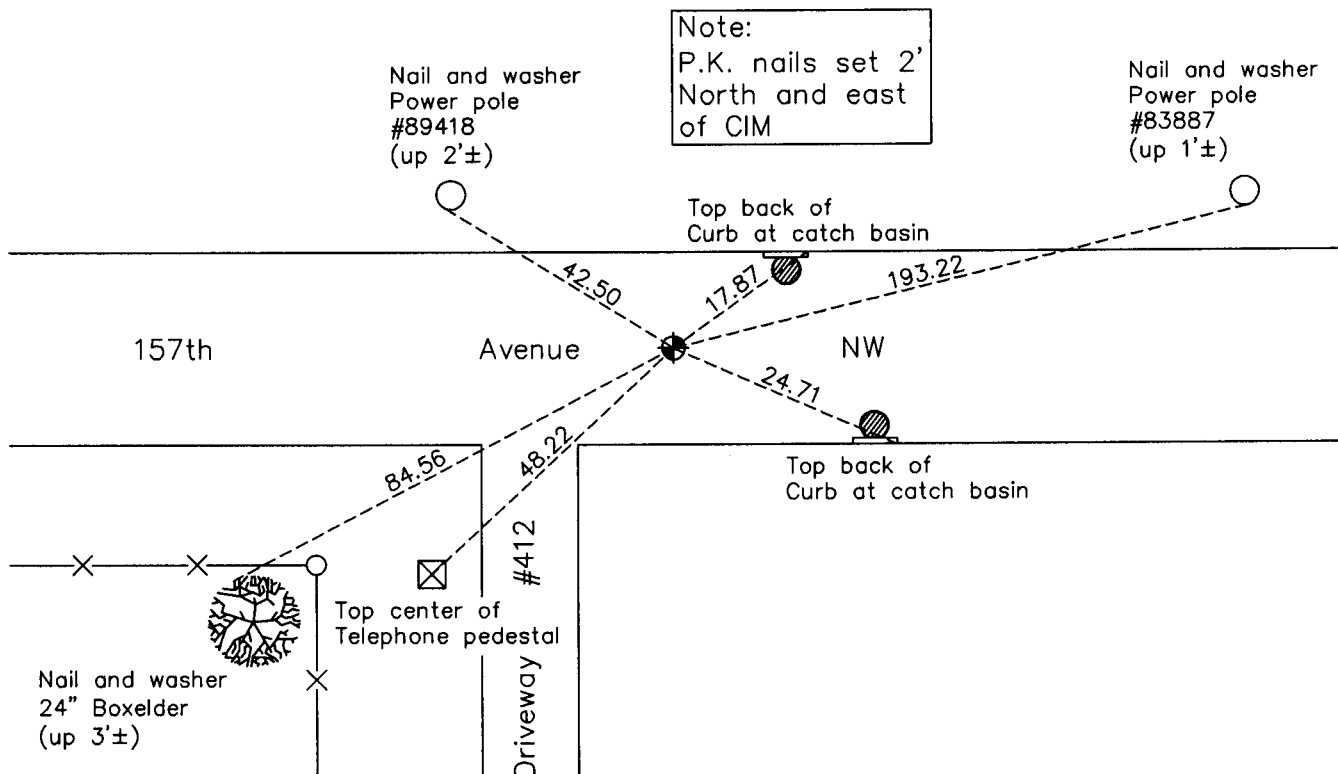
North 1/4 Corner of Sec. 24 Township 32 Range 24

On the 1st day of June, 1983, the described corner was evidenced by area resurvey

and to perpetuate the location of said corner, at the exact location thereof, a permanent marker was placed consisting of a cast iron monument

AND on the 8th day of February, 2011, said permanent marker was found broken. A replacement cast iron monument was set on March 1, 2011 and the ties were updated.

Updated reference ties are as shown below.



Revision Date
4/28/11

N.A.D. 1983 Coordinates
(1996 Adjustment)

County Project Coordinates	
Northing	180085.2165
Easting	497742.2382
Date	12/01/00

I hereby certify that this United States public land survey monument record is correct and complete to the best of my knowledge and belief.

Larry D. Hoium Date 4/28/11

Larry D. Hoium, Anoka County Surveyor

Minnesota License Number 18165