

CERTIFICATE OF LOCATION OF GOVERNMENT CORNER

County of Anoka

State of Minnesota

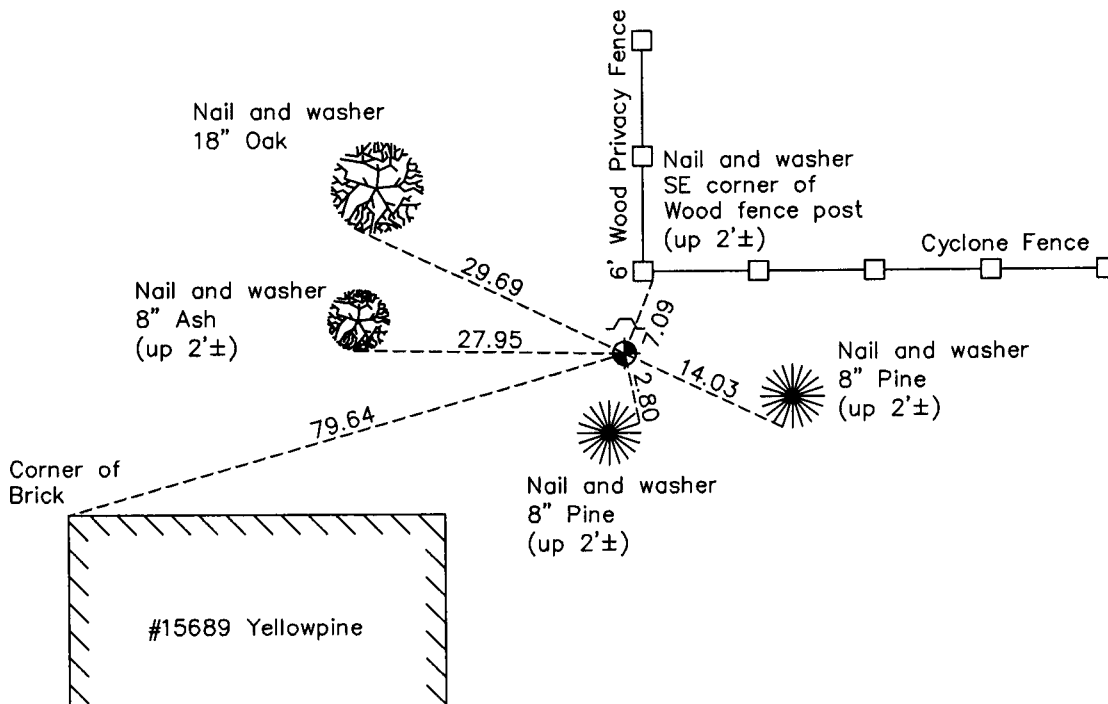
South 1/4 Corner of Sec. 14 Township 32 Range 24

On the 27th day of February, 1963, the described corner was evidenced by area resurvey

and to perpetuate the location of said corner, at the exact location thereof, a permanent marker was placed consisting of a cast iron monument with a sign and post on the north side

AND on the 7th day of February, 2011, said permanent marker was found down 1'± and the ties were updated

Updated reference ties are as shown below.



N

S

Revision Date

4/29/11

N.A.D. 1983 Coordinates
(1996 Adjustment)

County Project Coordinates	
Northing	180186.8112
Easting	492498.5911
Date	6/16/00

I hereby certify that this United States public land survey monument record is correct and complete to the best of my knowledge and belief.

Larry D. Hoium Date 4/29/11

Larry D. Hoium, Anoka County Surveyor

Minnesota License Number 18165