

# CERTIFICATE OF LOCATION OF GOVERNMENT CORNER

County of Anoka

State of Minnesota

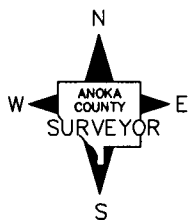
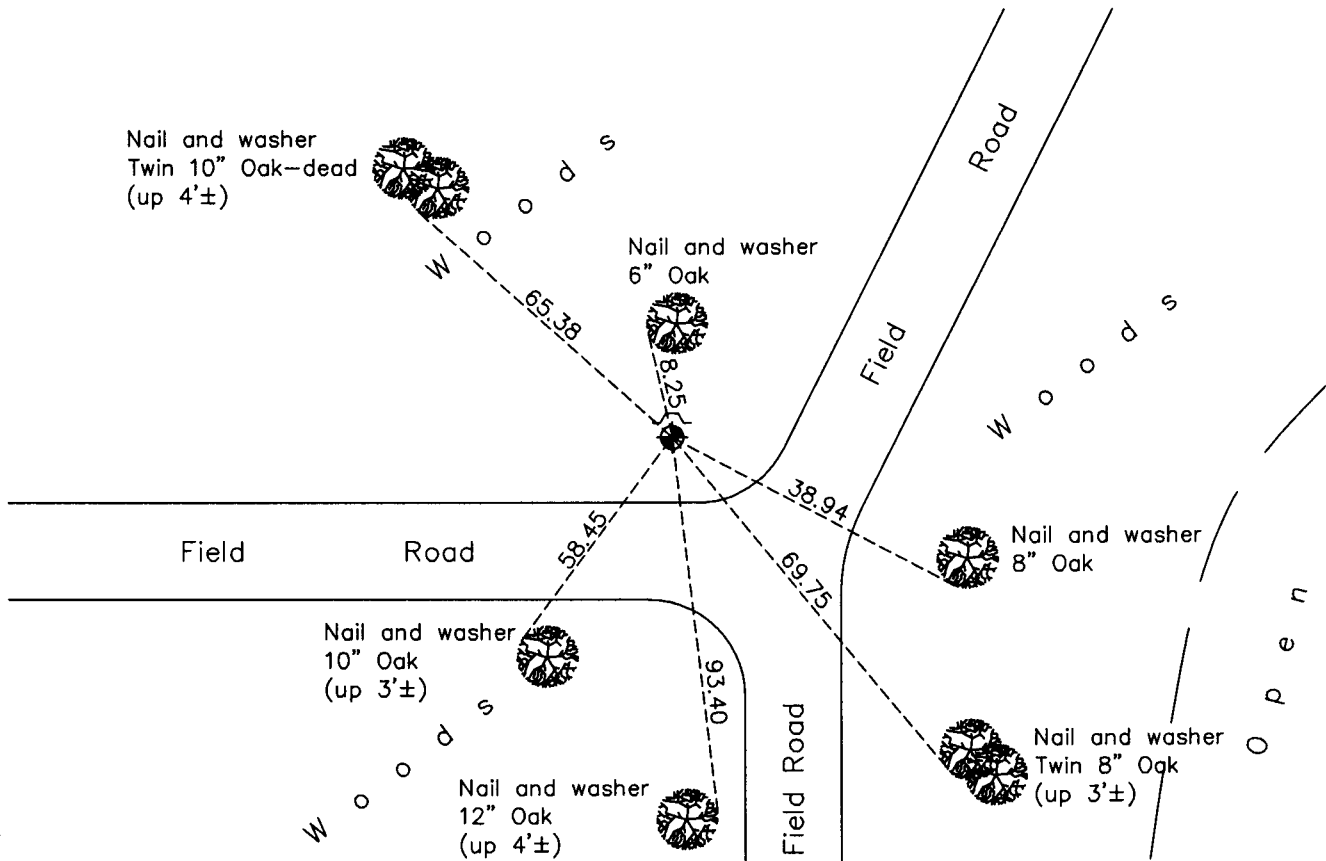
## Southwest Corner of Sec. 15 Township 32 Range 24

On the 9th day of August, 1960, the described corner was evidenced by a 1/2" iron pipe

and to perpetuate the location of said corner, at the exact location thereof, a permanent marker was placed consisting of a cast iron monument with a sign and post on the north side

AND on the 6th day of December, 2010, said permanent marker was found down 0.3'± and the ties were updated

Updated reference ties are as shown below.



Revision Date

5/02/11

N.A.D. 1983 Coordinates  
(1996 Adjustment)

County Project Coordinates	
Northing	180395.2078
Easting	484664.2440
Date	2/14/01

I hereby certify that this United States public land survey monument record is correct and complete to the best of my knowledge and belief.

*Larry D. Hoium* Date 5/02/11

Larry D. Hoium, Anoka County Surveyor

Minnesota License Number 18165