

CERTIFICATE OF LOCATION OF GOVERNMENT CORNER

County of Anoka

State of Minnesota

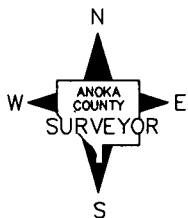
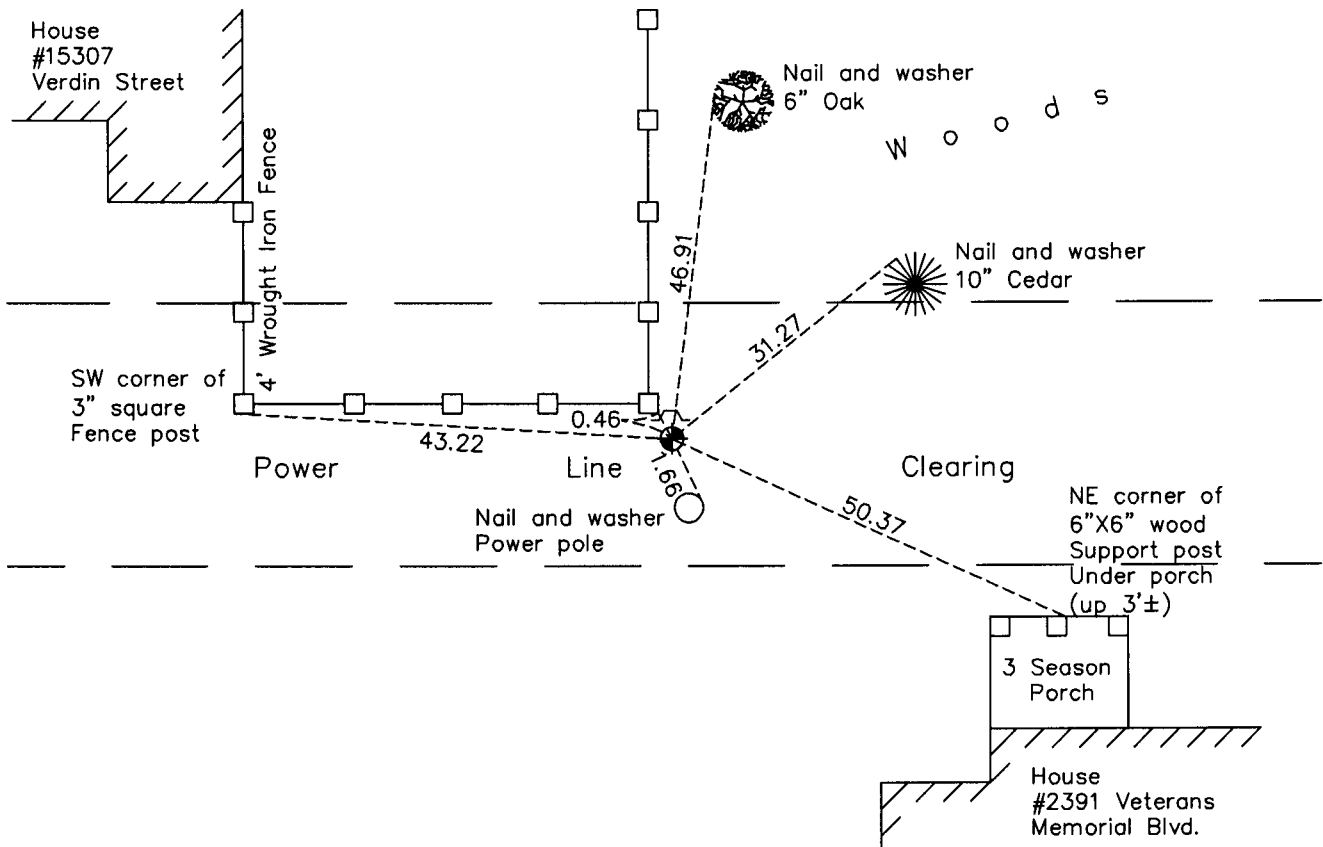
West 1/4 Corner of Sec. 22 Township 32 Range 24

On the 5th day of August, 1968, the described corner was evidenced by a 3" x 5" fieldstone and 3/4" iron pipe

and to perpetuate the location of said corner, at the exact location thereof, a permanent marker was placed consisting of a cast iron monument

AND on the 5th day of October, 2010, said permanent marker was found flush with the surface and the ties were updated. A sign and post was set on the north side of monument.

Updated reference ties are as shown below.



Revision Date
5/11/11

N.A.D. 1983 Coordinates
(1996 Adjustment)

County Project Coordinates	
Northing	<u>177751.1978</u>
Easting	<u>484652.5229</u>
Date	<u>2/06/01</u>

I hereby certify that this United States public land survey monument record is correct and complete to the best of my knowledge and belief.

Larry D. Hoium Date 5/11/11

Larry D. Hoium, Anoka County Surveyor

Minnesota License Number 18165