

CERTIFICATE OF LOCATION OF GOVERNMENT CORNER

County of Anoka

State of Minnesota

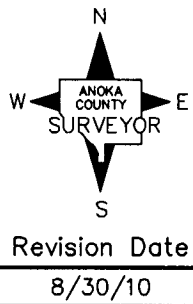
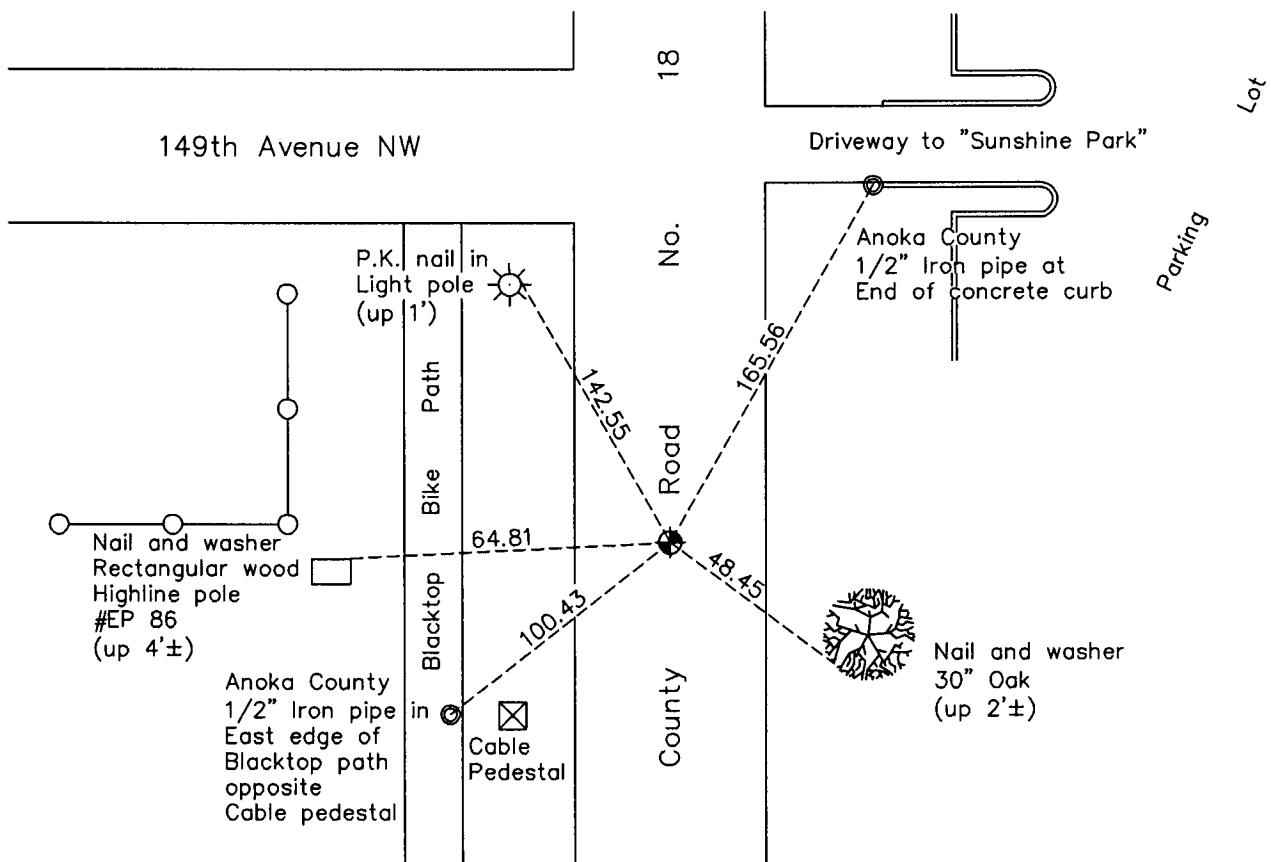
North $\frac{1}{4}$ Corner of Sec. 27 Township 32 Range 24

On the 11th day of June, 1959, the described corner was evidenced by a $\frac{1}{4}$ " solid iron rod

and to perpetuate the location of said corner, at the exact location thereof, a permanent marker was placed consisting of a cast iron monument

AND on the 15th day of July, 2010, said permanent marker was found, raised to surface after construction and the ties were updated

Updated reference ties are as shown below.



N.A.D. 1983 Coordinates
(1996 Adjustment)

| County Project Coordinates | |
|----------------------------|-------------|
| Northing | 175059.9222 |
| Easting | 487219.3196 |
| Date | 7/31/00 |

I hereby certify that this United States public land survey monument record is correct and complete to the best of my knowledge and belief.

Larry D. Hoium Date 8/30/10

Larry D. Hoium, Anoka County Surveyor

Minnesota License Number 18165