

CERTIFICATE OF LOCATION OF GOVERNMENT CORNER

County of Anoka

State of Minnesota

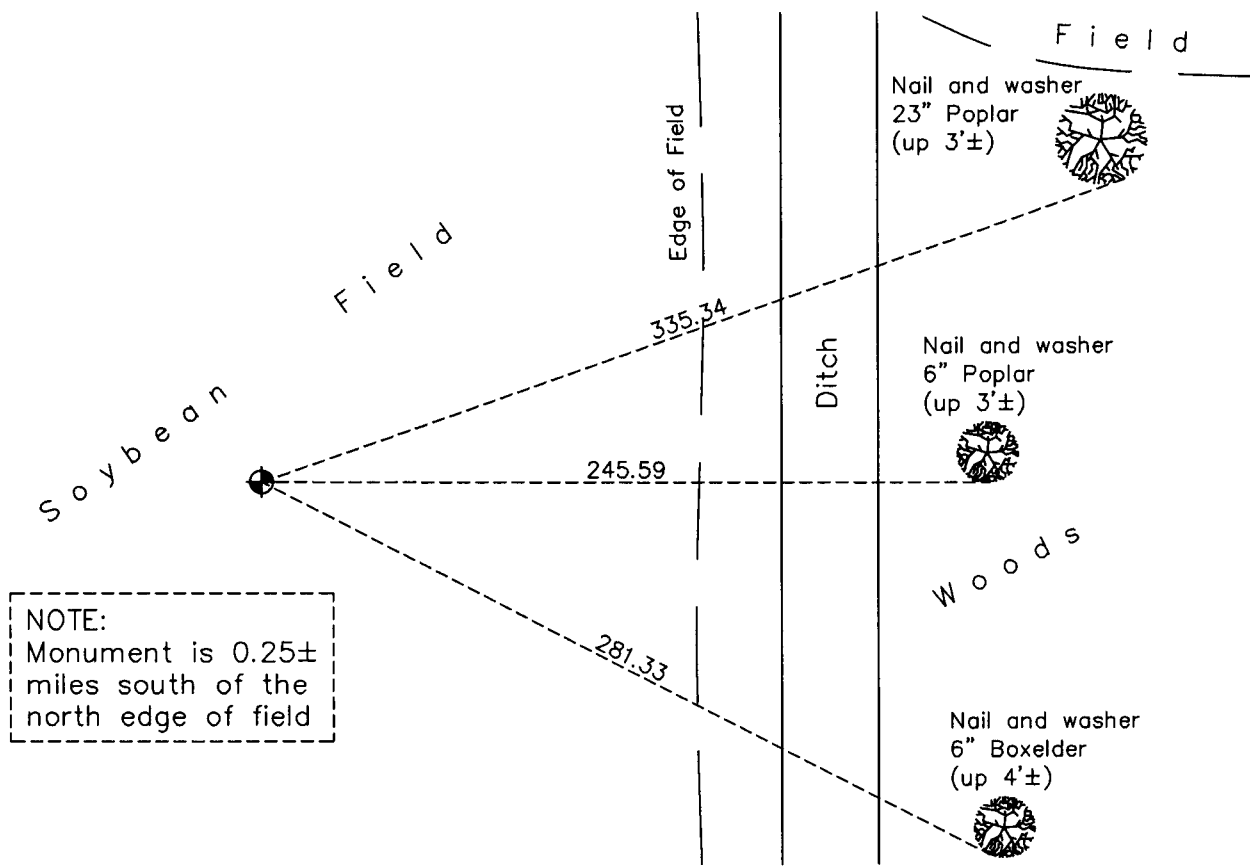
East 1/4 Corner of Sec. 29 Township 32 Range 24

On the 15th day of July, 1970, the described corner was evidenced by area resurvey

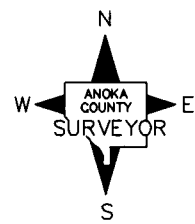
and to perpetuate the location of said corner, at the exact location thereof, a permanent marker was placed consisting of a cast iron monument down 2'±

AND on the 5th day of November, 2010, said permanent marker was found down 2'± and the ties were updated

Updated reference ties are as shown below.



NOTE:
Monument is 0.25± miles south of the north edge of field



Revision Date
5/25/11

N.A.D. 1983 Coordinates
(1996 Adjustment)

County Project Coordinates	
Northing	172436.5658
Easting	479292.0765
Date	N/A

I hereby certify that this United States public land survey monument record is correct and complete to the best of my knowledge and belief.

Larry D. Hoium Date 5/25/11

Larry D. Hoium, Anoka County Surveyor

Minnesota License Number 18165