

CERTIFICATE OF LOCATION OF GOVERNMENT CORNER

County of Anoka

State of Minnesota

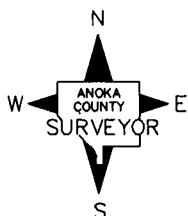
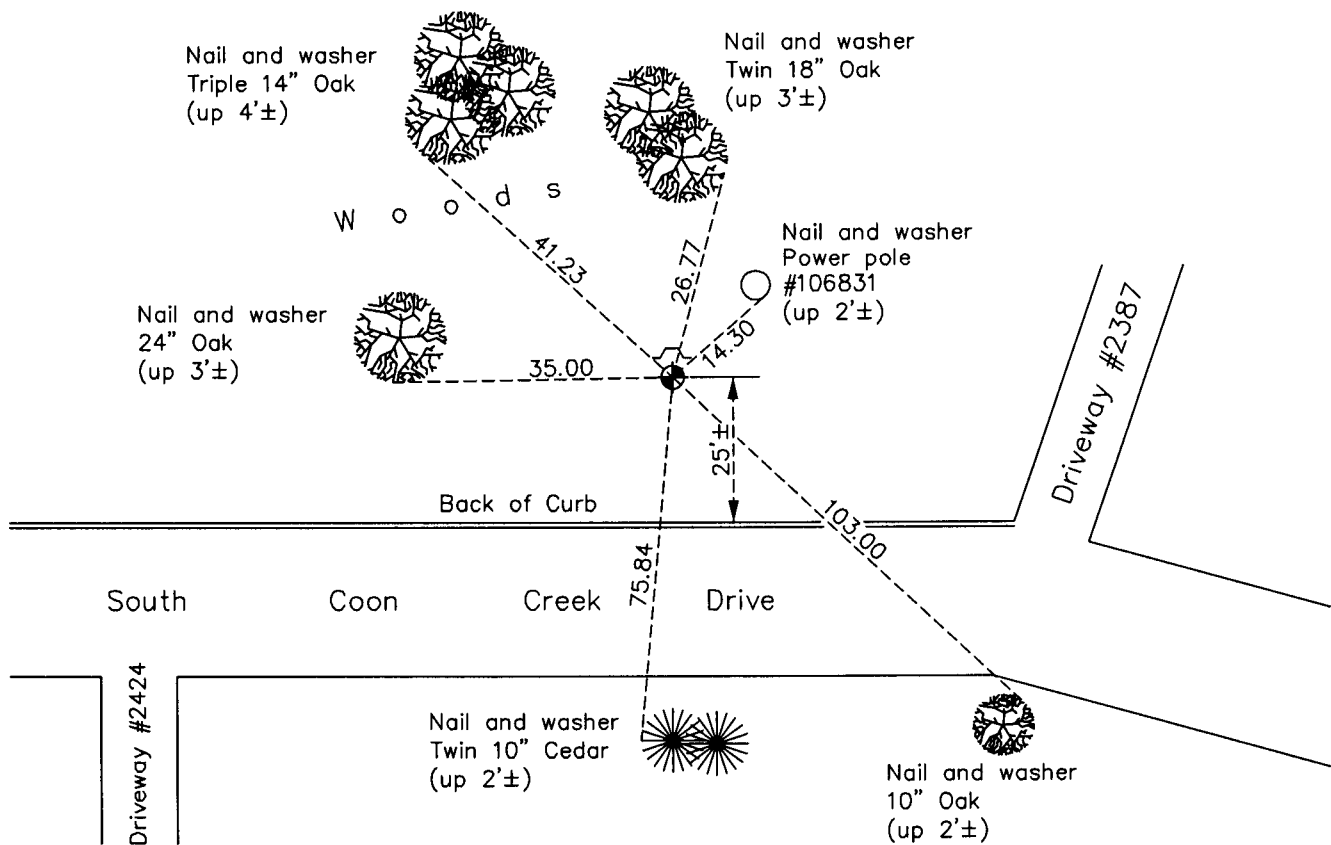
West 1/4 Corner of Sec. 27 Township 32 Range 24

On the 11th day of June, 1959, the described corner was evidenced by area resurvey

and to perpetuate the location of said corner, at the exact location thereof, a permanent marker was placed consisting of a cast iron monument

AND on the 3rd day of November, 2010, said permanent marker was found down 0.6'± and the ties were updated. A sign and post was set on the north side.

Updated reference ties are as shown below.



Revision Date

06/01/11

N.A.D. 1983 Coordinates
(1996 Adjustment)

County Project Coordinates	
Northing	172502.7433
Easting	484562.0913
Date	10/24/00

I hereby certify that this United States public land survey monument record is correct and complete to the best of my knowledge and belief.

Larry D. Hoium Date 6/01/11

Larry D. Hoium, Anoka County Surveyor

Minnesota License Number 18165