

CERTIFICATE OF LOCATION OF GOVERNMENT CORNER

County of Anoka

State of Minnesota

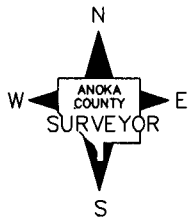
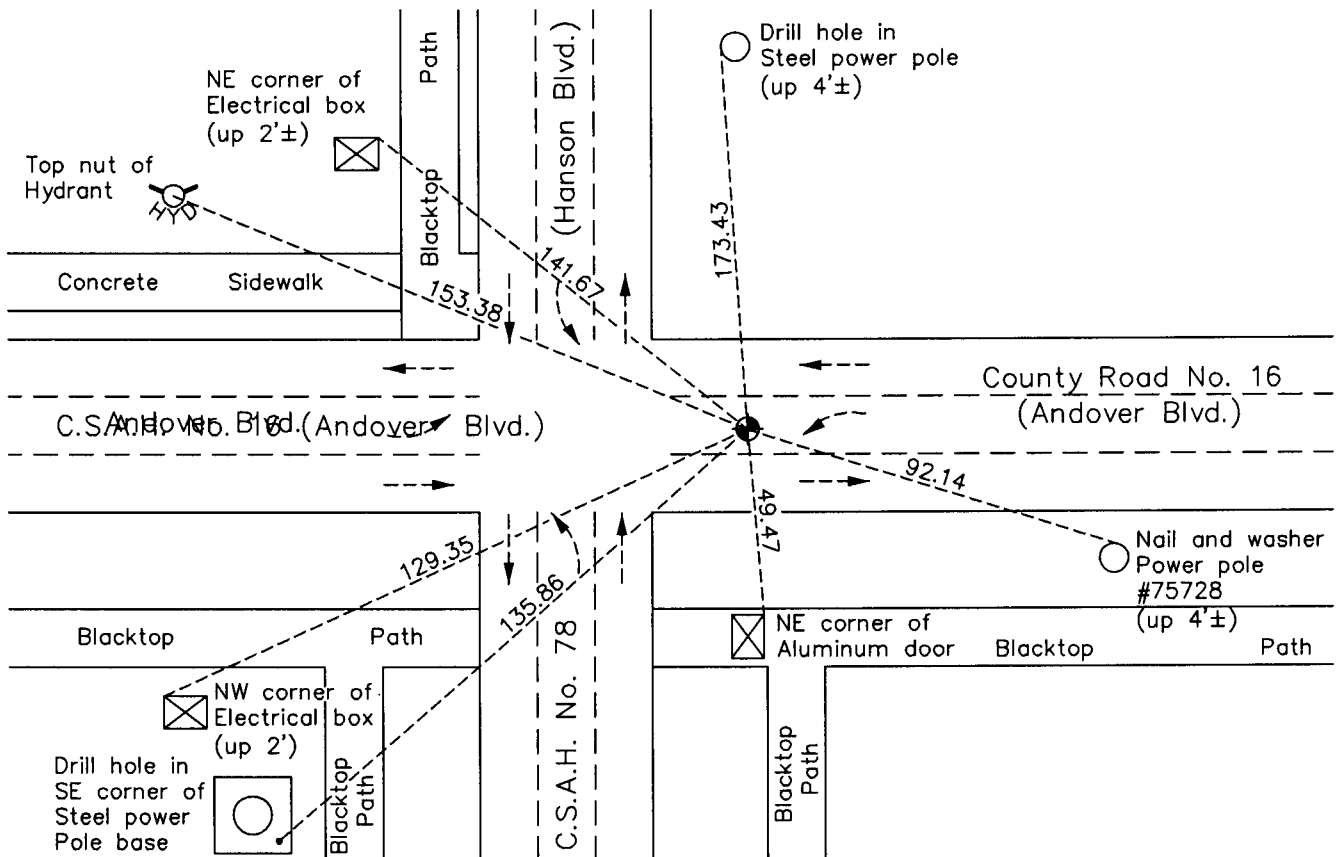
East 1/4 Corner of Sec. 27 Township 32 Range 24

On the 11th day of June, 1959, the described corner was evidenced by a 3/4" iron pipe

and to perpetuate the location of said corner, at the exact location thereof, a permanent marker was placed consisting of a cast iron monument

AND on the 20th day of October, 2010, said permanent marker was found down 0.1'± and the ties were updated

Updated reference ties are as shown below.



Revision Date
6/08/11

N.A.D. 1983 Coordinates
(1996 Adjustment)

County Project Coordinates	
Northing	<u>172361.4691</u>
Easting	<u>489826.0775</u>
Date	<u>6/30/00</u>

I hereby certify that this United States public land survey monument record is correct and complete to the best of my knowledge and belief.

Larry D. Hoium Date 6/08/11

Larry D. Hoium, Anoka County Surveyor

Minnesota License Number 18165