

CERTIFICATE OF LOCATION OF GOVERNMENT CORNER

County of Anoka

State of Minnesota

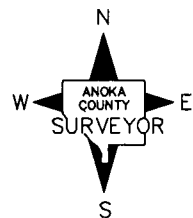
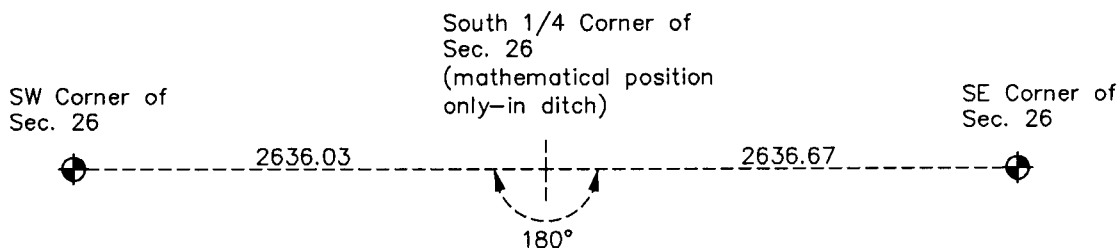
South 1/4 Corner of Sec. 26 Township 32 Range 24

On the 19th day of January, 1978, the described corner was evidenced by area resurvey

and to perpetuate the location of said corner, at the exact location thereof, a permanent marker was placed consisting of a mathematical position. The corner could not be set because the position falls in a ditch.

AND on the ___ day of _____, _____, said permanent marker was _____

Updated reference ties are as shown below.



Revision Date

6/13/11

N.A.D. 1983 Coordinates
(1996 Adjustment)

County Project Coordinates	
Northing	<u>N/A</u>
Easting	_____
Date	_____

I hereby certify that this United States public land survey monument record is correct and complete to the best of my knowledge and belief.

Larry D. Hoium Date 6/13/11

Larry D. Hoium, Anoka County Surveyor

Minnesota License Number 18165