

# CERTIFICATE OF LOCATION OF GOVERNMENT CORNER

County of Anoka

State of Minnesota

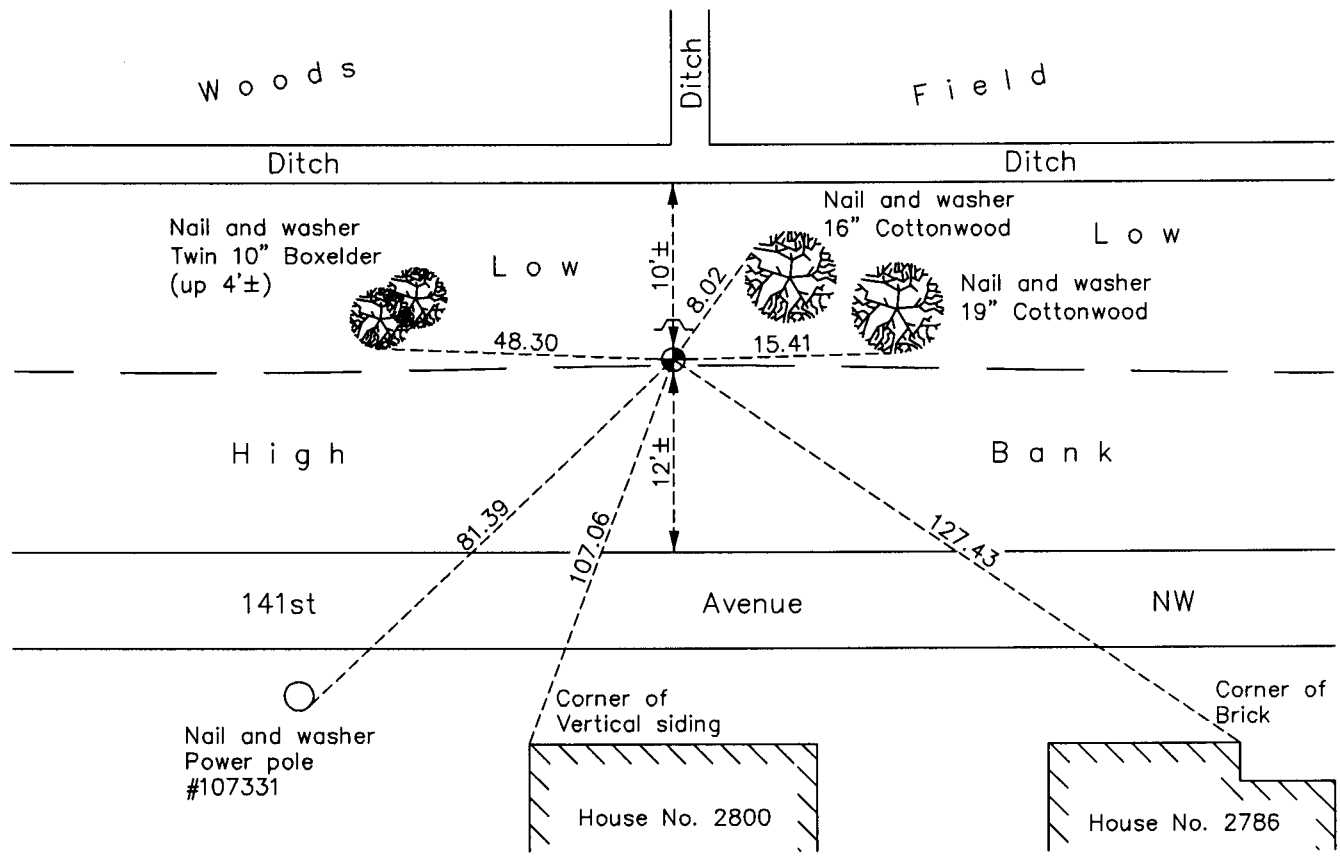
## South 1/4 Corner of Sec. 28 Township 32 Range 24

On the 8th day of August, 1960, the described corner was evidenced by a concrete monument

and to perpetuate the location of said corner, at the exact location thereof, a permanent marker was placed consisting of a cast iron monument with a sign and post on the north side

AND on the \_\_\_ day of October, 2010, said permanent marker was found down 1.0'± and the ties were updated

Updated reference ties are as shown below.



N  
  
 ANOKA COUNTY SURVEYOR  
 S  
 Revision Date  
 6/14/11

N.A.D. 1983 Coordinates  
(1996 Adjustment)

County Project Coordinates	
Northing	169829.6040
Easting	481889.3854
Date	11/16/00

I hereby certify that this United States public land survey monument record is correct and complete to the best of my knowledge and belief.

*Larry D. Hoium* Date 6/14/11

Larry D. Hoium, Anoka County Surveyor  
 Minnesota License Number 18165