

# CERTIFICATE OF LOCATION OF GOVERNMENT CORNER

County of Anoka

State of Minnesota

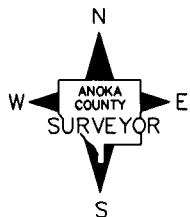
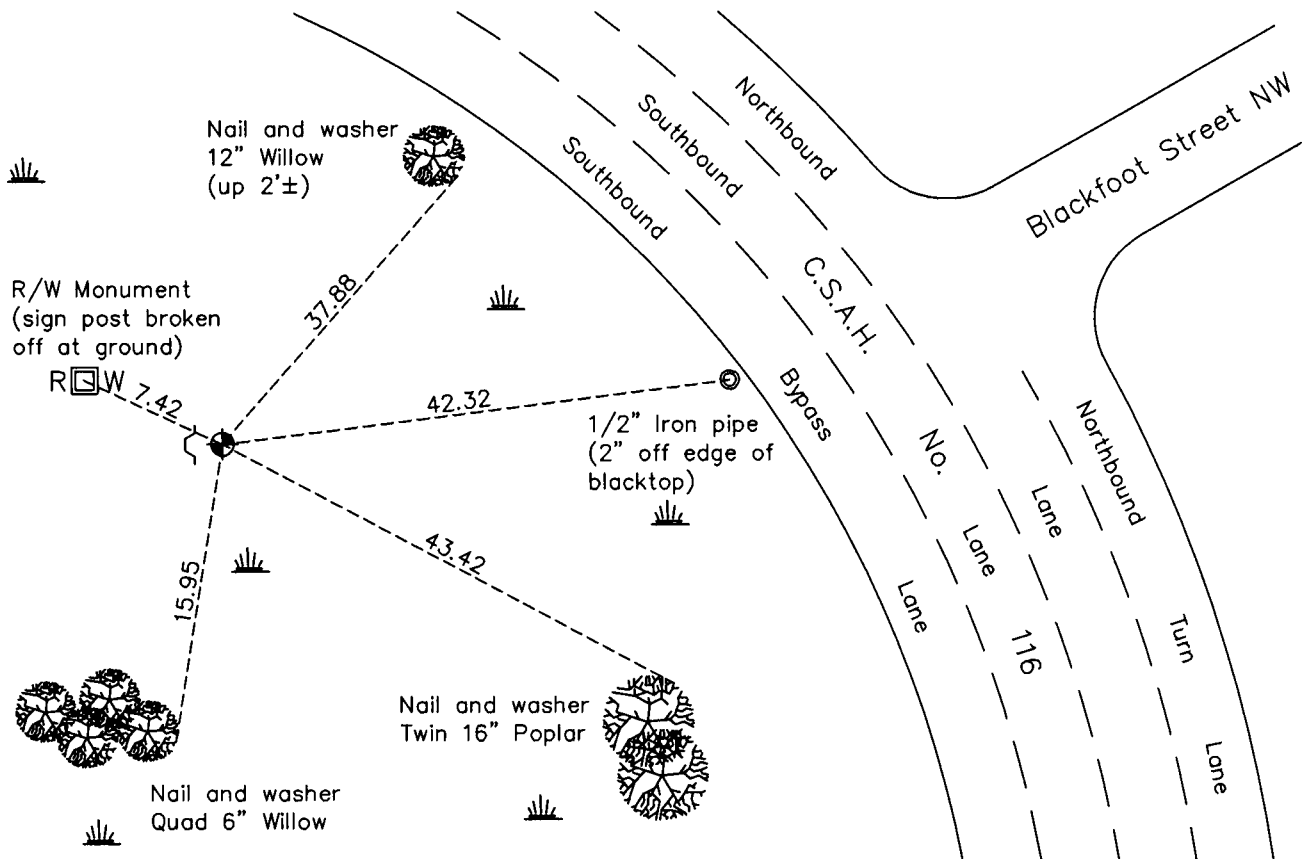
## Northeast Corner of Sec. 31 Township 32 Range 24

On the 12th day of January, 1973, the described corner was evidenced by area resurvey

and to perpetuate the location of said corner, at the exact location thereof, a permanent marker was placed consisting of a cast iron monument with a sign and post on the west side

AND on the     day of December, 2010, said permanent marker was found up 0.1'± and the ties were updated

Updated reference ties are as shown below.



Revision Date

6/21/11

N.A.D. 1983 Coordinates  
(1996 Adjustment)

County Project Coordinates	
Northing	169887.6719
Easting	474002.7794
Date	11/27/00

I hereby certify that this United States public land survey monument record is correct and complete to the best of my knowledge and belief.

*Larry D. Hoium* Date 6/21/11

Larry D. Hoium, Anoka County Surveyor

Minnesota License Number 18165