

CERTIFICATE OF LOCATION OF GOVERNMENT CORNER

County of Anoka

State of Minnesota

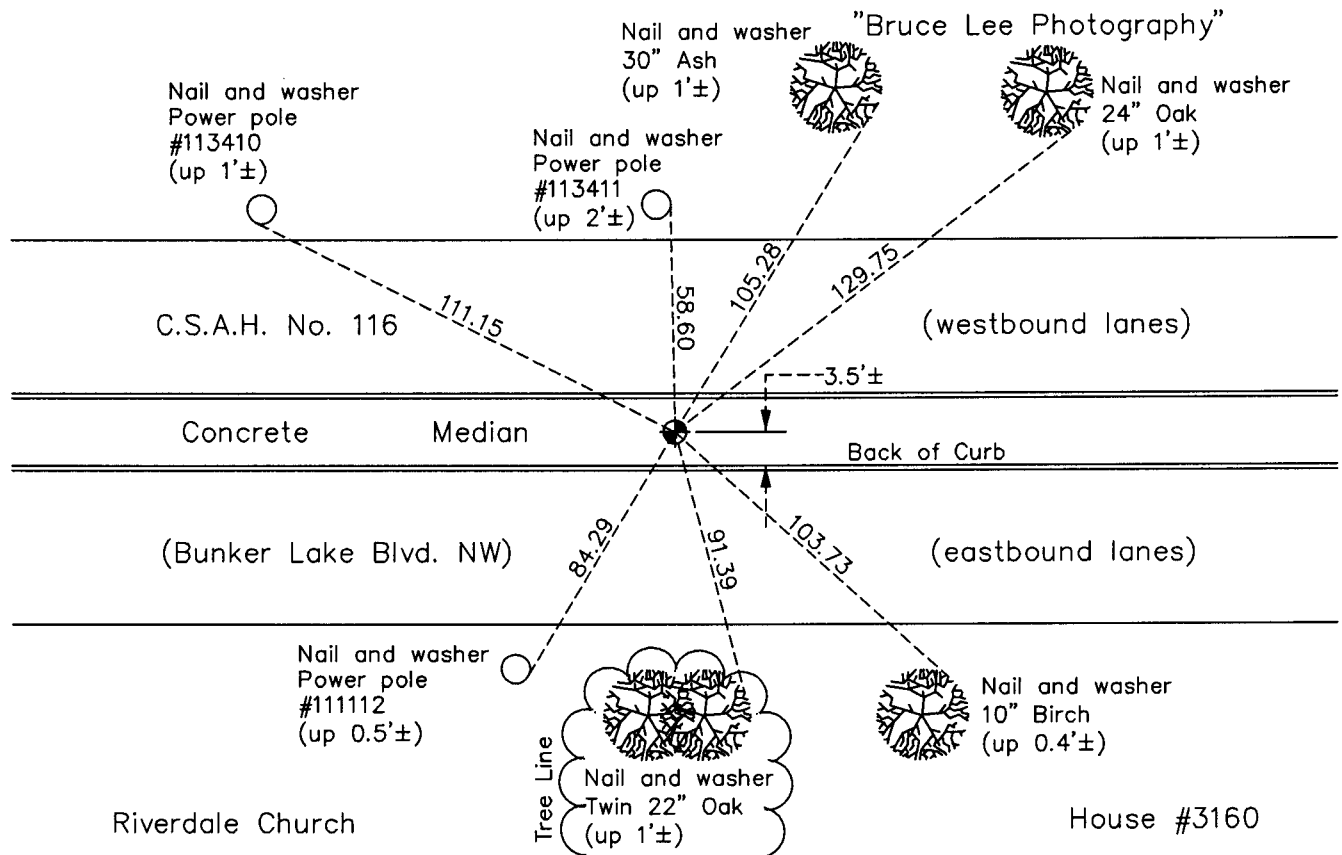
East 1/4 Corner of Sec. 32 Township 32 Range 24

On the 16th day of May, 1956, the described corner was evidenced by a granite monument

and to perpetuate the location of said corner, at the exact location thereof, a permanent marker was placed consisting of a cast iron monument

AND on the 11th day of October, 2010, said permanent marker was found flush with the surface and the ties were updated

Updated reference ties are as shown below.



Revision Date

6/22/11

N.A.D. 1983 Coordinates
(1996 Adjustment)

County Project Coordinates	
Northing	167184.9157
Easting	479222.8442
Date	7/19/00

I hereby certify that this United States public land survey monument record is correct and complete to the best of my knowledge and belief.

Date 6/22/11

Larry D. Hoium, Anoka County Surveyor
 Minnesota License Number 18165