

CERTIFICATE OF LOCATION OF GOVERNMENT CORNER

County of Anoka

State of Minnesota

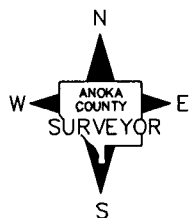
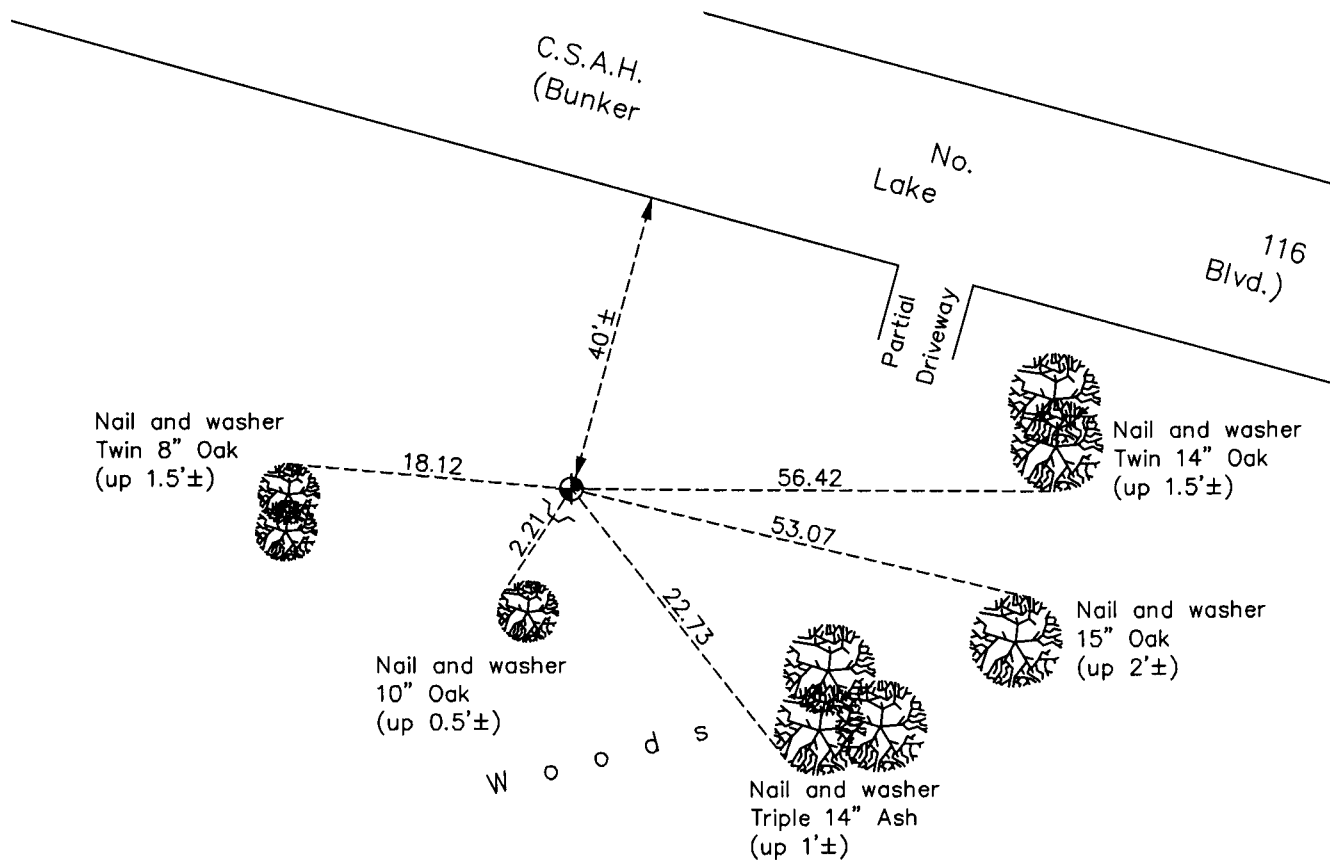
East 1/4 Corner of Sec. 36 Township 32 Range 24

On the 14th day of September, 1960, the described corner was evidenced by a Tee iron

and to perpetuate the location of said corner, at the exact location thereof, a permanent marker was placed consisting of a cast iron monument with a sign and post on the southwest side

AND on the 7th day of October, 2010, said permanent marker was found flush with the surface and the ties were updated

Updated reference ties are as shown below.



Revision Date

7/14/11

N.A.D. 1983 Coordinates
(1996 Adjustment)

County Project Coordinates	
Northing	166943.3017
Easting	500245.8501
Date	11/29/00

I hereby certify that this United States public land survey monument record is correct and complete to the best of my knowledge and belief.

Larry D. Hoium Date 7/14/11

Larry D. Hoium, Anoka County Surveyor
Minnesota License Number 18165