

# CERTIFICATE OF LOCATION OF GOVERNMENT CORNER

County of Anoka

State of Minnesota

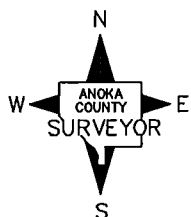
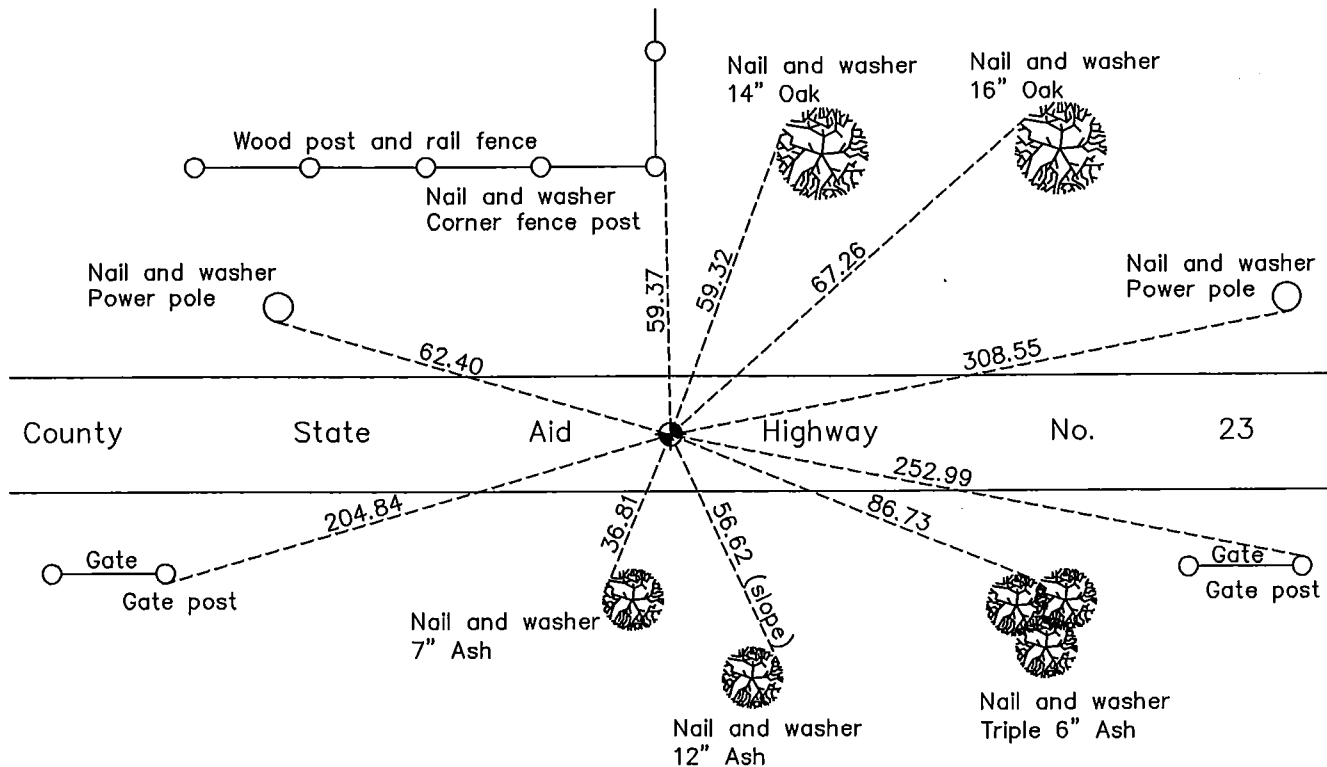
## Southwest Corner of Sec. 14 Township 32 Range 22

On the 17th day of November, 1964, the described corner was evidenced by area resurvey

and to perpetuate the location of said corner, at the exact location thereof, a permanent marker was placed consisting of a 1/2" iron pipe

AND on the 16th day of November, 2011, said permanent marker was found to have been replaced with a cast iron monument

Updated reference ties are as shown below.



Revision Date  
11/29/11

N.A.D. 1983 Coordinates  
(1996 Adjustment)

County Project Coordinates	
Northing	179932.0440
Easting	553240.4957
Date	6/17/03

I hereby certify that this United States public land survey monument record is correct and complete to the best of my knowledge and belief.

*Larry D. Hoium* Date 11/29/11

Larry D. Hoium, Anoka County Surveyor

Minnesota License Number 18165