

CERTIFICATE OF LOCATION OF GOVERNMENT CORNER

County of Anoka

State of Minnesota

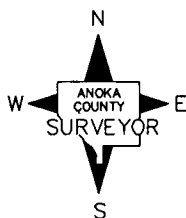
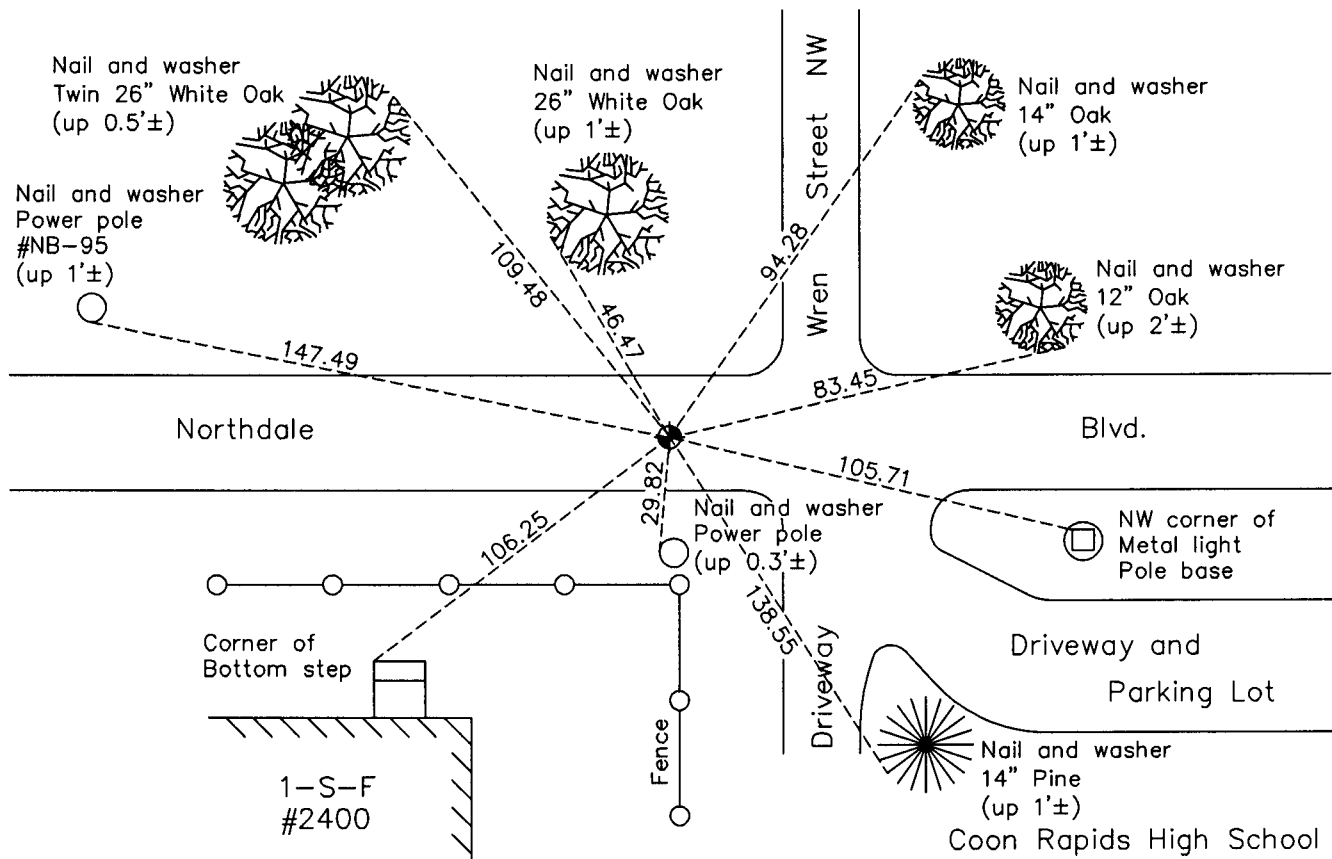
Northwest Corner of Sec. 15 Township 31 Range 24

On the 19th day of July, 1960, the described corner was evidenced by a concrete monument

and to perpetuate the location of said corner, at the exact location thereof, a permanent marker was placed consisting of a cast iron monument set flush on top of broken off concrete monument

AND on the 15th day of July, 2010, said permanent marker was found, raised to the surface after construction and the ties were updated

Updated reference ties are as shown below.



Revision Date

7/19/11

N.A.D. 1983 Coordinates
(1996 Adjustment)

County Project Coordinates	
Northing	153888.5586
Easting	484280.1507
Date	8/23/01

I hereby certify that this United States public land survey monument record is correct and complete to the best of my knowledge and belief.

Date 7/19/11
 Larry D. Hoium, Anoka County Surveyor
 Minnesota License Number 18165