

CERTIFICATE OF LOCATION OF GOVERNMENT CORNER

County of Anoka

State of Minnesota

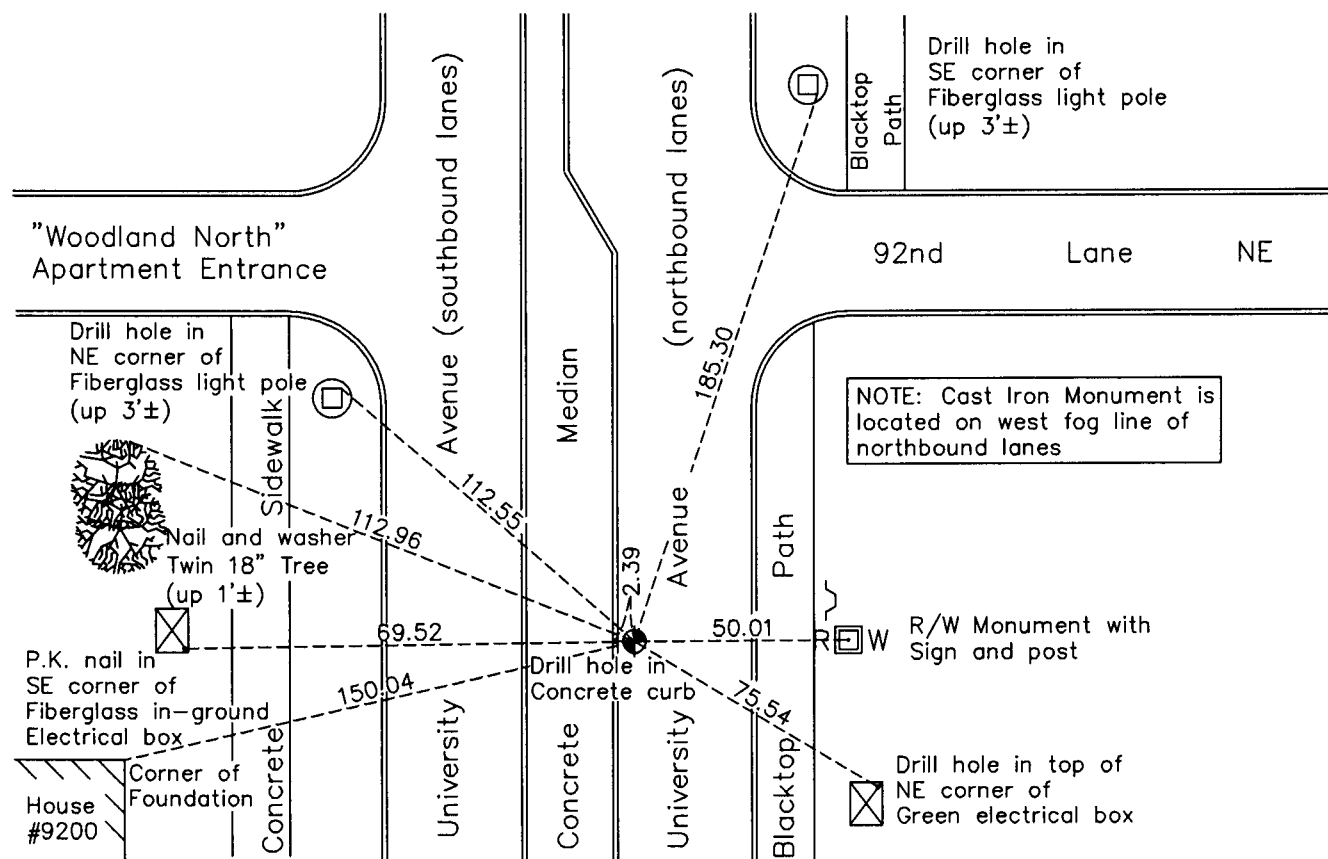
Southeast Corner of Sec. 25 Township 31 Range 24

On the 4th day of August, 1960, the described corner was evidenced by a concrete monument

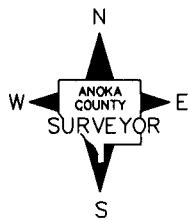
and to perpetuate the location of said corner, at the exact location thereof, a permanent marker was placed consisting of a cast iron monument

AND on the 12th day of April, 2011, said permanent marker was replaced with a cast iron monument after road construction was complete and the ties were updated.

Updated reference ties are as shown below.



NOTE: Cast Iron Monument is located on west fog line of northbound lanes



Revision Date
7/19/11

N.A.D. 1983 Coordinates
(1996 Adjustment)

County Project Coordinates	
Northing	137828.9304
Easting	499972.0145
Date	12/15/98

I hereby certify that this United States public land survey monument record is correct and complete to the best of my knowledge and belief.

Larry D. Hoium Date 7/19/11

Larry D. Hoium, Anoka County Surveyor
Minnesota License Number 18165