

# CERTIFICATE OF LOCATION OF GOVERNMENT CORNER

County of Anoka

State of Minnesota

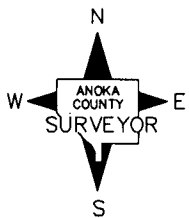
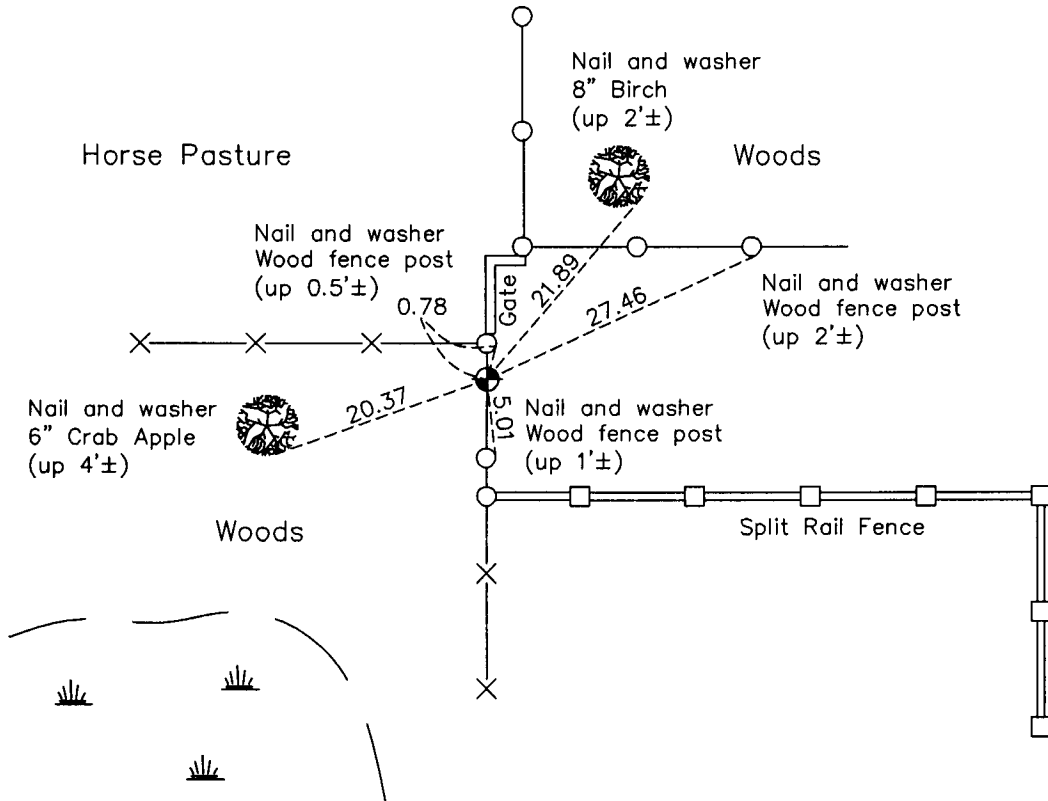
## Northwest Corner of Sec. 3 Township 32 Range 23

On the 20th day of December, 1960, the described corner was evidenced by a wellpoint

and to perpetuate the location of said corner, at the exact location thereof, a permanent marker was placed consisting of a cast iron monument

AND on the 25th day of March, 2011, said permanent marker was found and the ties  
were updated

Updated reference ties are as shown below.



Revision Date  
8/11/11

N.A.D. 1983 Coordinates  
(1996 Adjustment)

County Project Coordinates	
Northing	<u>195715.0443</u>
Easting	<u>516226.9935</u>
Date	<u>8/22/96</u>

I hereby certify that this United States public land survey monument record is correct and complete to the best of my knowledge and belief.

*Larry D. Hoium* Date 8/11/11

\_\_\_\_\_  
Larry D. Hoium, Anoka County Surveyor

Minnesota License Number 18165