

# CERTIFICATE OF LOCATION OF GOVERNMENT CORNER

County of Anoka

State of Minnesota

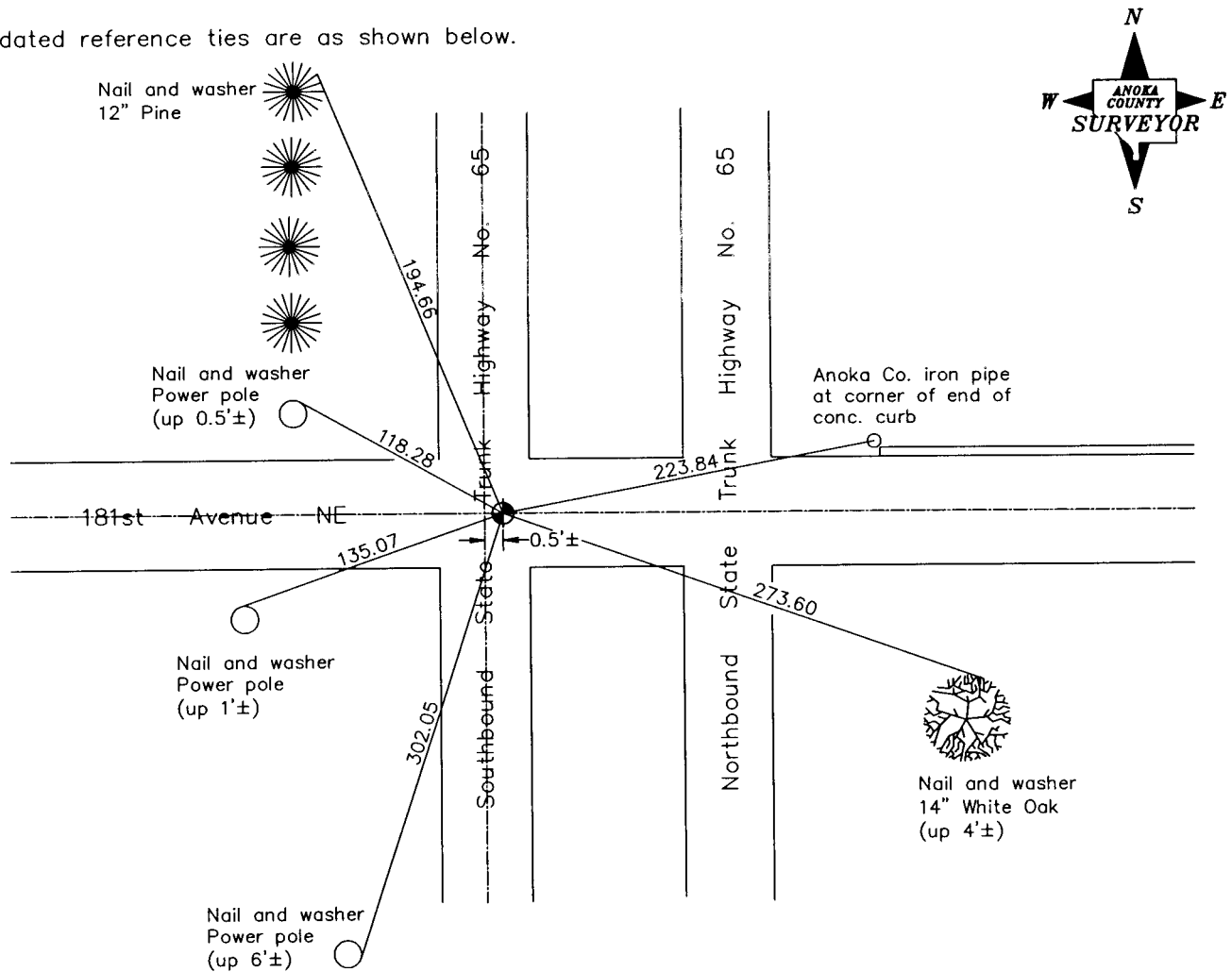
North 1/4 Corner of Sec. 5 Township 32 Range 23

On the 4th day of September, 1969, the described corner was evidenced by a granite monument

and to perpetuate the location of said corner, at the exact location thereof, a permanent marker was placed consisting of a cast iron monument

AND on the 15th day of September, 2006, said permanent marker was found broken and replaced with a cast iron monument

Updated reference ties are as shown below.



Revised date
10/24/90
12/31/90
Reset 9/15/06

N.A.D. 1983 Coordinates (1996 Adjustment)	
County Project Coordinates	
Northing	195810.0084
Easting	508332.8863
Date	9/15/06

I hereby certify that this United States public land survey monument record is correct and complete to the best of my knowledge and belief.

*Larry D. Hoium* Date 6/26/07

Larry D. Hoium, Anoka County Surveyor

Minnesota License Number 18165